



PARK AT PINEMONT

A new community in the Oak Forest/Garden Oaks Area

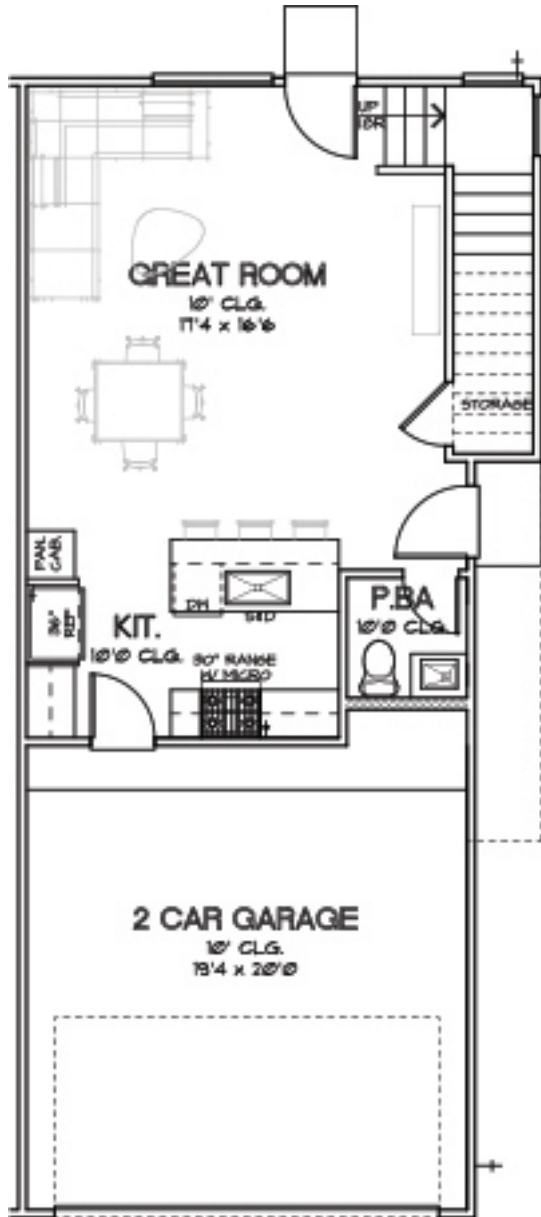


To learn more about this community, please contact:

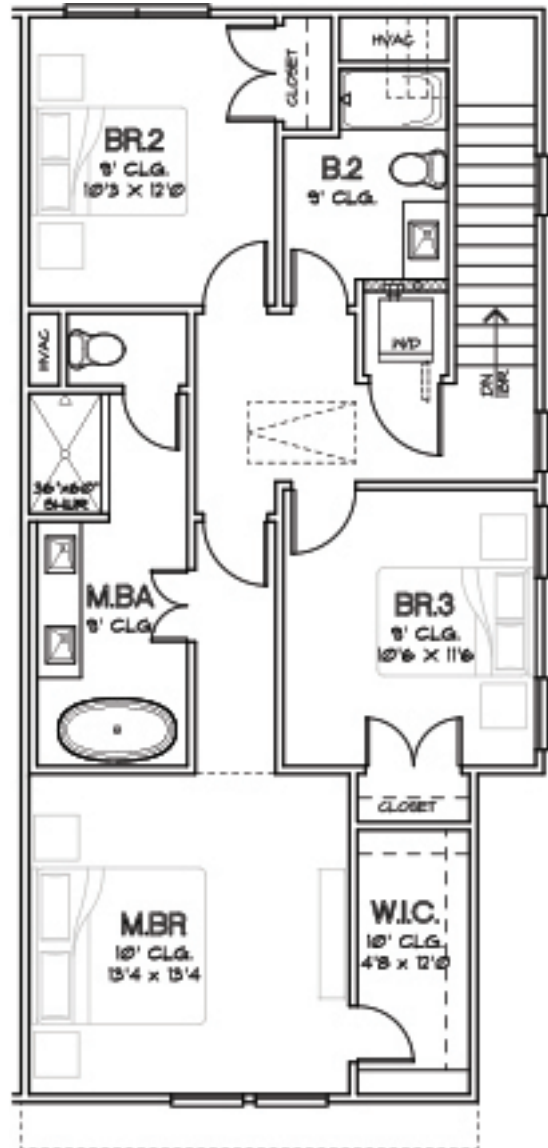
Michael Afshari | 832.875.3252
michael.afshari@compass.com

CHOICE IS THE ULTIMATE LUXURY



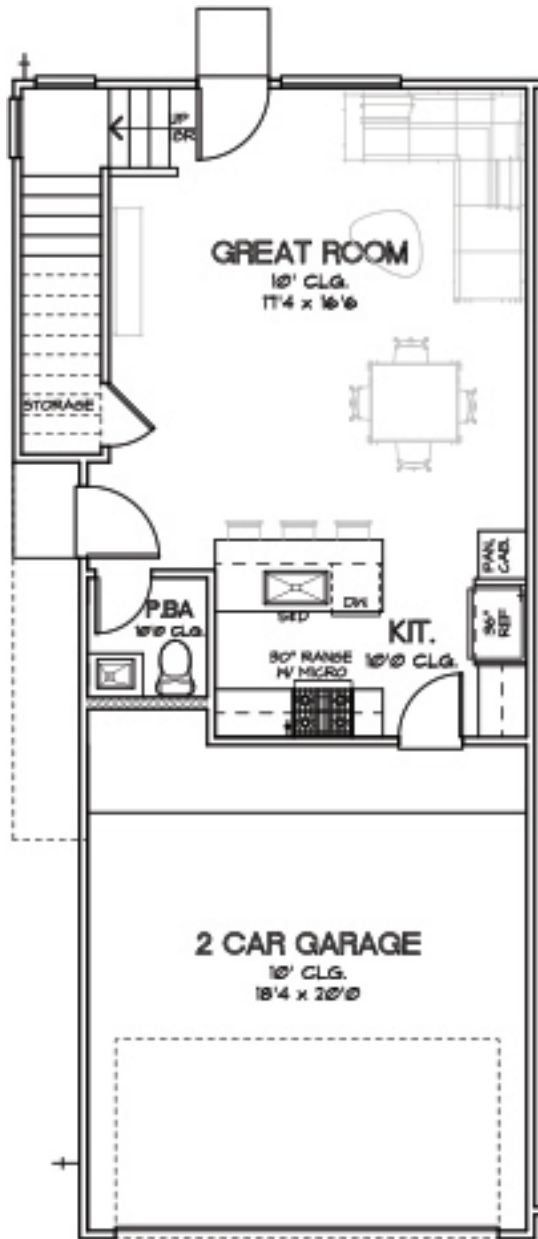


FIRST FLOOR

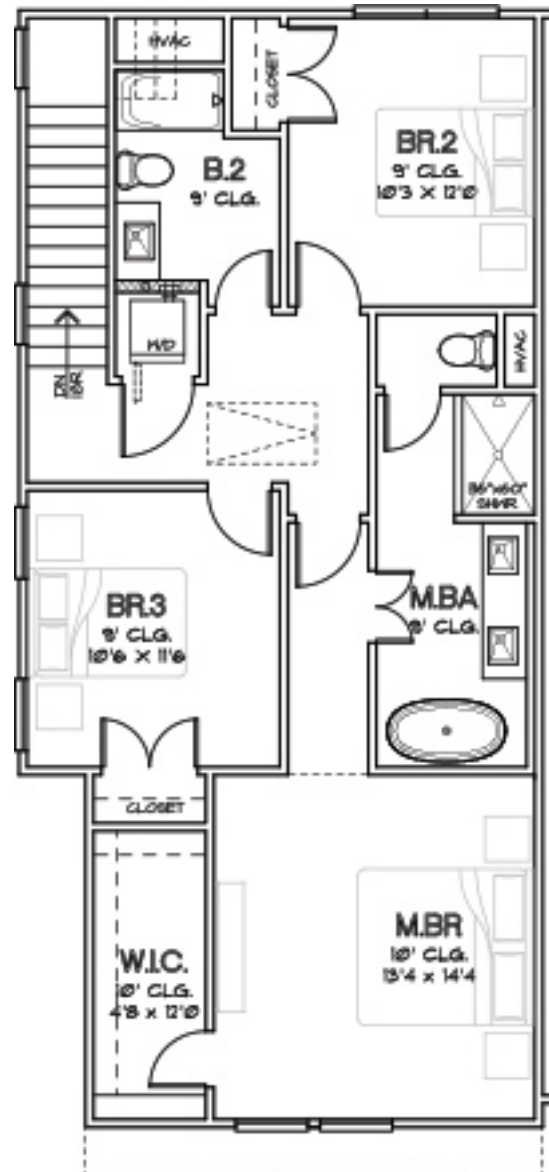


SECOND FLOOR

CHOICE IS THE ULTIMATE LUXURY

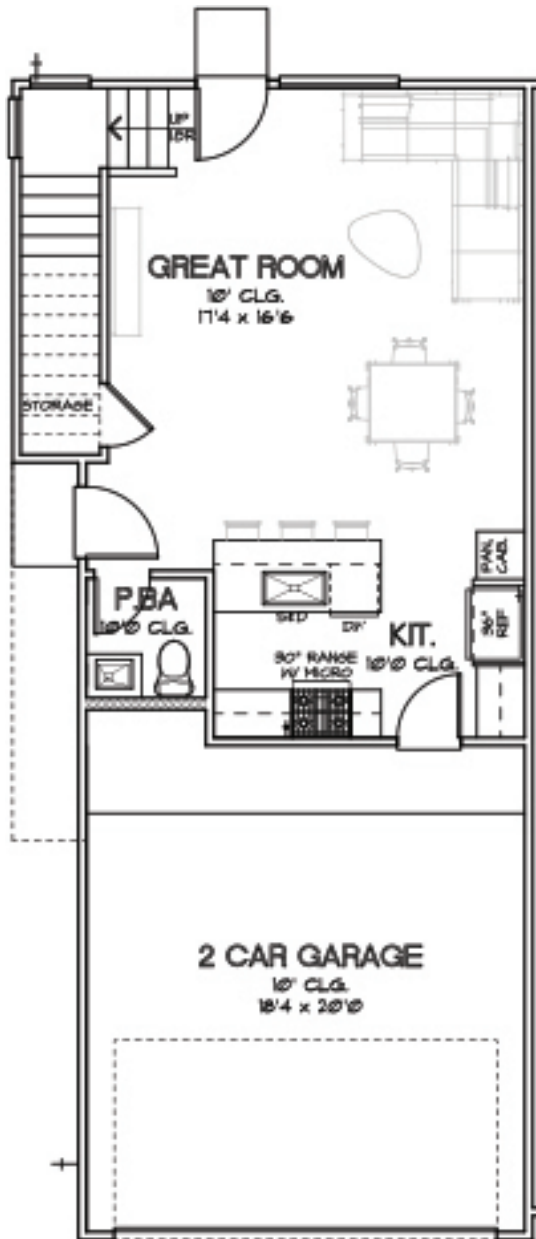


FIRST FLOOR

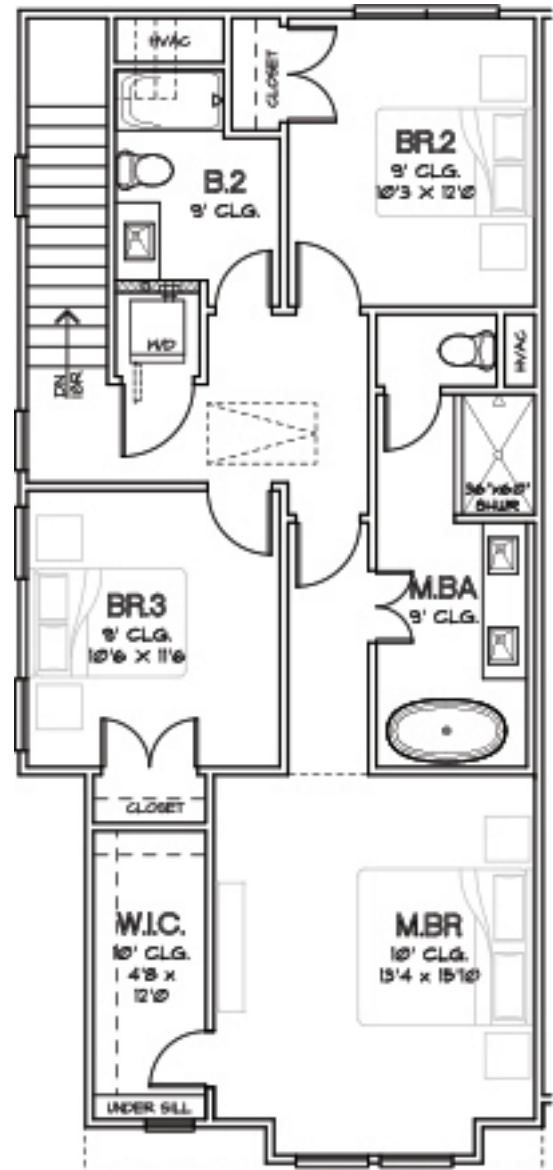


SECOND FLOOR

CHOICE IS THE ULTIMATE LUXURY

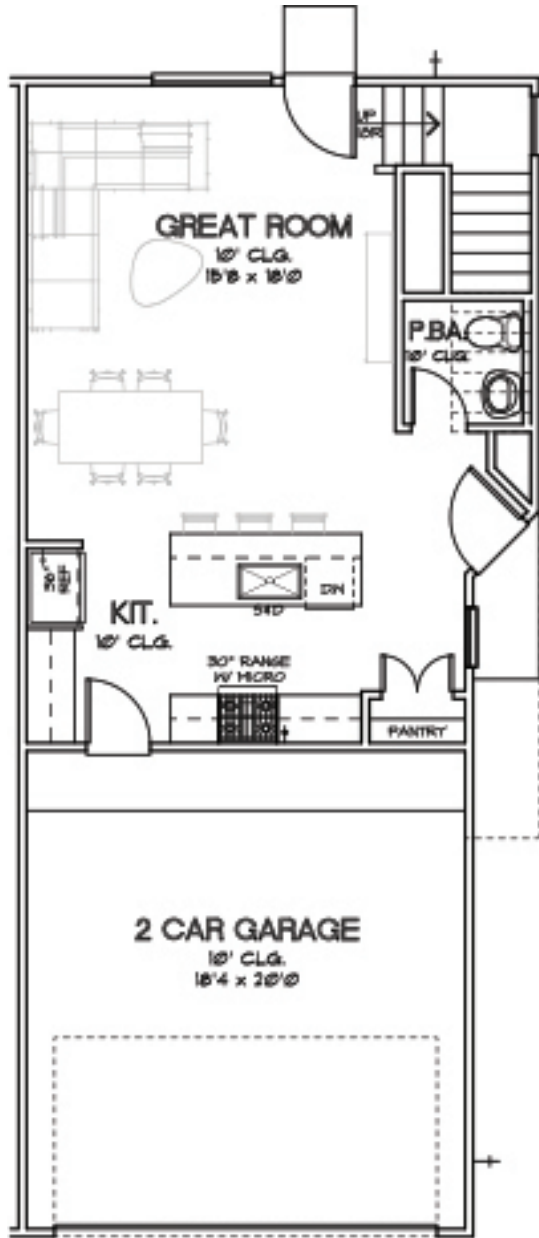


FIRST FLOOR

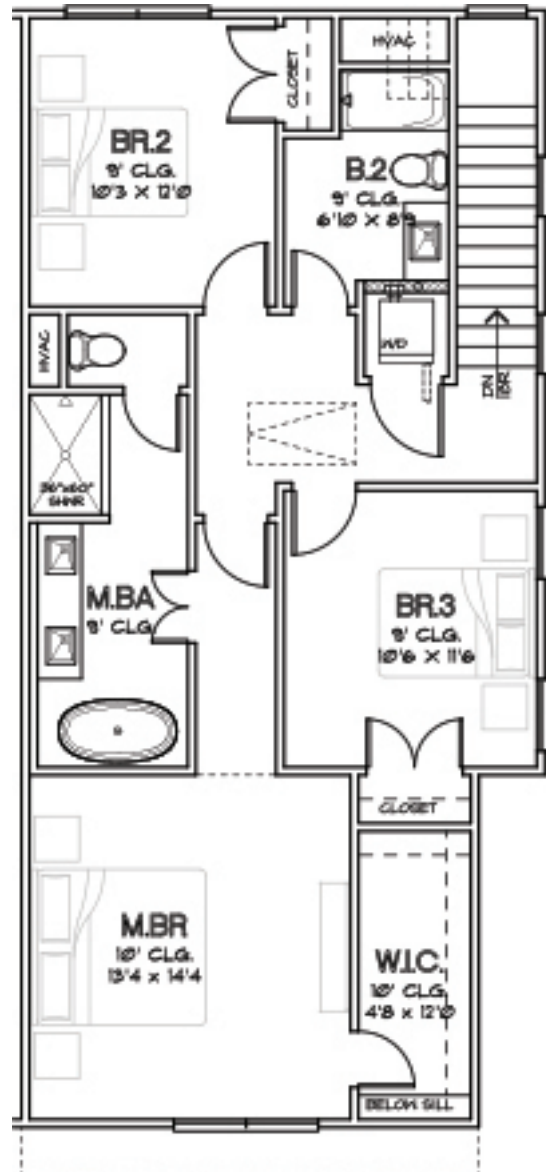


SECOND FLOOR

CHOICE IS THE ULTIMATE LUXURY

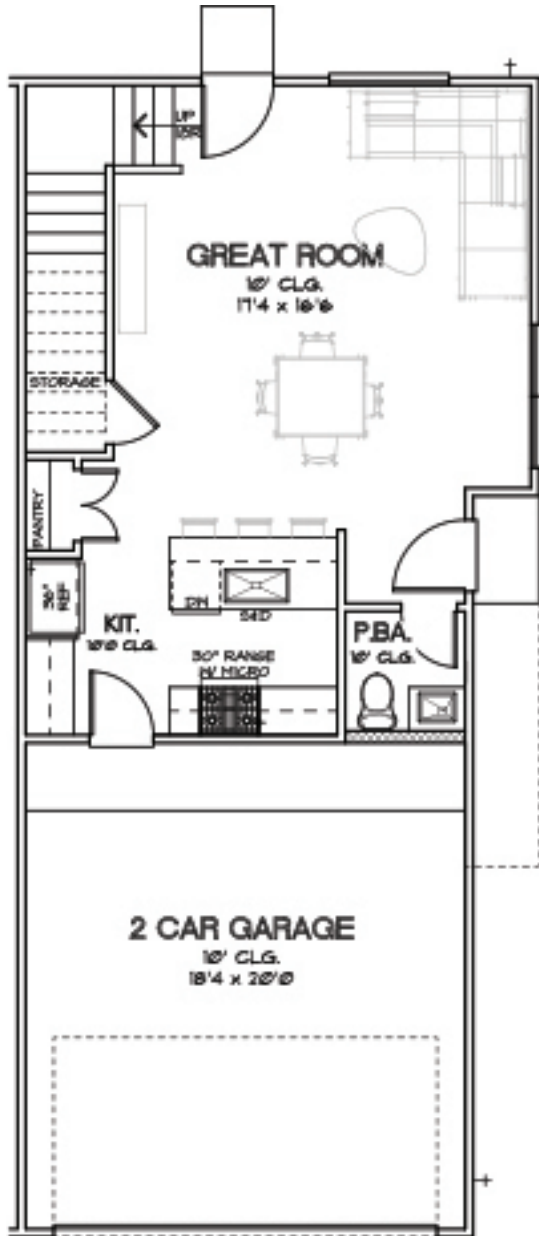


FIRST FLOOR



SECOND FLOOR

CHOICE IS THE ULTIMATE LUXURY



FIRST FLOOR



SECOND FLOOR

CHOICE IS THE ULTIMATE LUXURY



UP 10R

P.B.A.

GREAT ROOM
10' CLG.
15'0" x 10'0"

DIN

30" RANGE
MICRO

PANTRY

KIT.
10' CLG.

2 CAR GARAGE
10' CLG.
18'4" x 20'0"

The second floor plan includes the following rooms and features:

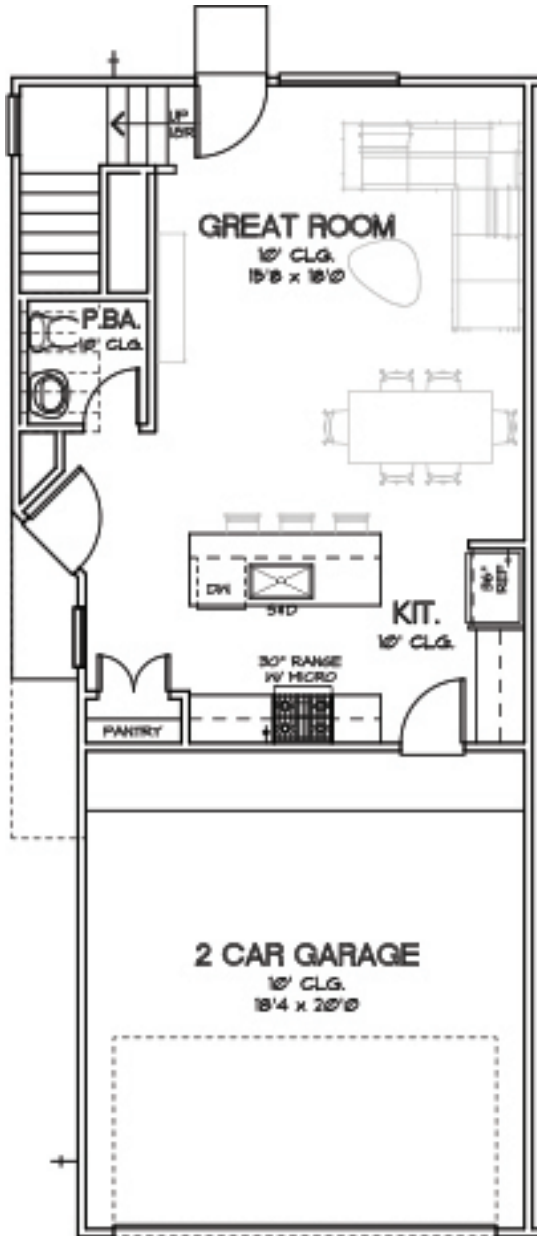
- BR.2**: 9' CLG., 10'3" x 12'0"
- B.2**: 9' CLG., 6'10" x 8'9"
- BR.3**: 9' CLG., 10'6" x 11'6"
- MBA**: 9' CLG.
- M.BR**: 10' CLG., 13'4" x 14'4"
- W.I.C.**: 10' CLG., 4'8" x 12'0"
- CL.2**: 10' x 10' (dashed line)
- CL.3**: 10' x 10' (dashed line)
- CL.4**: 10' x 10' (dashed line)
- CL.5**: 10' x 10' (dashed line)
- CL.6**: 10' x 10' (dashed line)
- CL.7**: 10' x 10' (dashed line)
- CL.8**: 10' x 10' (dashed line)
- CL.9**: 10' x 10' (dashed line)
- CL.10**: 10' x 10' (dashed line)
- CL.11**: 10' x 10' (dashed line)
- CL.12**: 10' x 10' (dashed line)
- CL.13**: 10' x 10' (dashed line)
- CL.14**: 10' x 10' (dashed line)
- CL.15**: 10' x 10' (dashed line)
- CL.16**: 10' x 10' (dashed line)
- CL.17**: 10' x 10' (dashed line)
- CL.18**: 10' x 10' (dashed line)
- CL.19**: 10' x 10' (dashed line)
- CL.20**: 10' x 10' (dashed line)
- CL.21**: 10' x 10' (dashed line)
- CL.22**: 10' x 10' (dashed line)
- CL.23**: 10' x 10' (dashed line)
- CL.24**: 10' x 10' (dashed line)
- CL.25**: 10' x 10' (dashed line)
- CL.26**: 10' x 10' (dashed line)
- CL.27**: 10' x 10' (dashed line)
- CL.28**: 10' x 10' (dashed line)
- CL.29**: 10' x 10' (dashed line)
- CL.30**: 10' x 10' (dashed line)
- CL.31**: 10' x 10' (dashed line)
- CL.32**: 10' x 10' (dashed line)
- CL.33**: 10' x 10' (dashed line)
- CL.34**: 10' x 10' (dashed line)
- CL.35**: 10' x 10' (dashed line)
- CL.36**: 10' x 10' (dashed line)
- CL.37**: 10' x 10' (dashed line)
- CL.38**: 10' x 10' (dashed line)
- CL.39**: 10' x 10' (dashed line)
- CL.40**: 10' x 10' (dashed line)
- CL.41**: 10' x 10' (dashed line)
- CL.42**: 10' x 10' (dashed line)
- CL.43**: 10' x 10' (dashed line)
- CL.44**: 10' x 10' (dashed line)
- CL.45**: 10' x 10' (dashed line)
- CL.46**: 10' x 10' (dashed line)
- CL.47**: 10' x 10' (dashed line)
- CL.48**: 10' x 10' (dashed line)
- CL.49**: 10' x 10' (dashed line)
- CL.50**: 10' x 10' (dashed line)
- CL.51**: 10' x 10' (dashed line)
- CL.52**: 10' x 10' (dashed line)
- CL.53**: 10' x 10' (dashed line)
- CL.54**: 10' x 10' (dashed line)
- CL.55**: 10' x 10' (dashed line)
- CL.56**: 10' x 10' (dashed line)
- CL.57**: 10' x 10' (dashed line)
- CL.58**: 10' x 10' (dashed line)
- CL.59**: 10' x 10' (dashed line)
- CL.60**: 10' x 10' (dashed line)
- CL.61**: 10' x 10' (dashed line)
- CL.62**: 10' x 10' (dashed line)
- CL.63**: 10' x 10' (dashed line)
- CL.64**: 10' x 10' (dashed line)
- CL.65**: 10' x 10' (dashed line)
- CL.66**: 10' x 10' (dashed line)
- CL.67**: 10' x 10' (dashed line)
- CL.68**: 10' x 10' (dashed line)
- CL.69**: 10' x 10' (dashed line)
- CL.70**: 10' x 10' (dashed line)
- CL.71**: 10' x 10' (dashed line)
- CL.72**: 10' x 10' (dashed line)
- CL.73**: 10' x 10' (dashed line)
- CL.74**: 10' x 10' (dashed line)
- CL.75**: 10' x 10' (dashed line)
- CL.76**: 10' x 10' (dashed line)
- CL.77**: 10' x 10' (dashed line)
- CL.78**: 10' x 10' (dashed line)
- CL.79**: 10' x 10' (dashed line)
- CL.80**: 10' x 10' (dashed line)
- CL.81**: 10' x 10' (dashed line)
- CL.82**: 10' x 10' (dashed line)
- CL.83**: 10' x 10' (dashed line)
- CL.84**: 10' x 10' (dashed line)
- CL.85**: 10' x 10' (dashed line)
- CL.86**: 10' x 10' (dashed line)
- CL.87**: 10' x 10' (dashed line)
- CL.88**: 10' x 10' (dashed line)
- CL.89**: 10' x 10' (dashed line)
- CL.90**: 10' x 10' (dashed line)
- CL.91**: 10' x 10' (dashed line)
- CL.92**: 10' x 10' (dashed line)
- CL.93**: 10' x 10' (dashed line)
- CL.94**: 10' x 10' (dashed line)
- CL.95**: 10' x 10' (dashed line)
- CL.96**: 10' x 10' (dashed line)
- CL.97**: 10' x 10' (dashed line)
- CL.98**: 10' x 10' (dashed line)
- CL.99**: 10' x 10' (dashed line)
- CL.100**: 10' x 10' (dashed line)

CHOICE IS THE ULTIMATE LUXURY

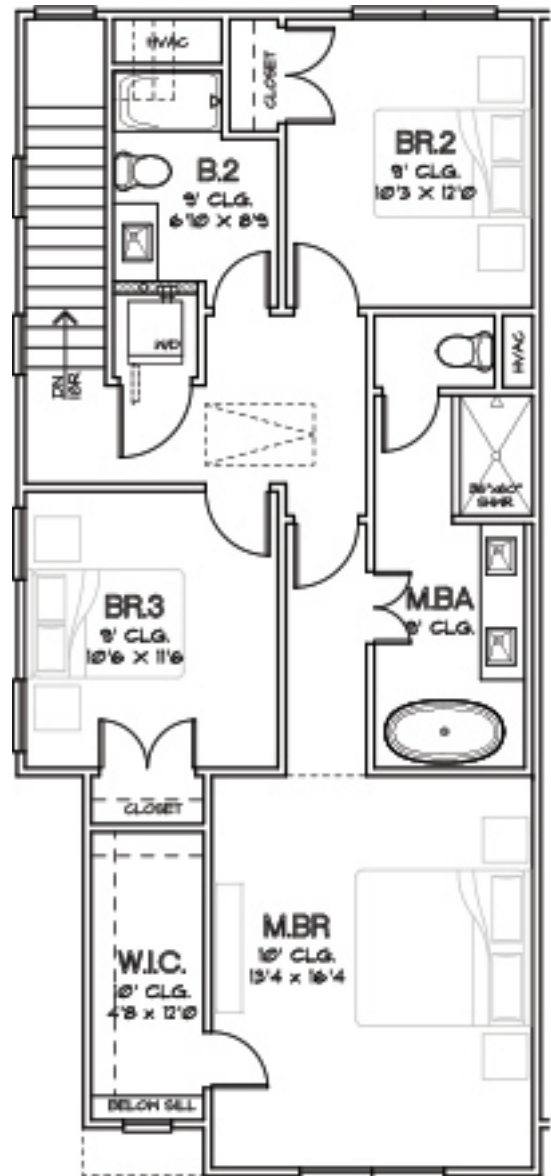


CITY HOMES
CHOICE

PARK AT PINEMONT
PLAN 1533
1,533 SQ.FT.



FIRST FLOOR



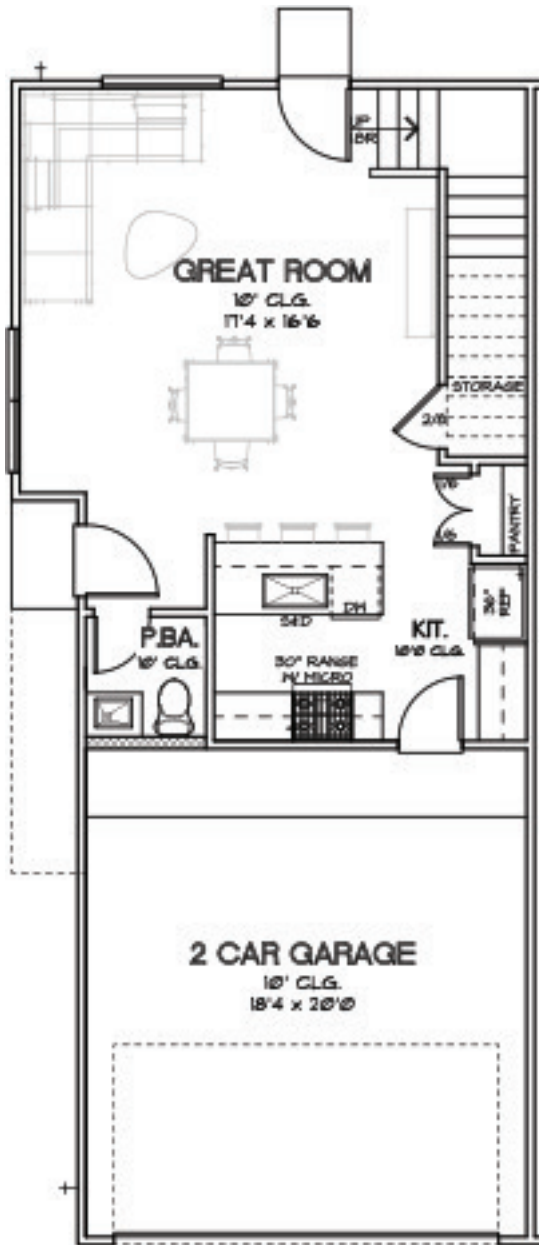
SECOND FLOOR

CHOICE IS THE ULTIMATE LUXURY

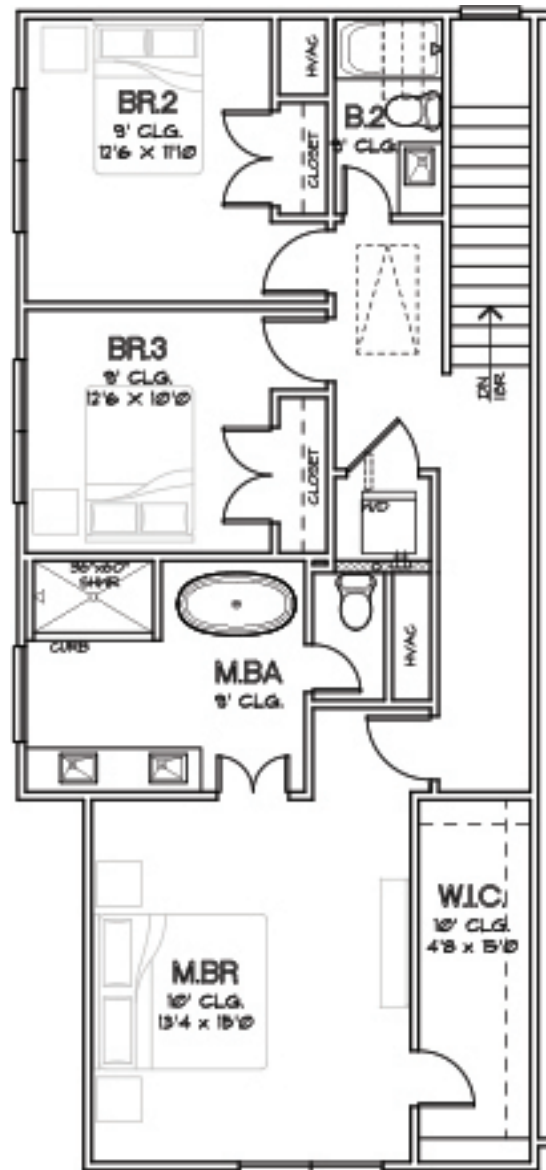


CITY HOMES
CHOICE

PARK AT PINEMONT
PLAN 1534
1,534 SQ.FT.

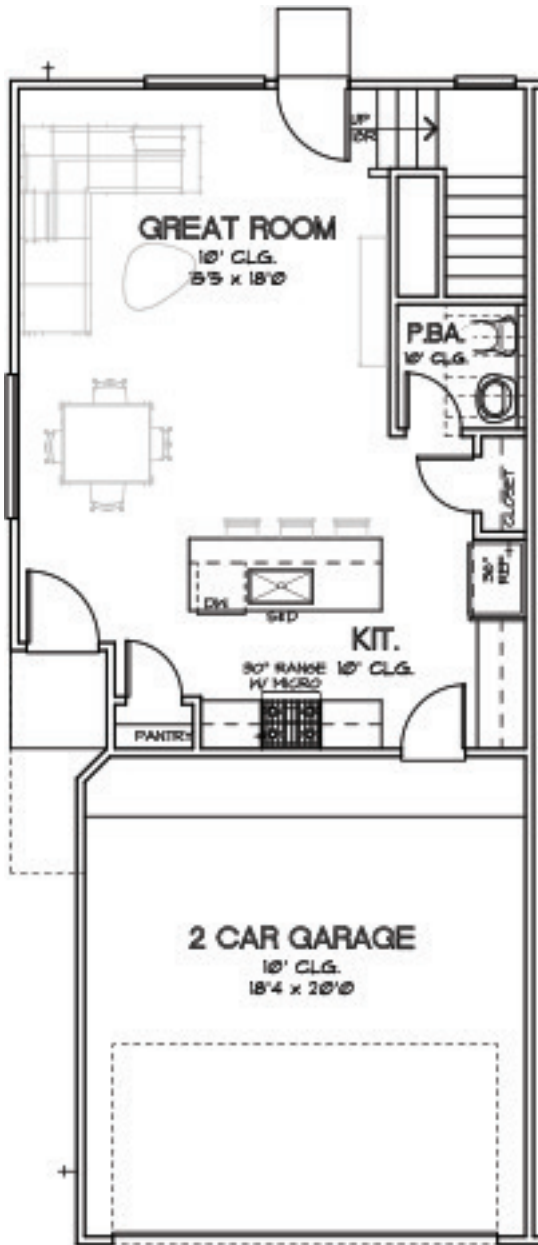


FIRST FLOOR



SECOND FLOOR

CHOICE IS THE ULTIMATE LUXURY

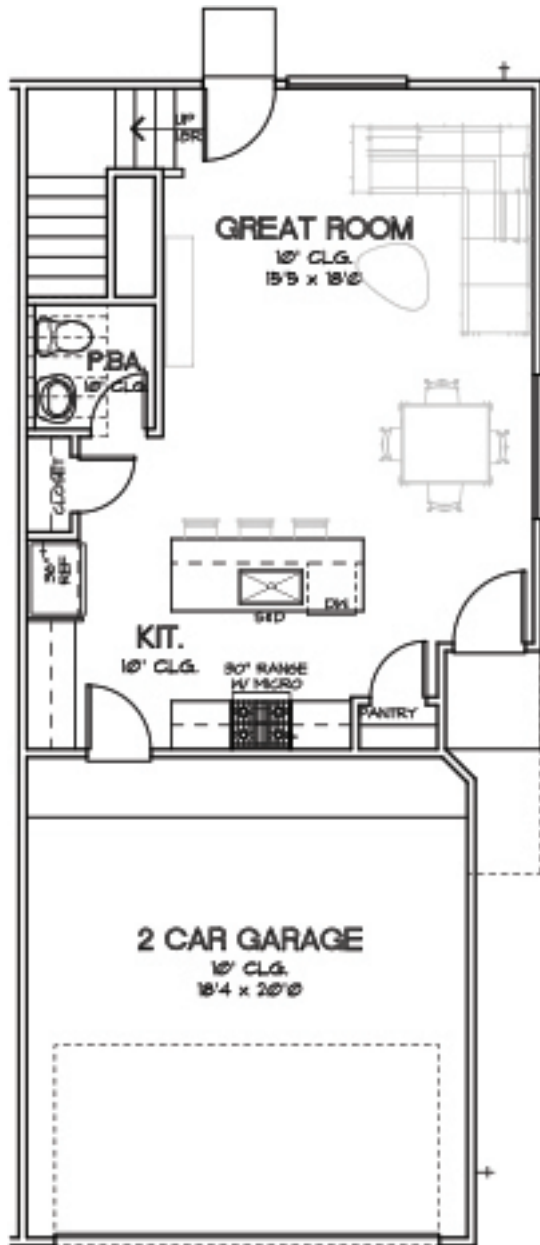


FIRST FLOOR



SECOND FLOOR

CHOICE IS THE ULTIMATE LUXURY

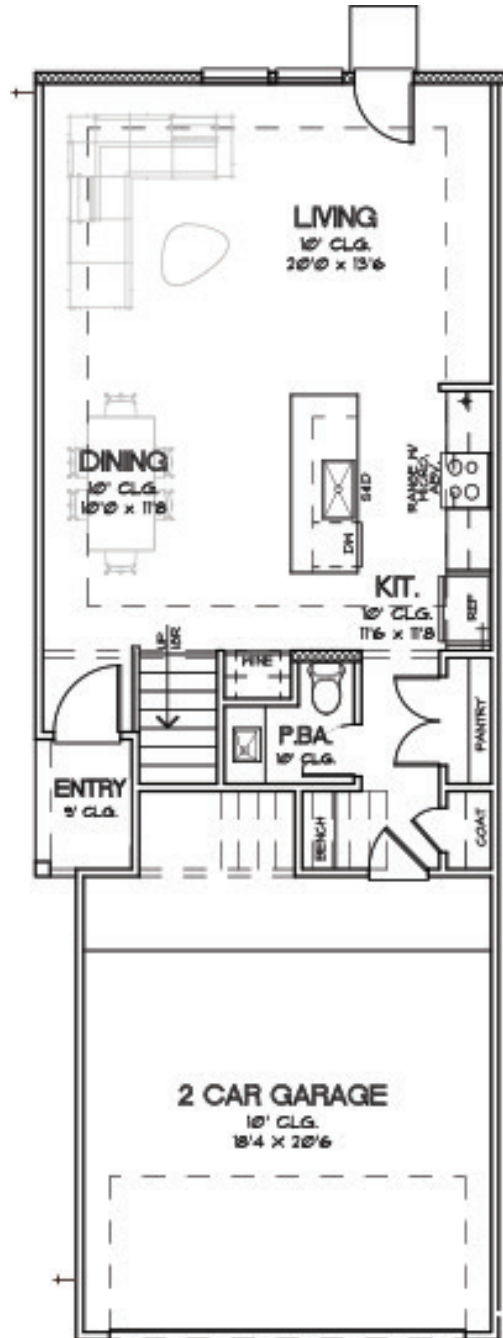


FIRST FLOOR



SECOND FLOOR

CHOICE IS THE ULTIMATE LUXURY



FIRST FLOOR

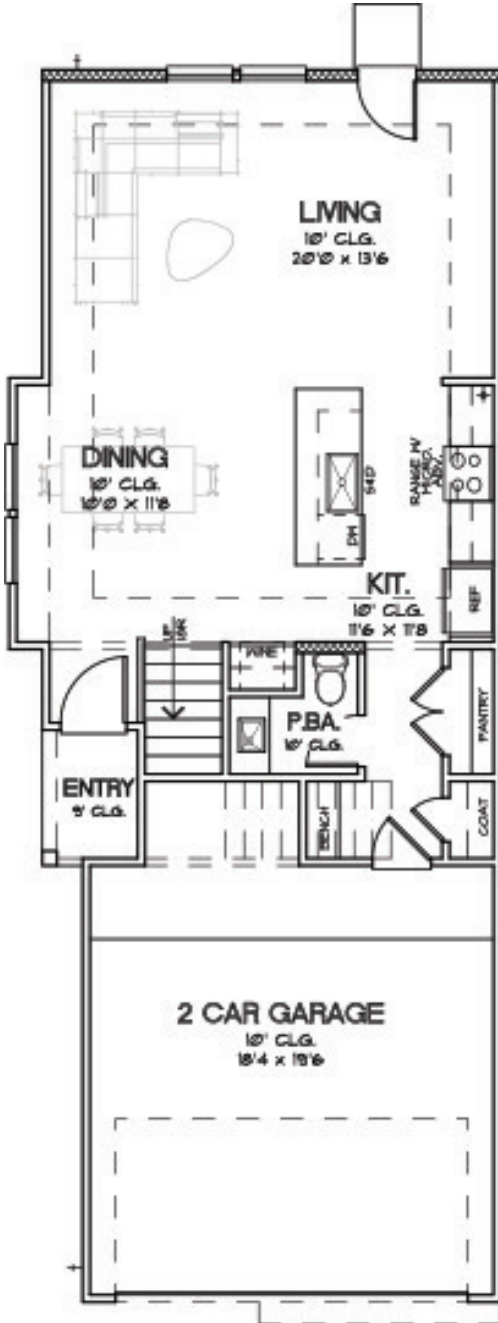


SECOND FLOOR

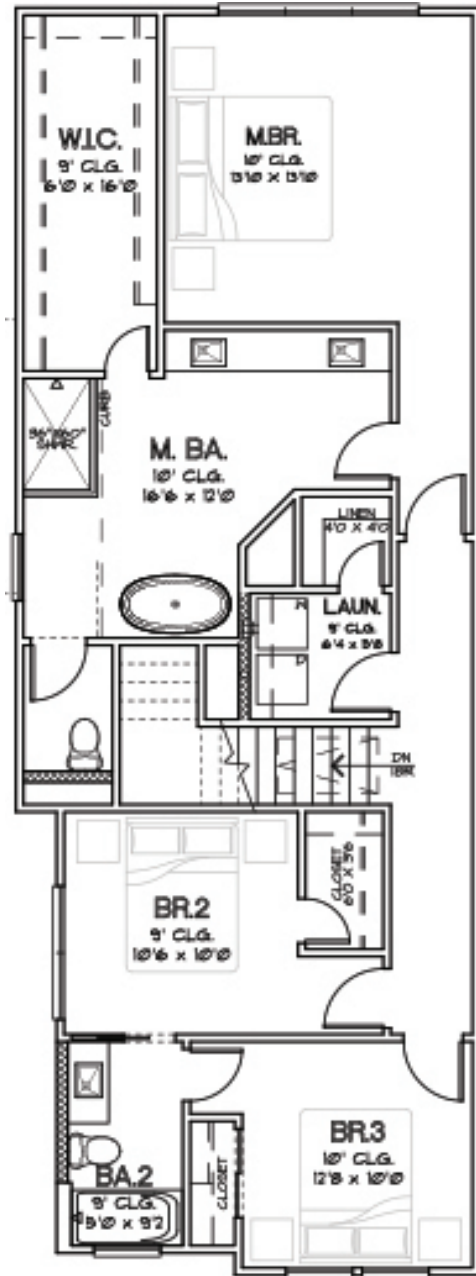
CHOICE IS THE ULTIMATE LUXURY



PARK AT PINEMONT
PLAN 1806
1,806 SQ.FT.



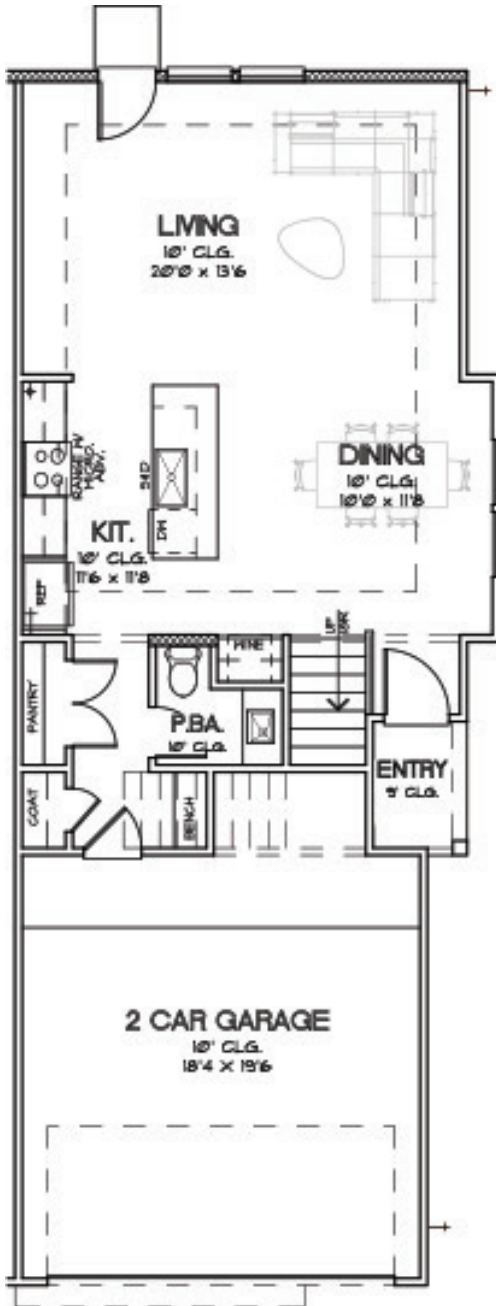
FIRST FLOOR



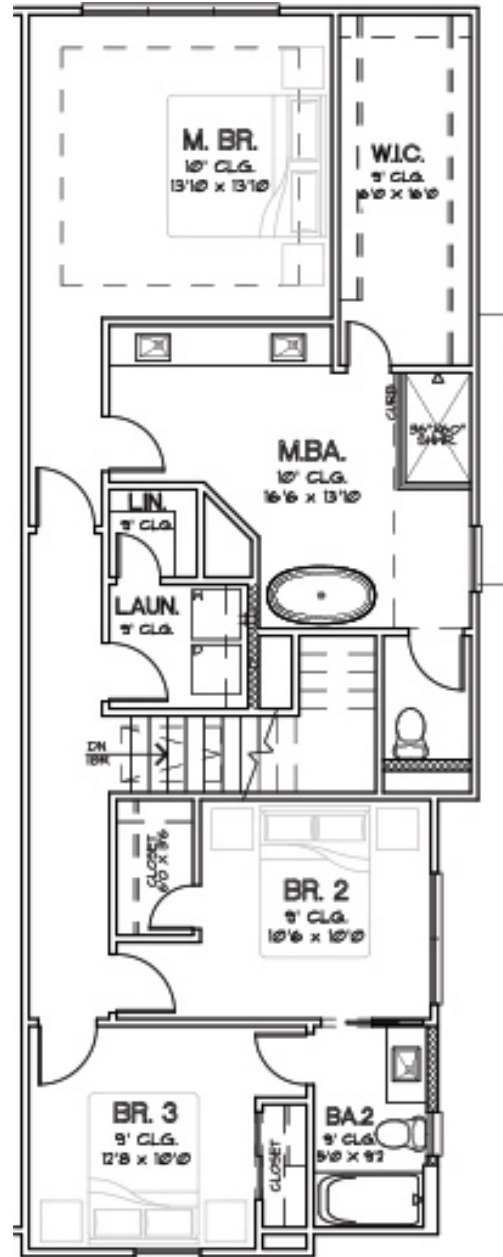
SECOND FLOOR

CHOICE IS THE ULTIMATE LUXURY





FIRST FLOOR

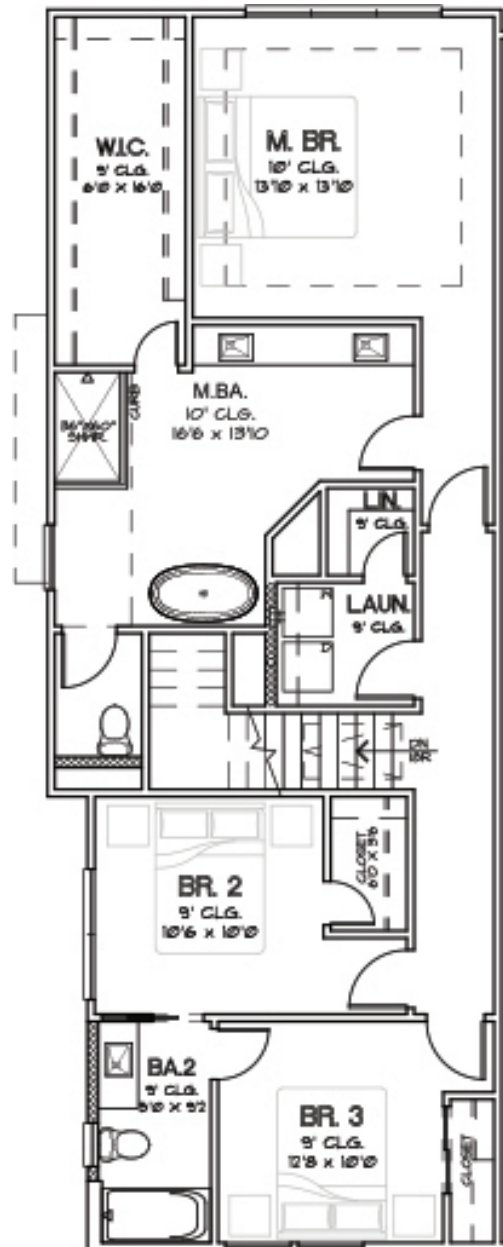


SECOND FLOOR

CHOICE IS THE ULTIMATE LUXURY



FIRST FLOOR

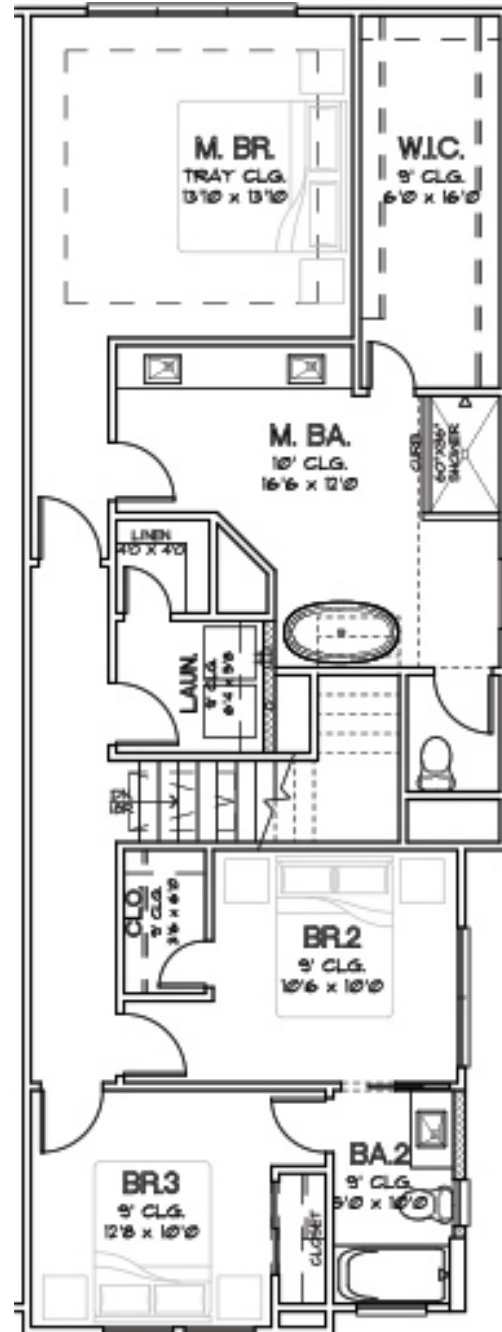


SECOND FLOOR

CHOICE IS THE ULTIMATE LUXURY



FIRST FLOOR



SECOND FLOOR

CHOICE IS THE ULTIMATE LUXURY



This floor plan shows a 2-car garage (10'4" x 20'6") at the bottom. Above it is the main living area. On the left is the ENTRY (8' C.L.G.) with a staircase labeled 'UP' and 'DOWN'. To the right of the entry is the P.B.A. (Patio Back Area) (10' C.L.G.) which includes a toilet and a shower. Further right is the KITCHEN (KIT.) (10' C.L.G., 11'6" x 11'8") featuring a sink, stove, and refrigerator. Adjacent to the kitchen is the PANTRY and a COAT closet. The DINING area (10' C.L.G., 10'0" x 11'8") is located to the left of the kitchen. The LIVING area (10' C.L.G., 20'0" x 13'6") is at the top, featuring a fireplace and a large window. A central staircase labeled 'UP' and 'DOWN' connects the living area to the P.B.A. and the garage.

MBR.
TRAY CLG.
13'10" x 13'10"

W.C.
5' CLG.
6'0" x 10'0"

M.B.A.
10' CLG.
16'6" x 13'10"

LIN.
8' CLG.

LAUN.
8' CLG.

BR. 2
9' CLG.
10'6" x 10'10"

BR. 3
9' CLG.
12'0" x 10'10"

BA2
5' CLG.
5'0" x 9'2"

CHOICE IS THE ULTIMATE LUXURY



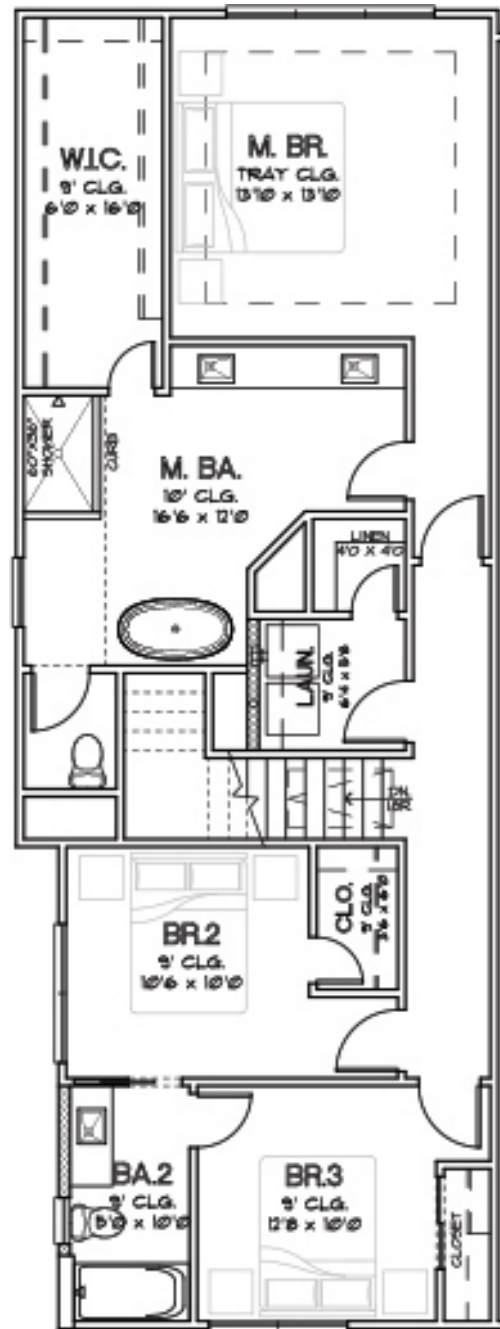


CITY HOMES
CHOICE

PARK AT PINEMONT
PLAN 1824
1,824 SQ.FT.



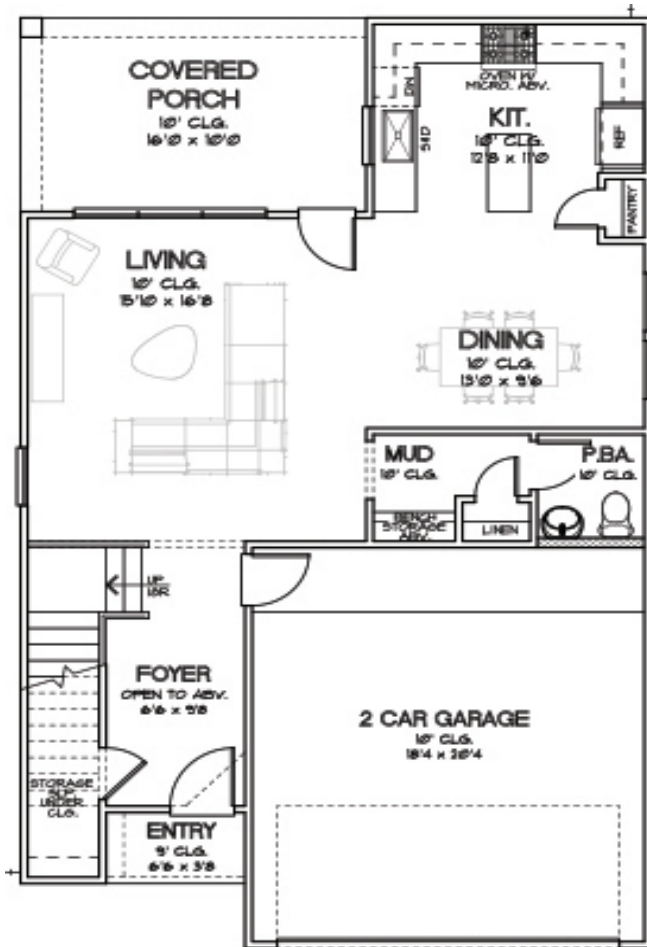
FIRST FLOOR



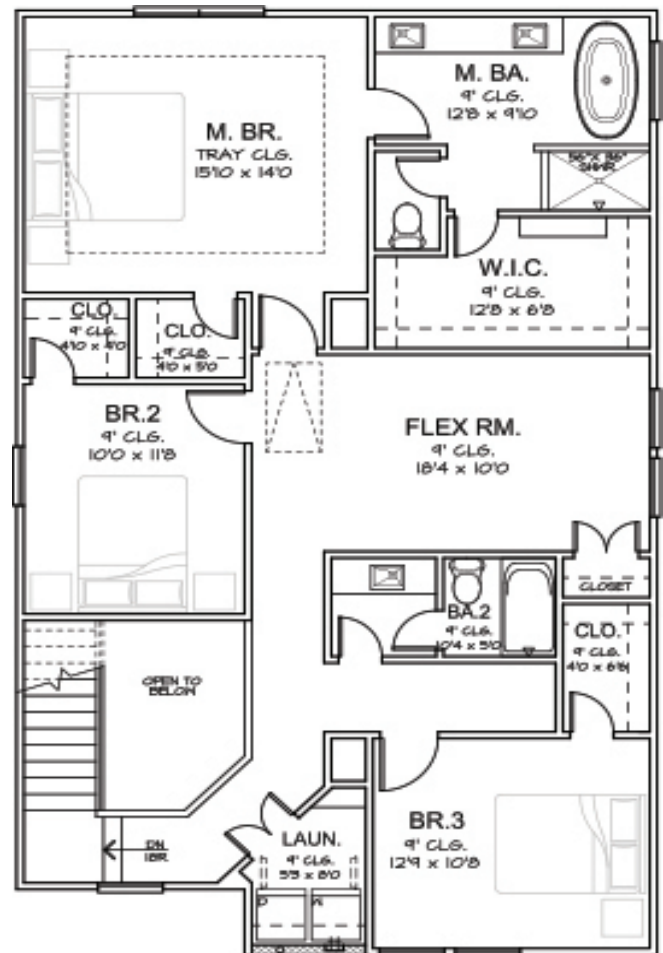
SECOND FLOOR

CHOICE IS THE ULTIMATE LUXURY

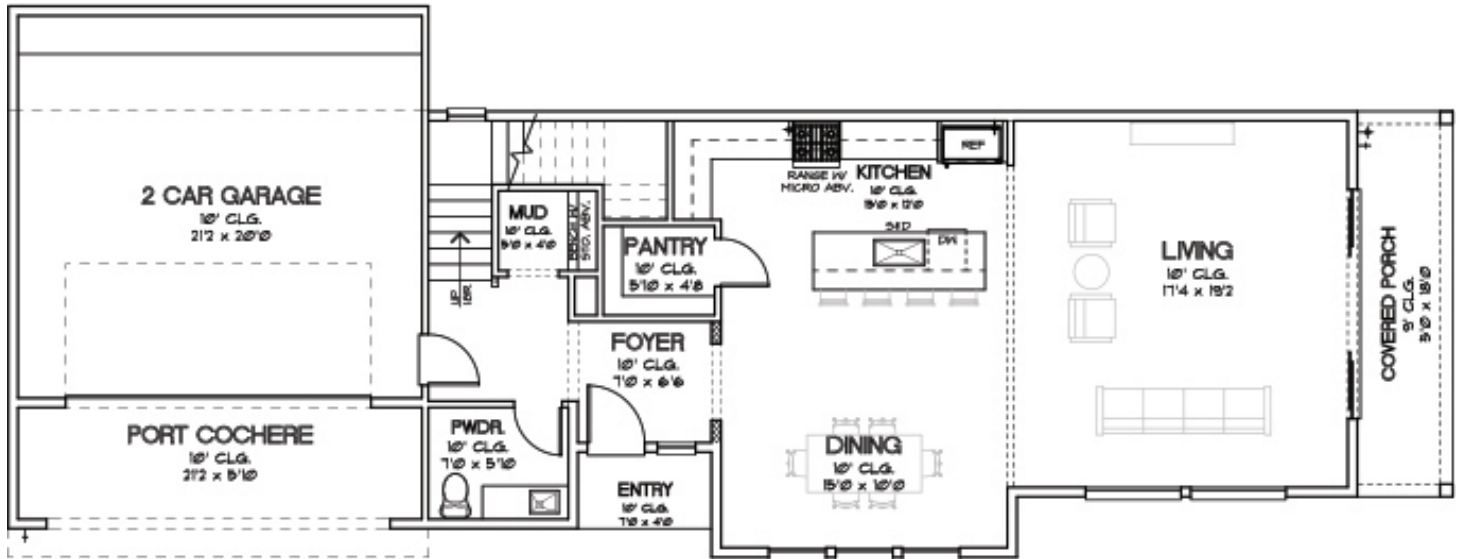




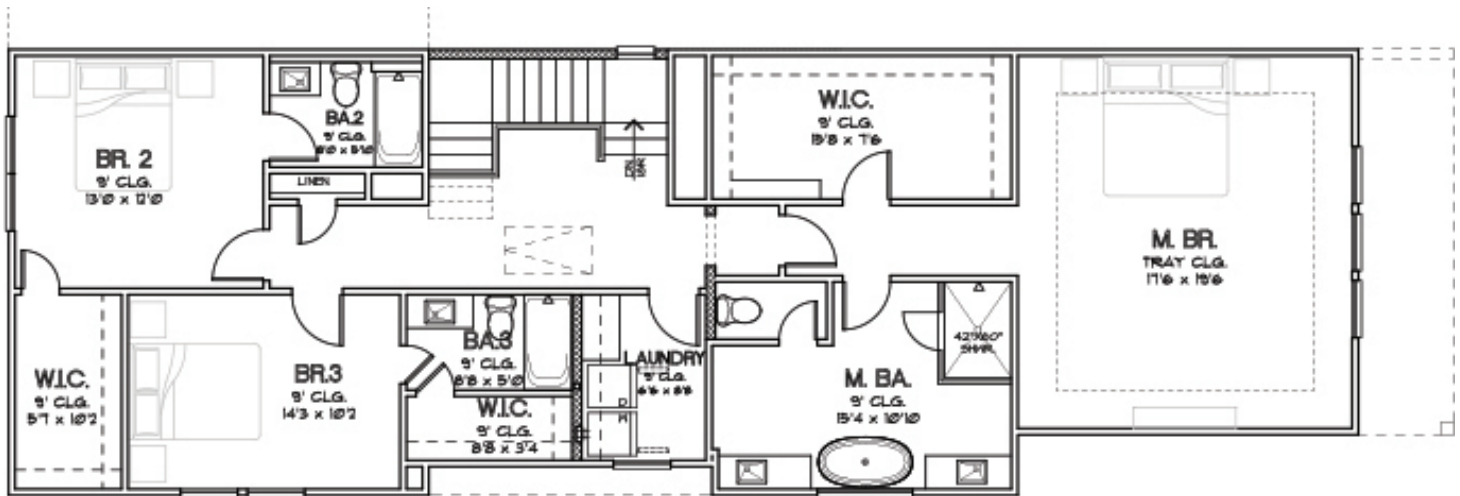
FIRST FLOOR



SECOND FLOOR



FIRST FLOOR



SECOND FLOOR

CHOICE IS THE ULTIMATE LUXURY



PARK AT PINEMONT

FEATURES & SPECIFICATIONS

CHOICE IS THE ULTIMATE LUXURY

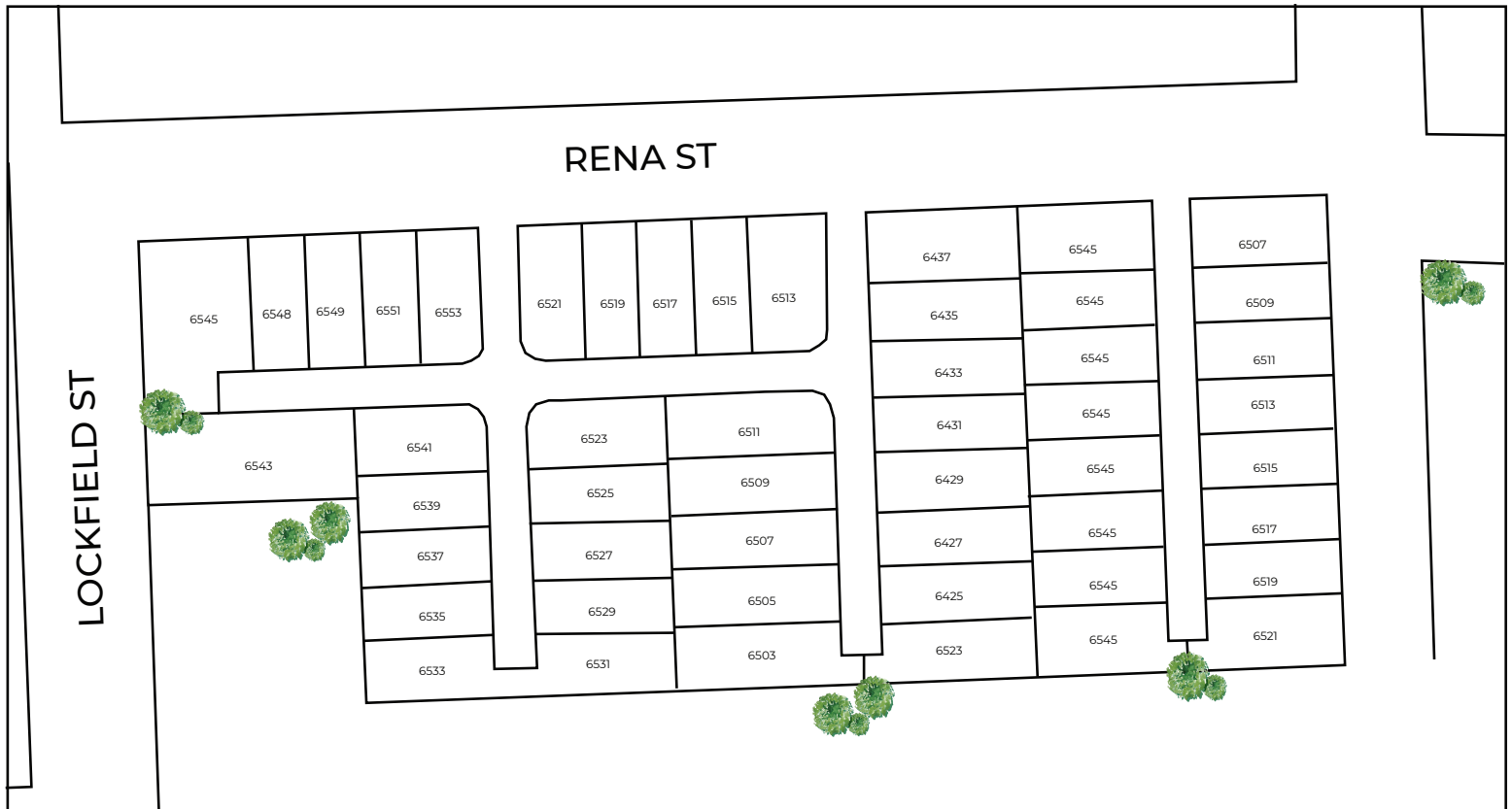




CITY HOMES
CHOICE

PARK AT PINEMONT

SITE PLAN



To learn more about this community, please contact:

Michael Afshari | 832.875.3252
michael.afshari@compass.com

CHOICE IS THE ULTIMATE LUXURY

