



PALISADES PARK

A community of Two & Three Level Residences in Timbergrove



To learn more about this community, please contact:

Michael Afshari | 832.875.3252
michael.afshari@compass.com

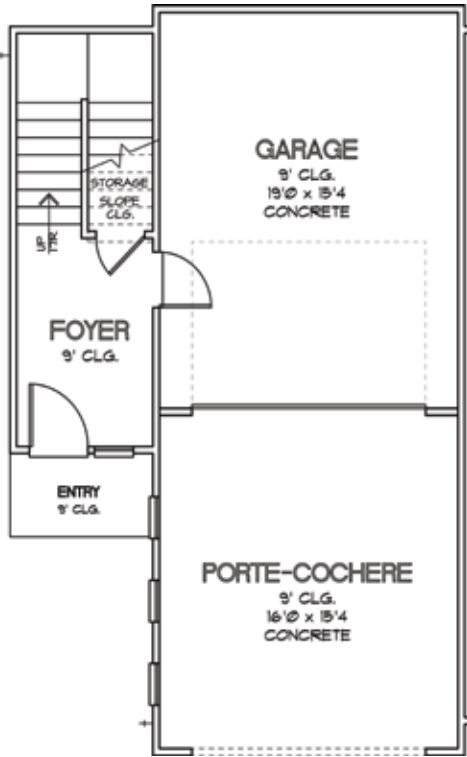
CHOICE IS THE ULTIMATE LUXURY





CITY HOMES
CHOICE

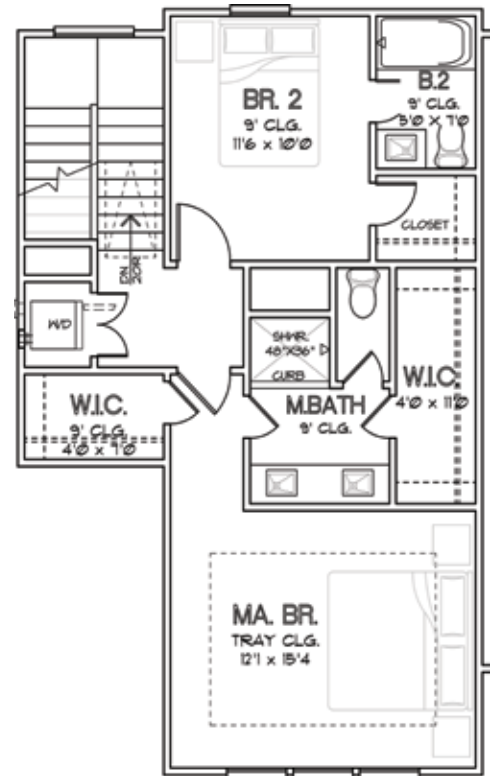
PALISADES PARK
1,457 SQ.FT.



FIRST FLOOR



SECOND FLOOR

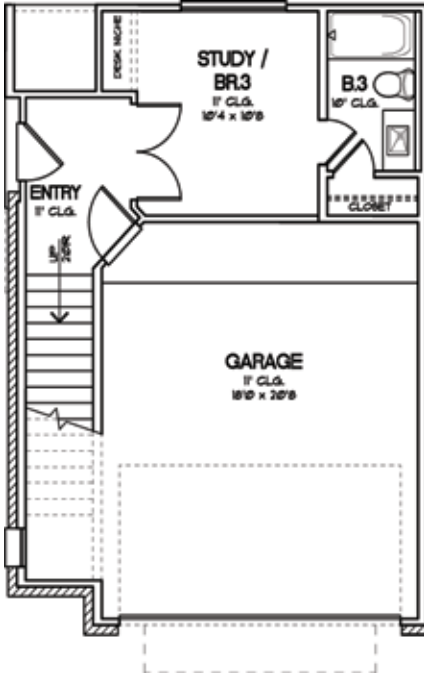


THIRD FLOOR

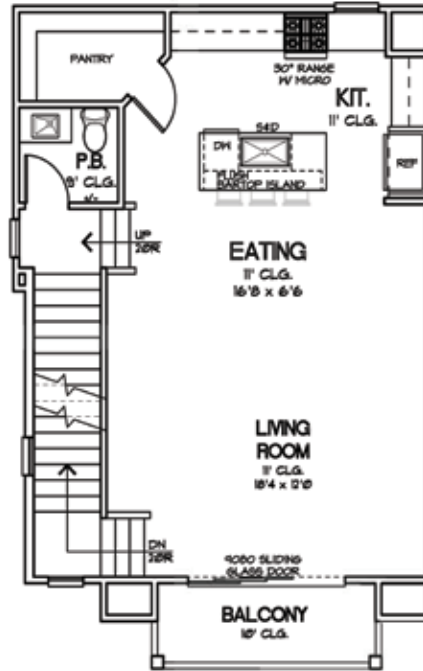


CHOICE IS THE ULTIMATE LUXURY

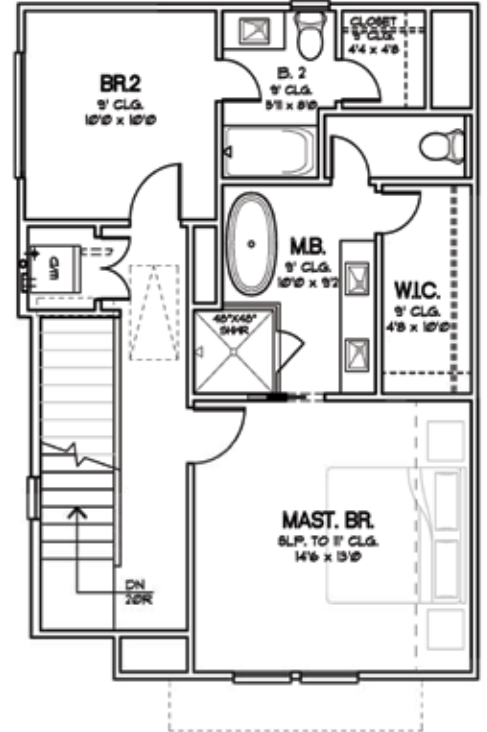




FIRST FLOOR



SECOND FLOOR



THIRD FLOOR

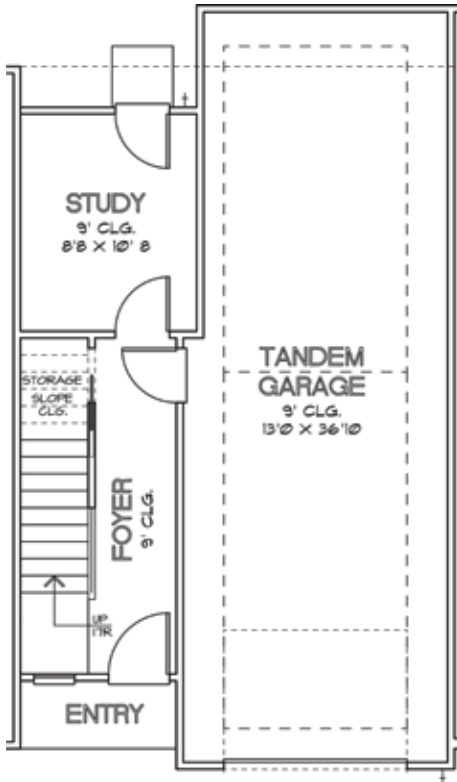


CHOICE IS THE ULTIMATE LUXURY

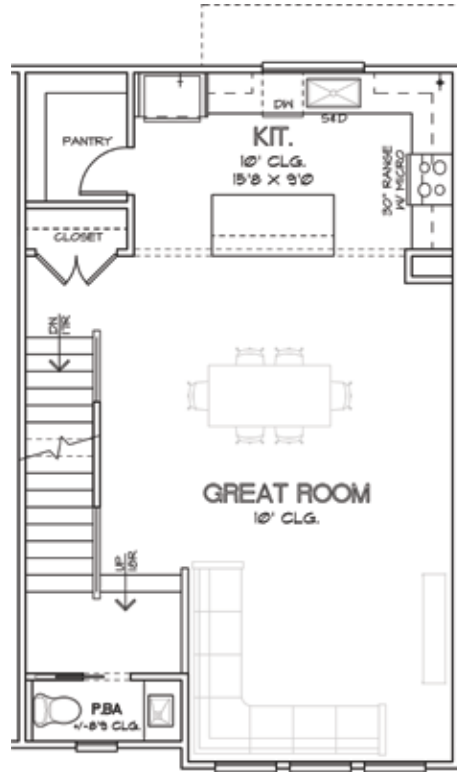


CITY HOMES
CHOICE

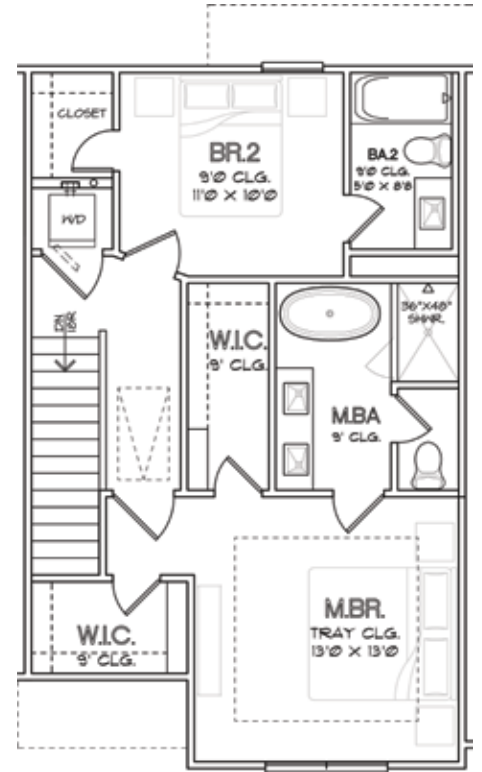
PALISADES PARK
1,650 SQ.FT.



FIRST FLOOR



SECOND FLOOR

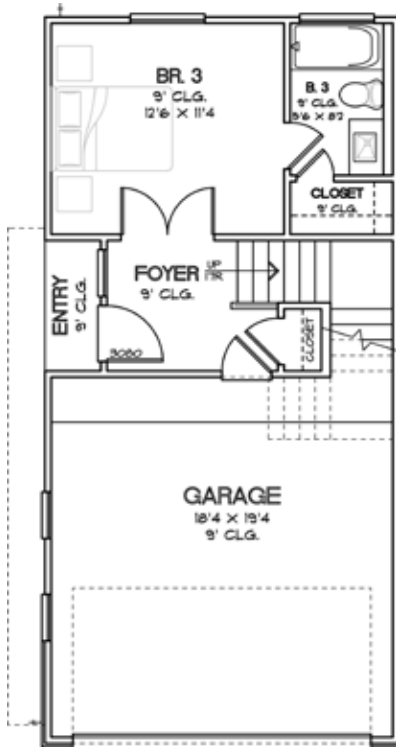


THIRD FLOOR



CHOICE IS THE ULTIMATE LUXURY

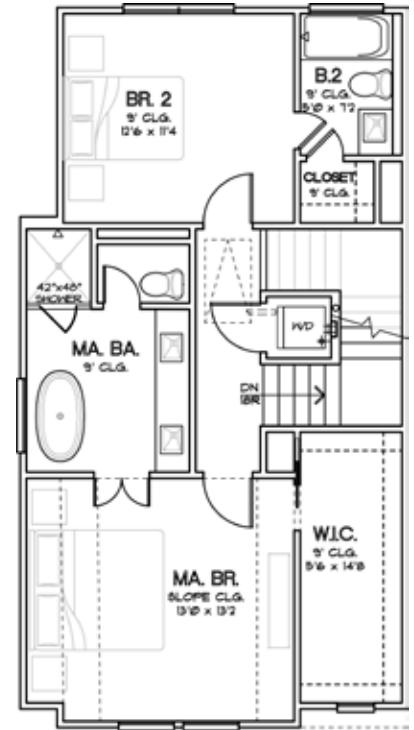




FIRST FLOOR



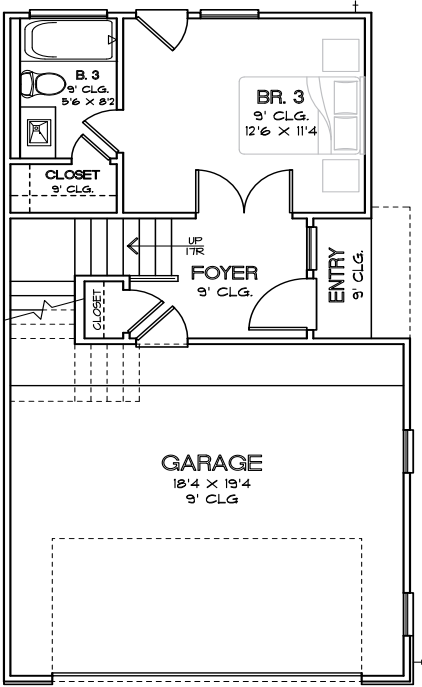
SECOND FLOOR



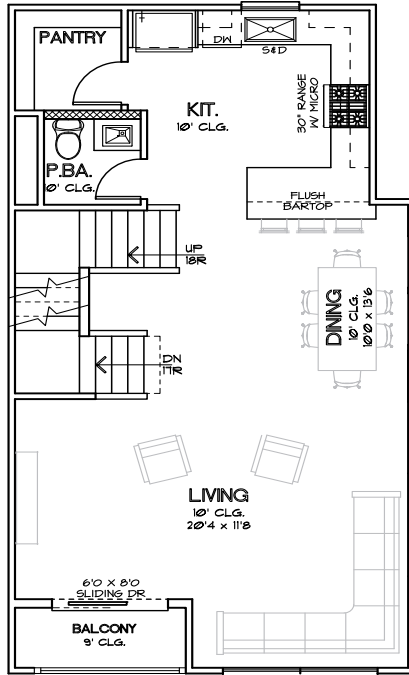
THIRD FLOOR



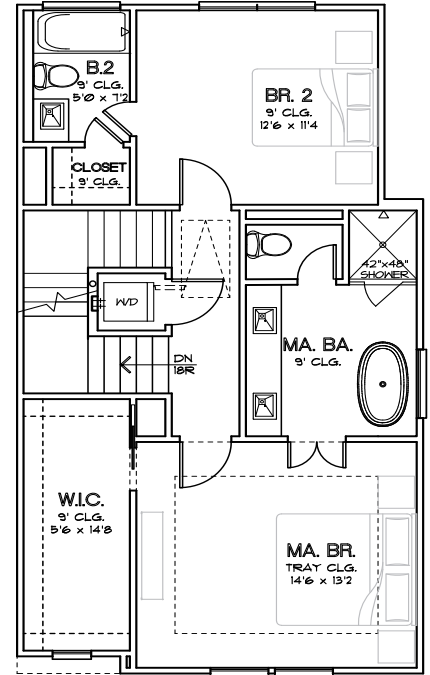
CHOICE IS THE ULTIMATE LUXURY



FIRST FLOOR



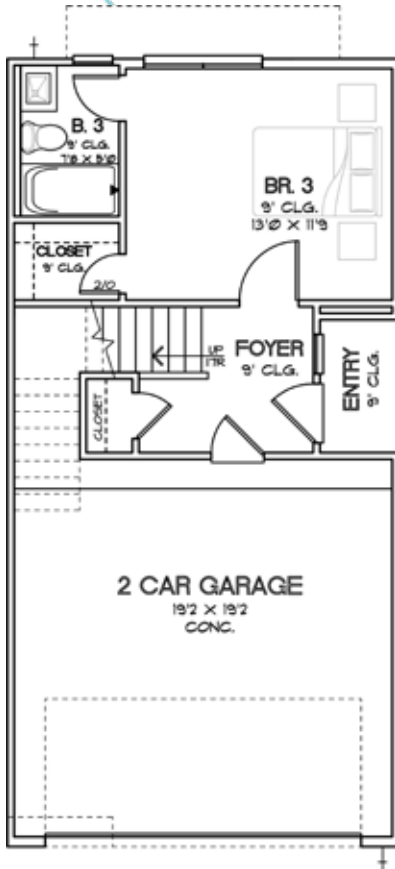
SECOND FLOOR



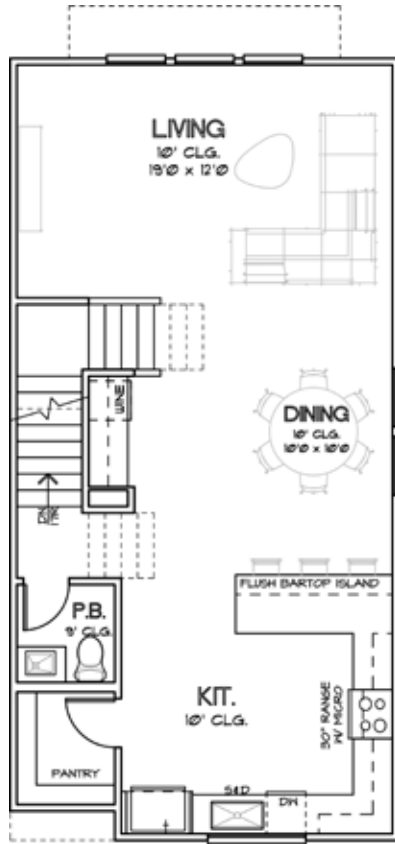
THIRD FLOOR



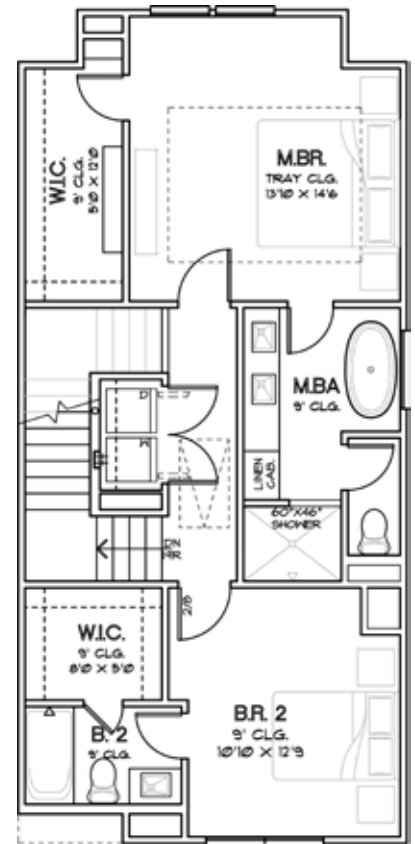
CHOICE IS THE ULTIMATE LUXURY



FIRST FLOOR



SECOND FLOOR



THIRD FLOOR

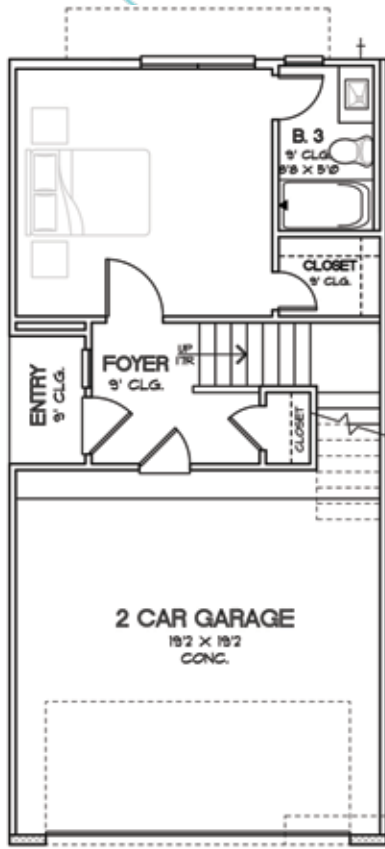


CHOICE IS THE ULTIMATE LUXURY



CITY HOMES
CHOICE

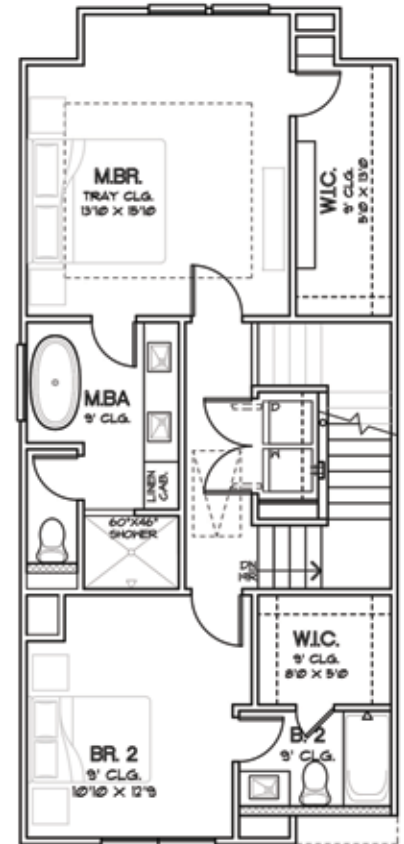
PALISADES PARK
2,011 SQ.FT.



FIRST FLOOR



SECOND FLOOR



THIRD FLOOR



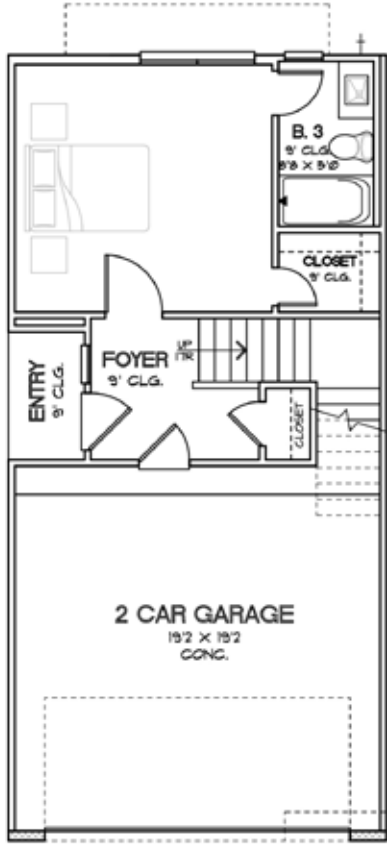
CHOICE IS THE ULTIMATE LUXURY





CITY HOMES
CHOICE

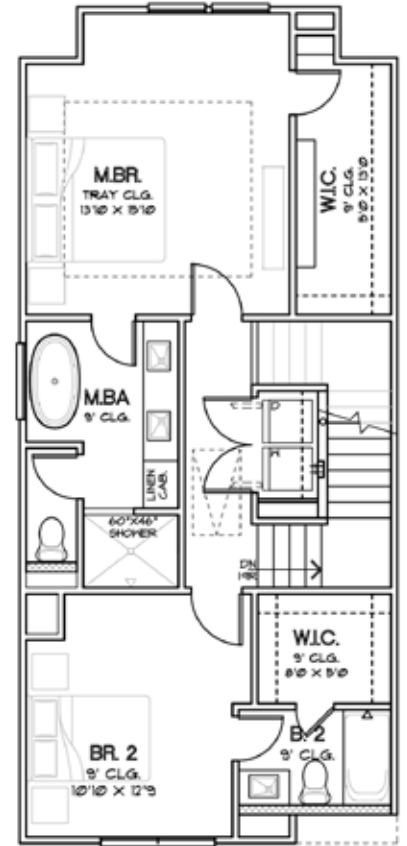
PALISADES PARK
2,003 SQ.FT.



FIRST FLOOR



SECOND FLOOR



THIRD FLOOR



CHOICE IS THE ULTIMATE LUXURY





PALISADES PARK

FEATURES & SPECIFICATIONS

FIRST FLOOR (ENTRY WAY, FIRST BEDROOM, FIRST BATHROOM)

- Engineered Swiss Flooring in Entry Hall
- Coat Closet
- First Bedroom with Engineered Swiss Flooring
- Designer Porcelain Floors in Bathroom and Shower
- Quartz Countertops
- Undermounted Sink
- Modern Chrome Plumbing Fixtures
- Laminate Wood Steps up to Second Floor

SECOND FLOOR (KITCHEN, DINING, LIVING ROOM)

- Engineered Swiss Flooring throughout Second Floor
- Laminate Wood Treads
- Quartz Countertops
- Subway Tile Backsplash
- Shaker Cabinetry
- Powder Room with Pedestal Sink

THIRD FLOOR

- Engineered Swiss Flooring in Hallways
- Laminate Wood Treads on Stairs/Risers

Master Bathroom

- Engineered Swiss Flooring
- Designer Porcelain Floors in Bathroom and Shower
- Free-Standing Soaking Tub
- Frameless Glass Shower
- Modern Chrome Plumbing Fixtures
- Undermounted Sink
- Quartz Countertops
- Mirrors
- Shaker Cabinetry

Secondary Bathroom

- Designer Porcelain Flooring and Paneling in Shower
- Quartz Countertops
- Undermounted Sink
- Modern Chrome Plumbing Fixtures
- Shaker Cabinetry

MECHANICAL SPECIFICATIONS

Foundation

- Engineered Post Tension Foundation
- 3,000 PSI Concrete
- Engineered Building Pads

Frame and Cornice

- Engineered Structural Framing
- 2"x4" Stud Grade Fire Walls, Every 16" (+or-) O.C.
- Yellow Pine Ceiling Joints 16" (+or-) O.C.
- Yellow Pine Rafters, 16" (+or-) O.C.
- 7/16" OSB Roof Decking with TechShield Radiant Barrier
- 7/16" OSB Sheathing
- Engineered Wood Trusses Per Floor

- 3/4" Tongue and Groove Subfloor
- Cem Plank Siding
- All Subfloor is Glued, Nailed and Screwed
- Anthony Power Beams
- Windstorm Per Plans and Codes

Windows

- Vinyl Frame, Insulated (Double Pane), Clear Glass with Low-E

Ceiling Heights

- Varies from 9'-12' - See Floor Plan

Exterior

- HardiPlank siding or Hardi Stucco Board
- Sherwin Williams Conflex Elastomeric Coating
- 30-Year Roof Shingle

Air Conditioning and Heating

- 16 SEER System
- Name Brand Condensing Unit
- Name Brand Furnace
- R-8/6 Silver Flex Duct in Attic
- Programmable Thermostats

Electrical

- All Copper Wiring throughout the House
- GFI Safety Switches where Required by Codes
- 125 AMP Main Electric Panel
- All Other Electrical Wiring as Per Floor Plans
- Recessed Can Lighting

Plumbing

- CPVC Vents and Drain Pipes
- Black Steel Pipes for Gas
- Insulated Exposed Water Lines
- 40-Gallon Water Heater

Insulation

Area:	Material:	R-Value:	Thickness:
Exterior Walls	Batt	R-19	5"
Cold Floors	Batt	R-19	6.25"
Ceilings	Batt	R-19	5"
Attic	Blown	R-38	12"

Appliances

- Dishwasher: Samsung DW80M2020US
- Cooktop: Samsung NX58K3310SS
- Microwave: Samsung ME16K3000AS

CHOICE IS THE ULTIMATE LUXURY



