



# EASTWOOD PARK



To learn more about this community, please contact:

**Michael Afshari** | 832.875.3252  
michael.afshari@compass.com

CHOICE IS THE ULTIMATE LUXURY

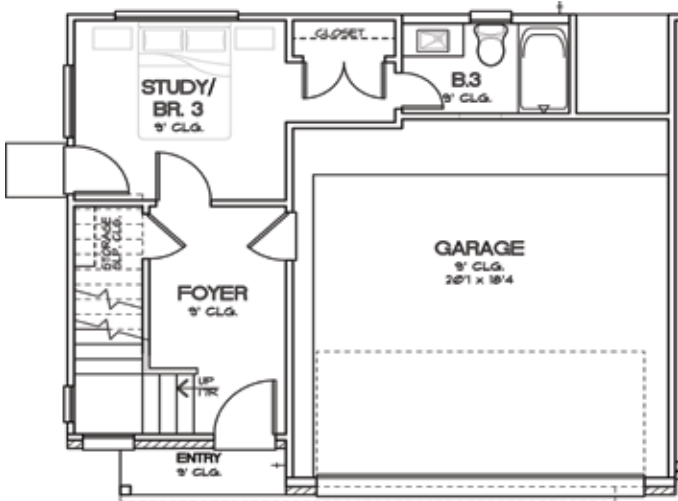




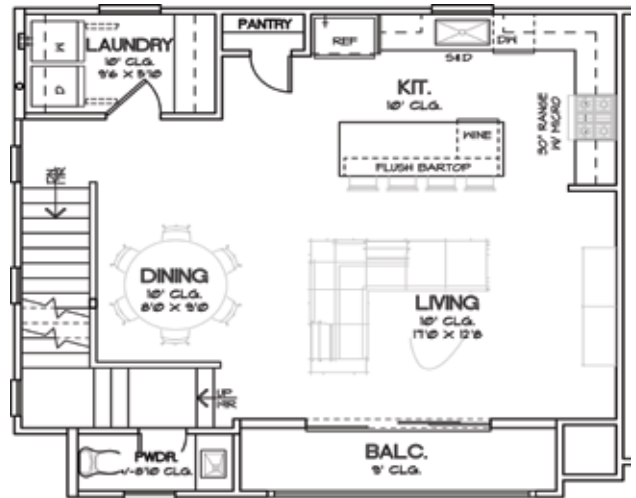
CITY HOMES  
CHOICE

# EASTWOOD PARK

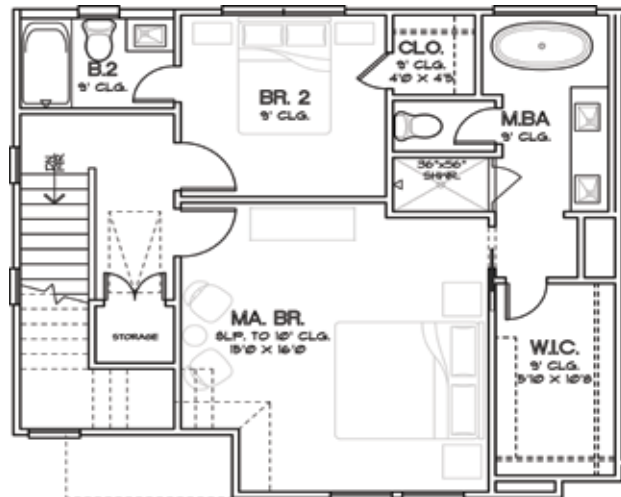
PLAN 1781



FIRST FLOOR



SECOND FLOOR



THIRD FLOOR

CHOICE IS THE ULTIMATE LUXURY

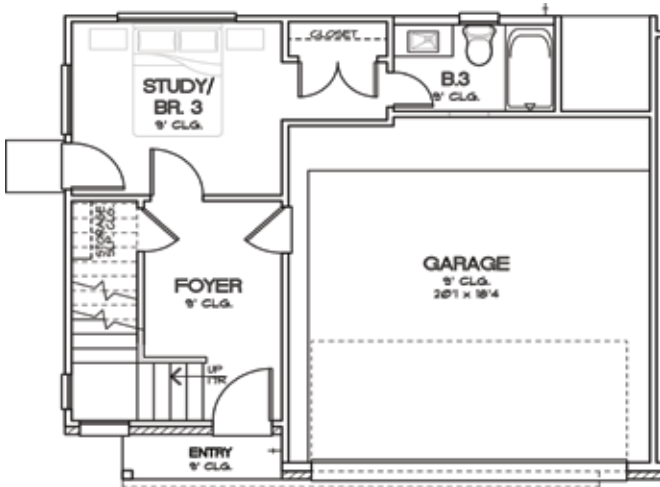




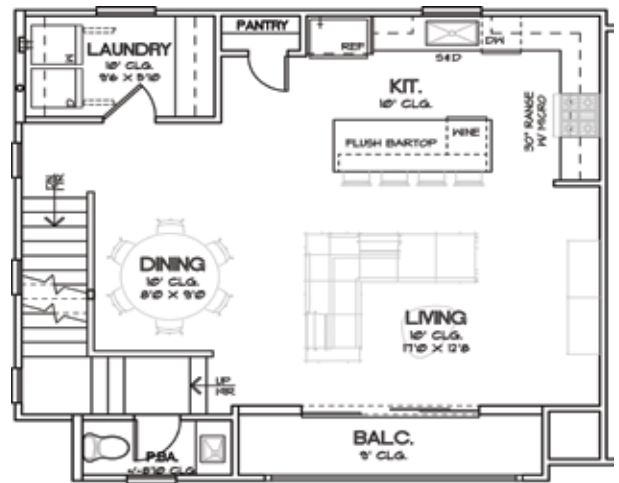
CITY HOMES  
CHOICE

# EASTWOOD PARK

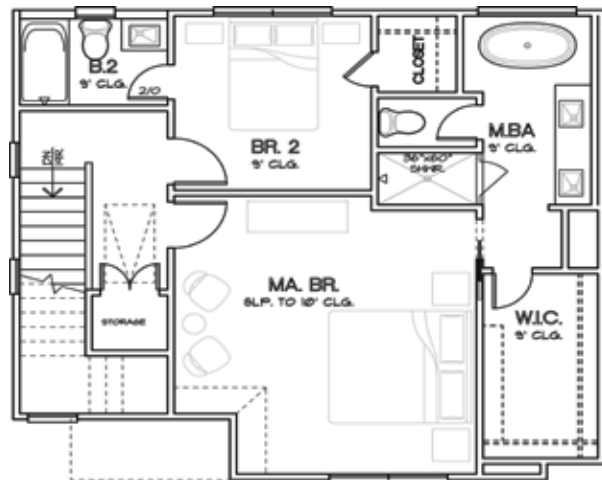
PLAN 1804



FIRST FLOOR



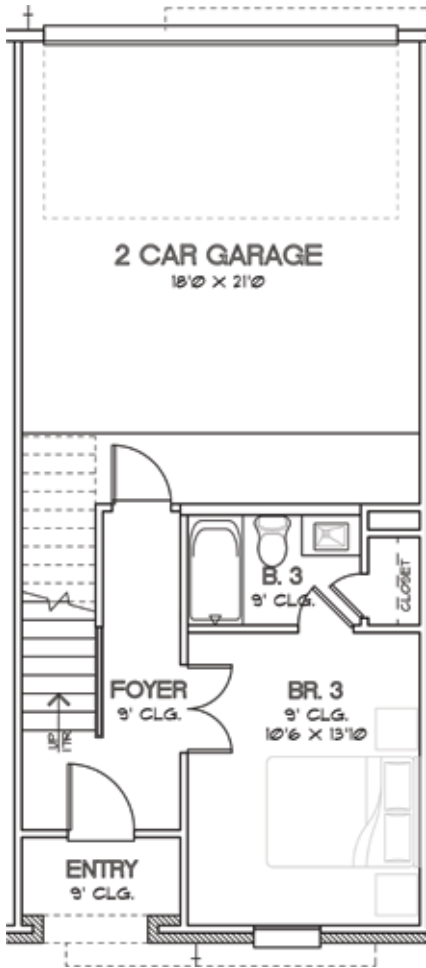
SECOND FLOOR



THIRD FLOOR

CHOICE IS THE ULTIMATE LUXURY

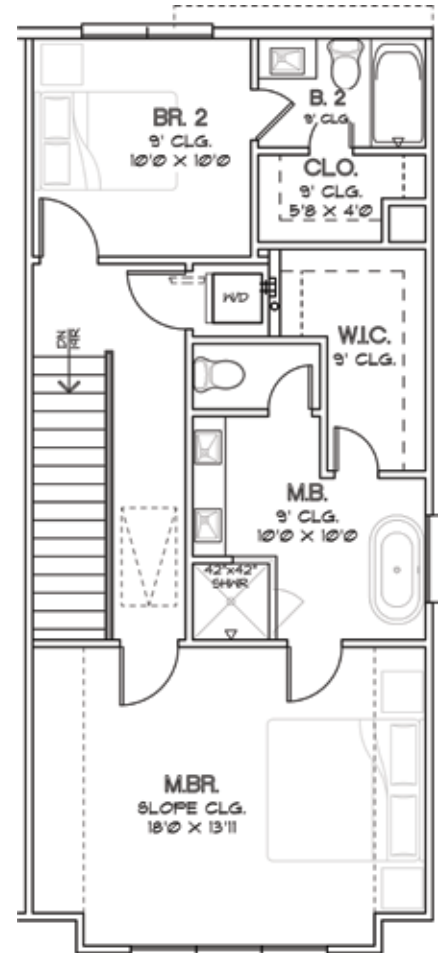




FIRST FLOOR

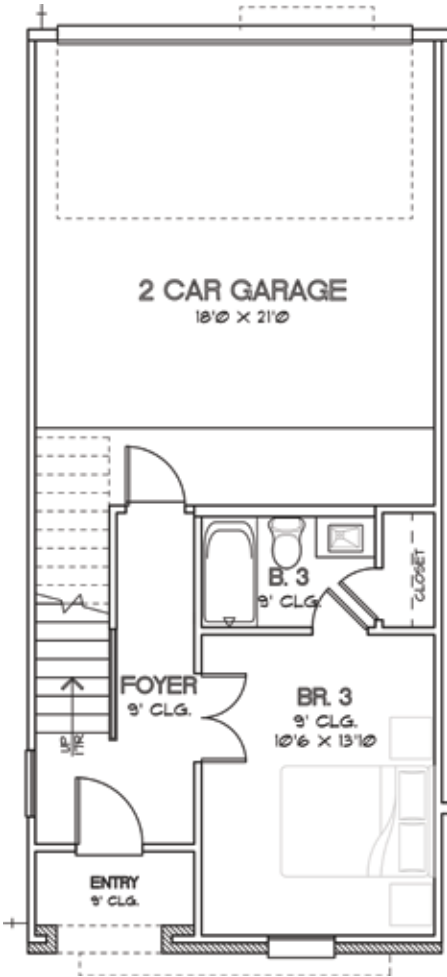


SECOND FLOOR

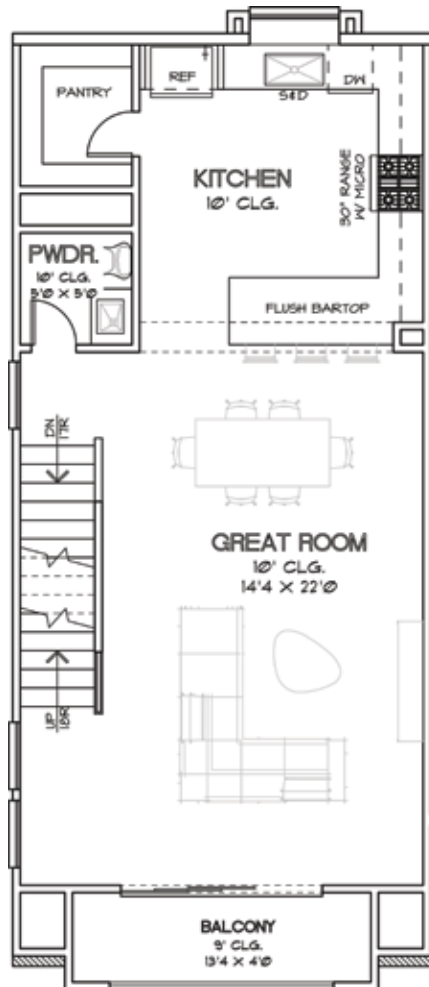


THIRD FLOOR

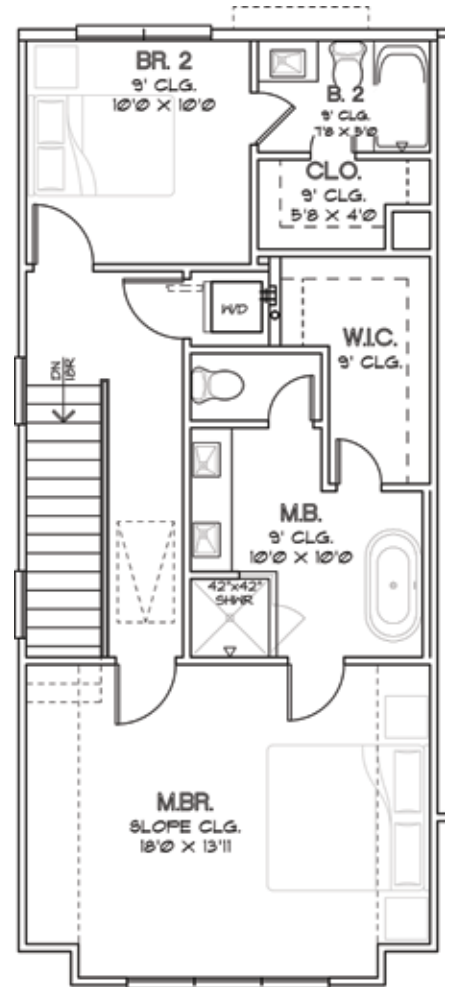
CHOICE IS THE ULTIMATE LUXURY



FIRST FLOOR

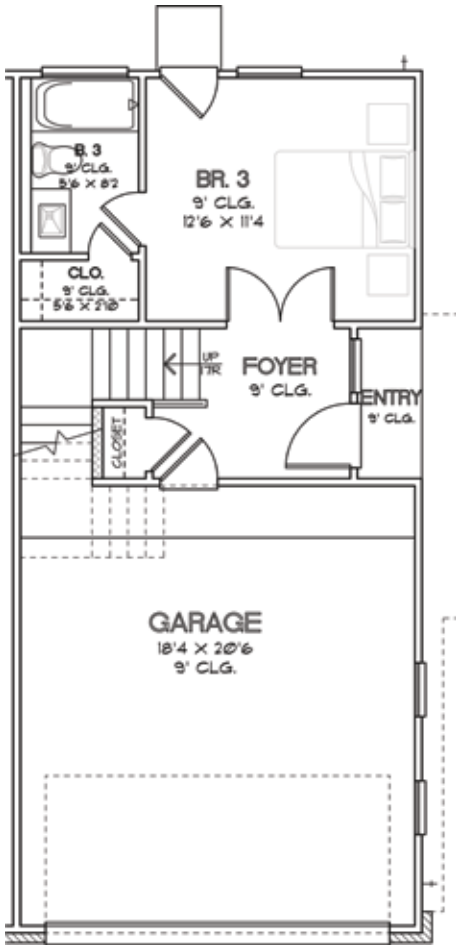


SECOND FLOOR

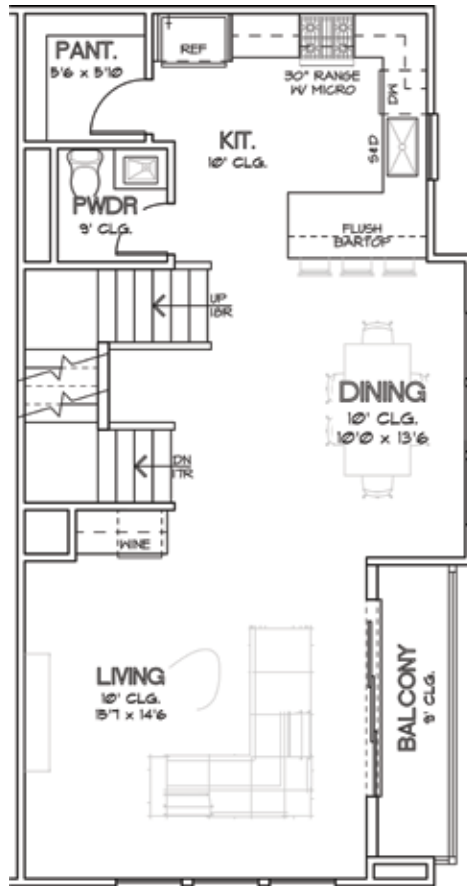


THIRD FLOOR

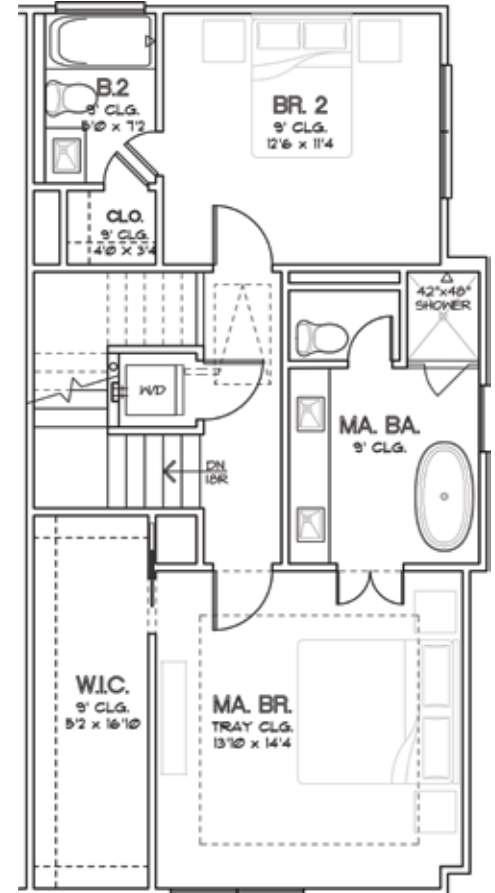
CHOICE IS THE ULTIMATE LUXURY



FIRST FLOOR

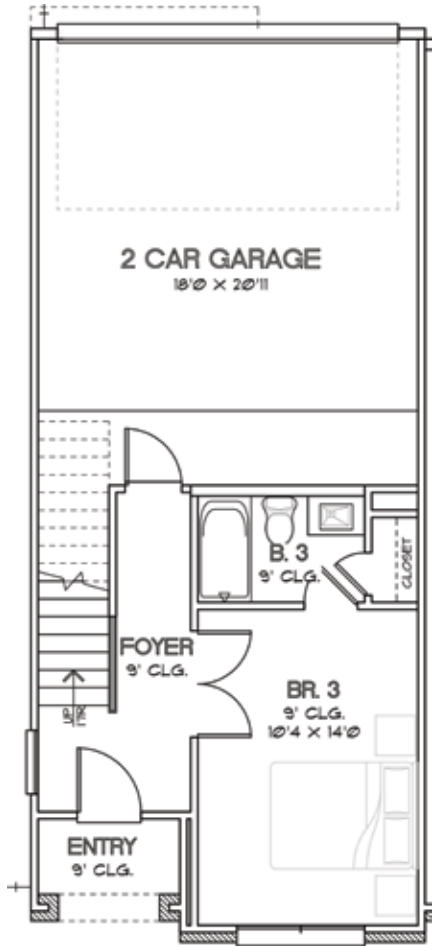


SECOND FLOOR



THIRD FLOOR

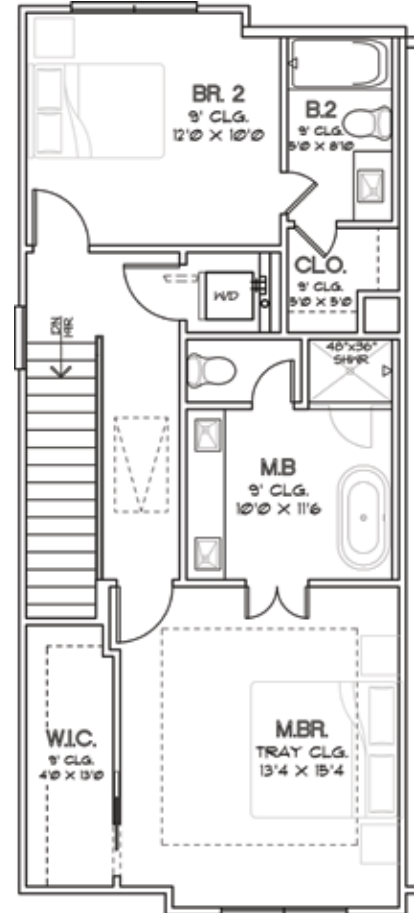
CHOICE IS THE ULTIMATE LUXURY



FIRST FLOOR



SECOND FLOOR



THIRD FLOOR

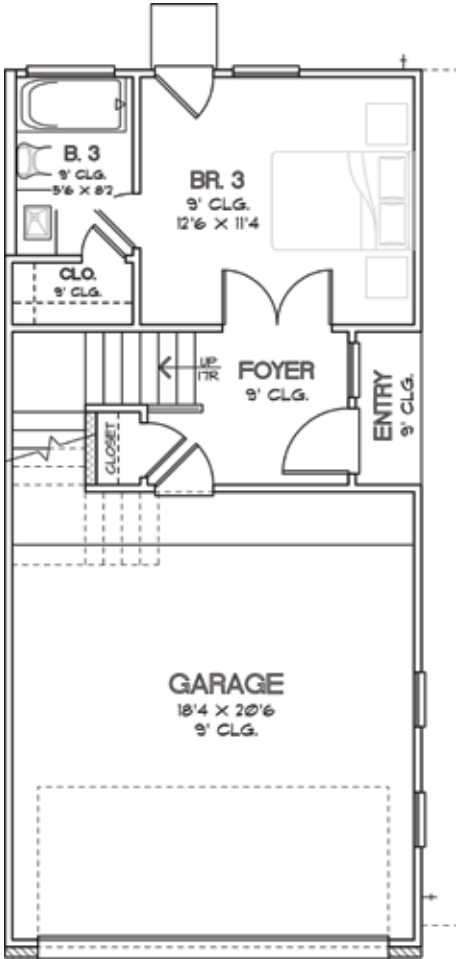
CHOICE IS THE ULTIMATE LUXURY



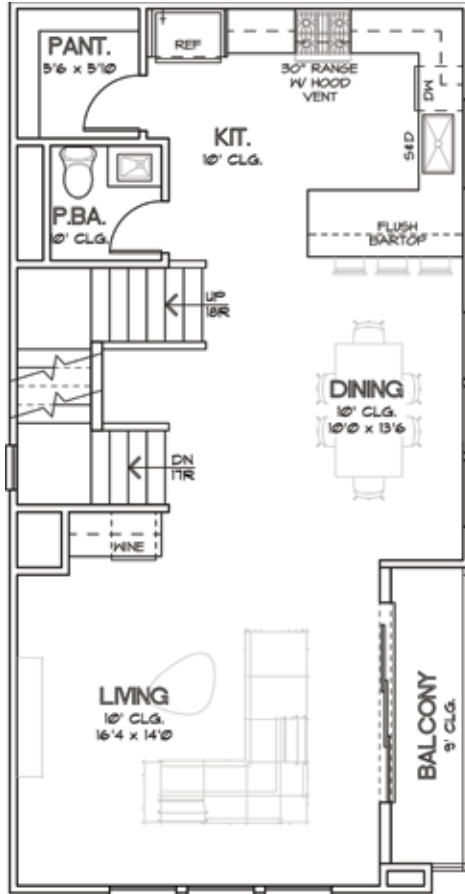
CITY HOMES  
CHOICE

# EASTWOOD PARK

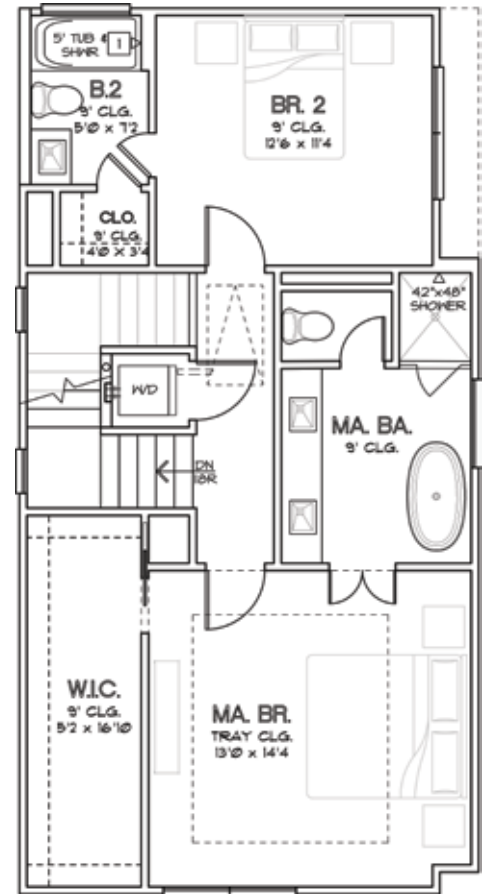
PLAN 1896



FIRST FLOOR



SECOND FLOOR



THIRD FLOOR

CHOICE IS THE ULTIMATE LUXURY



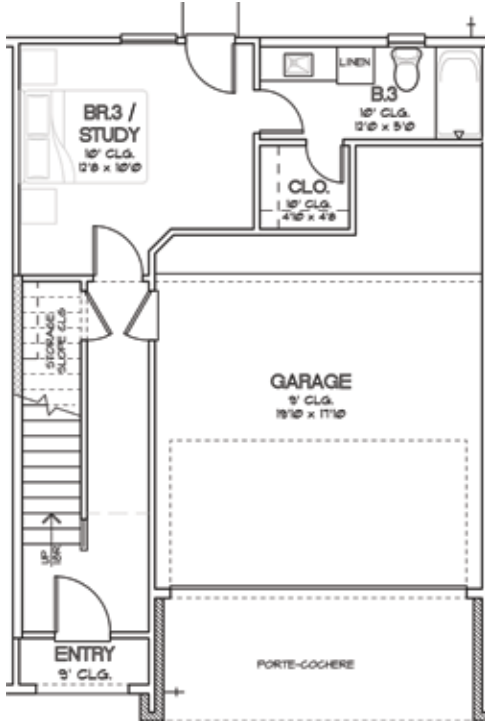




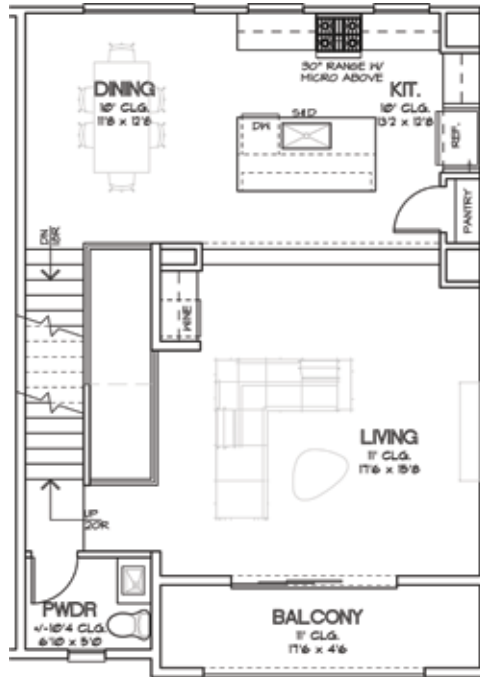
CITY HOMES  
CHOICE

# EASTWOOD PARK

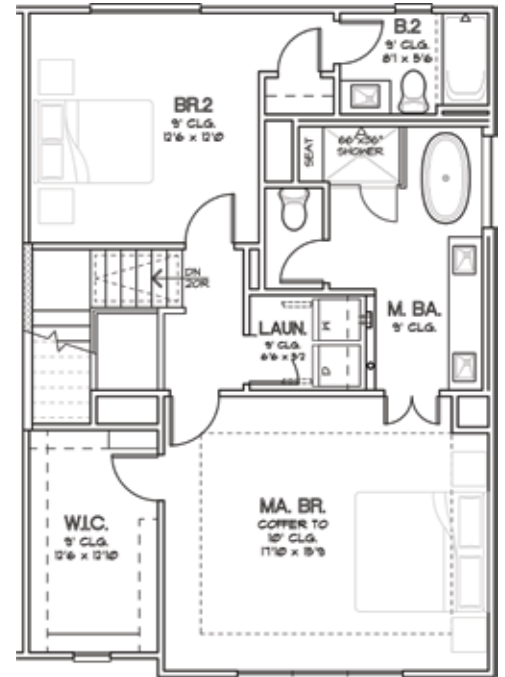
## PLAN 2103



FIRST FLOOR



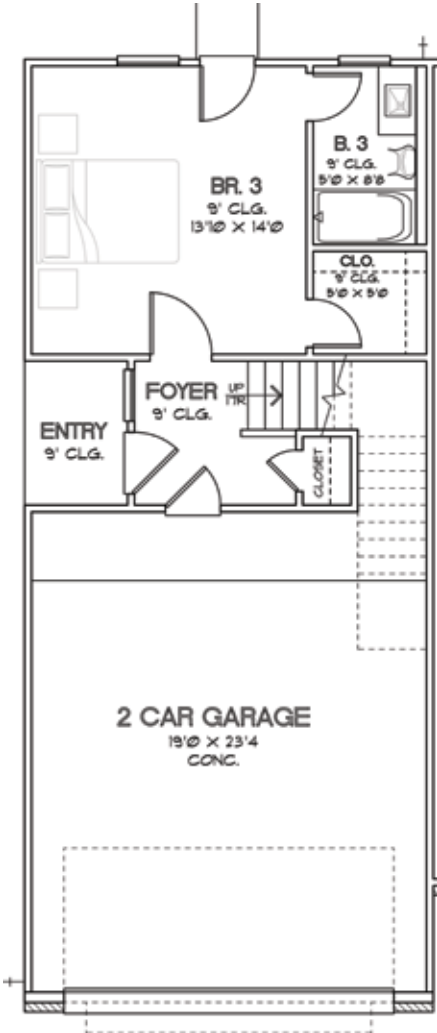
SECOND FLOOR



THIRD FLOOR

CHOICE IS THE ULTIMATE LUXURY

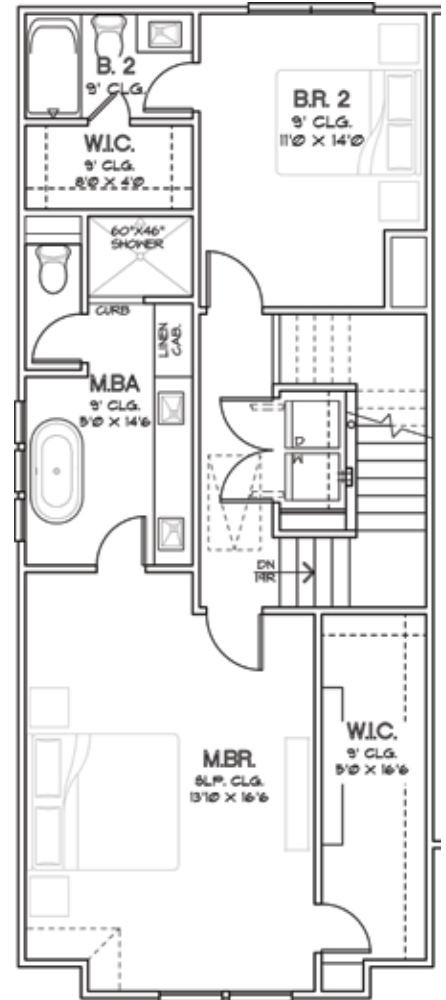




FIRST FLOOR



SECOND FLOOR



THIRD FLOOR

CHOICE IS THE ULTIMATE LUXURY



# EASTWOOD PARK

## FEATURES & SPECIFICATIONS

### FIRST FLOOR (ENTRY WAY, FIRST BEDROOM, FIRST BATHROOM)

- Engineered Swiss Flooring in Entry Hall
- Coat Closet
- First Bedroom with Engineered Swiss Flooring
- Designer Porcelain Floors in Bathroom and Shower
- Quartz Countertops
- Undermounted Sink
- Modern Chrome Plumbing Fixtures
- Laminate Wood Steps up to Second Floor

### SECOND FLOOR (KITCHEN, DINING, LIVING ROOM)

- Engineered Swiss Flooring throughout Second Floor
- Laminate Wood Treads
- Quartz Countertops
- Subway Tile Backsplash
- Shaker Cabinetry
- Powder Room with Pedestal Sink

### THIRD FLOOR

- Engineered Swiss Flooring in Hallways
- Laminate Wood Treads on Stairs/Risers

#### Master Bathroom

- Engineered Swiss Flooring
- Designer Porcelain Floors in Bathroom and Shower
- Free-Standing Soaking Tub
- Frameless Glass Shower
- Modern Chrome Plumbing Fixtures
- Undermounted Sink
- Quartz Countertops
- Mirrors
- Shaker Cabinetry

#### Secondary Bathroom

- Designer Porcelain Flooring and Paneling in Shower
- Quartz Countertops
- Undermounted Sink
- Modern Chrome Plumbing Fixtures
- Shaker Cabinetry

### MECHANICAL SPECIFICATIONS

#### Foundation

- Engineered Post Tension Foundation
- 3,000 PSI Concrete
- Engineered Building Pads

#### Frame and Cornice

- Engineered Structural Framing
- 2"x4" Stud Grade Fire Walls, Every 16" (+or-) O.C.
- Yellow Pine Ceiling Joints 16" (+or-) O.C.
- Yellow Pine Rafters, 16" (+or-) O.C.
- 7/16" OSB Roof Decking with TechShield Radiant Barrier
- 7/16" OSB Sheathing
- Engineered Wood Trusses Per Floor

- 3/4" Tongue and Groove Subfloor
- Cem Plank Siding
- All Subfloor is Glued, Nailed and Screwed
- Anthony Power Beams
- Windstorm Per Plans and Codes

#### Windows

- Vinyl Frame, Insulated (Double Pane), Clear Glass with Low-E

#### Ceiling Heights

- Varies from 9'-12' - See Floor Plan

#### Exterior

- HardiPlank siding or Hardi Stucco Board
- Sherwin Williams Conflex Elastomeric Coating
- 30-Year Roof Shingle

#### Air Conditioning and Heating

- 16 SEER System
- Name Brand Condensing Unit
- Name Brand Furnace
- R-8/6 Silver Flex Duct in Attic
- Programmable Thermostats

#### Electrical

- All Copper Wiring throughout the House
- GFI Safety Switches where Required by Codes
- 125 AMP Main Electric Panel
- All Other Electrical Wiring as Per Floor Plans
- Recessed Can Lighting

#### Plumbing

- CPVC Vents and Drain Pipes
- Black Steel Pipes for Gas
- Insulated Exposed Water Lines
- 40-Gallon Water Heater

#### Insulation

Area:	Material:	R-Value:	Thickness:
Exterior Walls	Batt	R-19	5"
Cold Floors	Batt	R-19	6.25"
Ceilings	Batt	R-19	5"
Attic	Blown	R-38	12"

#### Appliances

- Dishwasher: Samsung DW80M2020US
- Cooktop: Samsung NX58K3310SS
- Microwave: Samsung ME16K3000AS

CHOICE IS THE ULTIMATE LUXURY





CITY HOMES  
CHOICE

# EASTWOOD PARK

SITE PLAN



To learn more about this community, please contact:

**Michael Afshari** | 832.875.3252  
michael.afshari@compass.com

CHOICE IS THE ULTIMATE LUXURY

