



# COLONIAL HEIGHTS

A new community in Katy



**Paul Taylor | (713) 575-8000**

[pt@citychoicelgroup.com](mailto:pt@citychoicelgroup.com)

Please Visit Our Model Home: 1522 Colonial Junction Dr. Katy TX 77493

CHOICE IS THE ULTIMATE LUXURY





## COLONIAL HEIGHTS

QUICK MOVE-IN HOMES

### 1504 Colonial Gorge

~~\$364,700~~ **\$327,700**

3 beds | 2.5 baths | 2 car garage  
1,809 sq. ft.

AVAILABLE NOW

### 1506 Colonial Gorge

~~\$386,700~~ **\$334,900**

4 beds | 2.5 baths | 2 car garage  
1,861 sq. ft.

AVAILABLE NOW

### 1508 Colonial Gorge

~~\$383,700~~ **\$331,700**

4 beds | 2.5 baths | 2 car garage  
1,855 sq. ft.

AVAILABLE NOW

### 1510 Colonial Gorge

~~\$389,700~~ **\$337,900**

3 beds | 2.5 baths | 2 car garage  
1,916 sq. ft.

AVAILABLE NOW

### 1512 Colonial Gorge

~~\$394,700~~ **\$339,900**

3 beds | 2.5 baths | 2 car garage  
1,931 sq. ft.

AVAILABLE NOW

### 1514 Colonial Gorge

~~\$384,700~~ **\$334,900**

4 beds | 2.5 baths | 2 car garage  
1,861 sq. ft.

AVAILABLE NOW

### 1516 Colonial Gorge

~~\$381,700~~ **\$330,700**

4 beds | 2.5 baths | 2 car garage  
1,844 sq. ft.

AVAILABLE NOW

### 1524 Colonial Junction

~~\$388,700~~ **\$334,900**

3 beds | 2.5 baths | 2 car garage  
1,916 sq. ft.

AVAILABLE NOW

### 1526 Colonial Junction

~~\$391,700~~ **\$334,900**

3 beds | 2.5 baths | 2 car garage  
1,931 sq. ft.

AVAILABLE NOW

continued

**Paul Taylor | (713) 575-8000**

pt@citychoicegroup.com

Please Visit Our Model Home: 1522 Colonial Junction Dr. Katy TX 77493

CHOICE IS THE ULTIMATE LUXURY





## COLONIAL HEIGHTS

QUICK MOVE-IN HOMES

### 24402 Colonial Willow

~~\$379,700~~ **\$337,000**

3 beds | 2.5 baths | 2 car garage  
1,877 sq. ft.

AVAILABLE NOW

### 24404 Colonial Willow

~~\$367,700~~ **\$309,900**

3 beds | 2.5 baths | 2 car garage  
1,809 sq. ft.

AVAILABLE NOW

### 24403 Colonial Willow

~~\$383,700~~ **\$334,700**

4 beds | 2.5 baths | 2 car garage  
1,844 sq. ft.

AVAILABLE NOW

### 24405 Colonial Willow

~~\$383,700~~ **\$334,900**

4 beds | 2.5 baths | 2 car garage  
1,861 sq. ft.

AVAILABLE NOW

### 1518 Colonial Gorge

~~\$389,700~~ **\$337,900**

3 beds | 2.5 baths | 2 car garage  
1,916 sq. ft.

AVAILABLE NOW

### 1520 Colonial Gorge

~~\$392,700~~ **\$339,900**

3 beds | 2.5 baths | 2 car garage  
1,931 sq. ft.

AVAILABLE NOW

### 1522 Colonial Gorge

~~\$384,700~~ **\$327,900**

4 beds | 2.5 baths | 2 car garage  
1,861 sq. ft.

AVAILABLE NOW

### 1524 Colonial Gorge

~~\$379,700~~ **\$337,900**

4 beds | 2.5 baths | 2 car garage  
1,855 sq. ft.

AVAILABLE NOW

### 24403 Colonial Mound

~~\$379,700~~ **\$337,000**

3 beds | 3.0 baths | 2 car garage  
1,877 sq. ft.

AVAILABLE NOW

**Paul Taylor | (713) 575-8000**

pt@citychoicelgroup.com

Please Visit Our Model Home: 1522 Colonial Junction Dr. Katy TX 77493

continued

CHOICE IS THE ULTIMATE LUXURY





## COLONIAL HEIGHTS

QUICK MOVE-IN HOMES

---

**24408 Colonial Willow**  
~~\$389,900~~ **\$321,900**

3 beds | 3.5 baths | 2 car garage  
1,931 sq. ft.

---

---

**24407 Colonial Willow**  
~~\$394,700~~ **\$342,900**

3 beds | 2.5 baths | 2 car garage  
1,931 sq. ft.

---

---

**24409 Colonial Willow**  
~~\$392,900~~ **\$339,900**

3 beds | 2.5 baths | 2 car garage  
1,916 sq. ft.

---

---

**24410 Colonial Willow**  
~~\$367,700~~ **\$312,900**

3 beds | 2.5 baths | 2 car garage  
1,809 sq. ft.

---

---

**24412 Colonial Willow**  
~~\$339,900~~ **\$279,900**

3 beds | 2.5 baths | 2 car garage  
1,516 sq. ft.

---

---

**24411 Colonial Willow**  
~~\$367,700~~ **\$309,900**

3 beds | 2.5 baths | 2 car garage  
1,809 sq. ft.

---

---

**24413 Colonial Willow**  
~~\$342,700~~ **\$284,900**

3 beds | 2.5 baths | 2 car garage  
1,516 sq. ft.

---

---

**24405 Colonial Mound**  
~~\$367,700~~ **\$317,700**

3 beds | 2.5 baths | 2 car garage  
1,809 sq. ft.

---

---

**24406 Colonial Willow**  
~~\$387,700~~ **\$319,900**

3 beds | 2.5 baths | 2 car garage  
1,916 sq. ft.

---

**Paul Taylor | (713) 575-8000**

[pt@citychoicengroup.com](mailto:pt@citychoicengroup.com)

Please Visit Our Model Home: 1522 Colonial Junction Dr. Katy TX 77493

CHOICE IS THE ULTIMATE LUXURY







CITY HOMES  
CHOICE



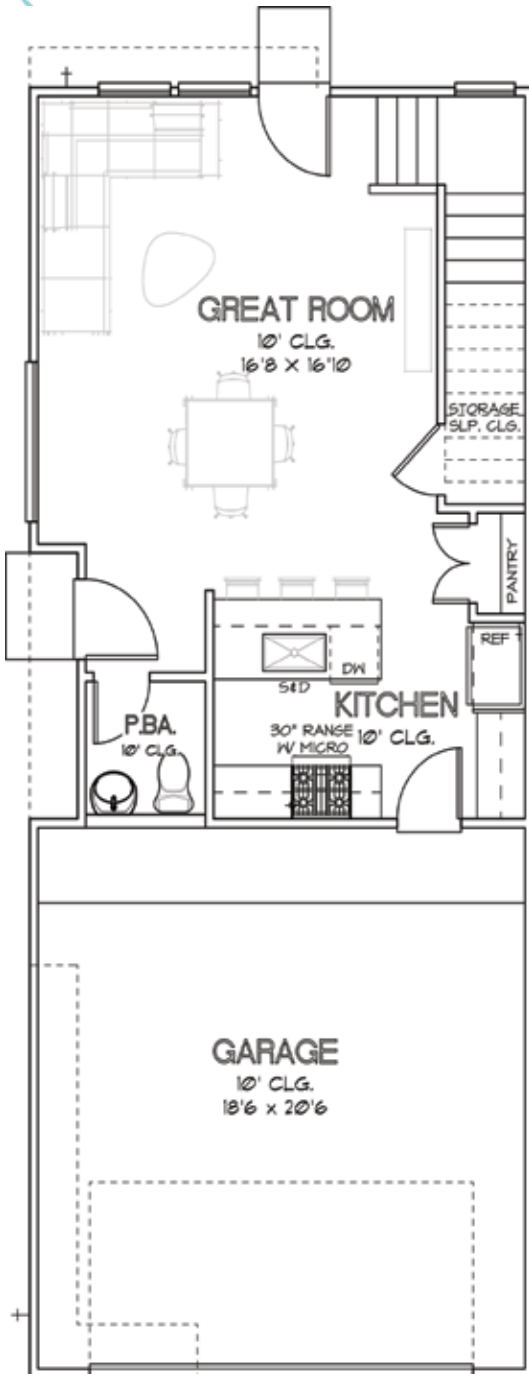
**Paul Taylor**  
**(713) 575-8000**  
pt@citychoicegroup.com  
Please Visit Our Model Home:  
1522 Colonial Junction Dr.  
Katy TX 77493

CHOICE IS THE ULTIMATE LUXURY

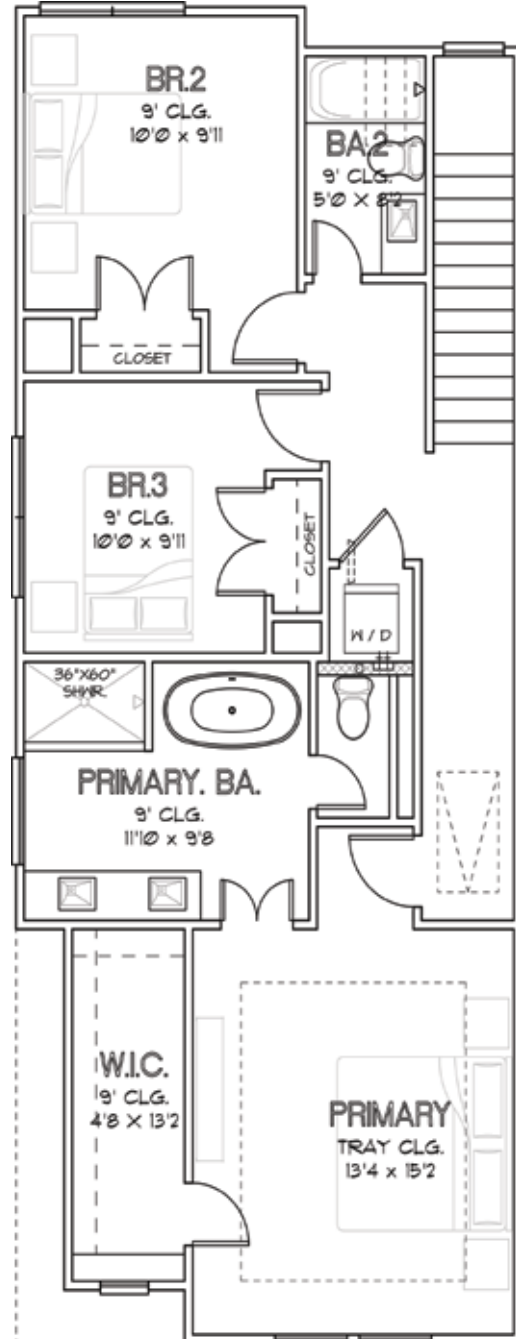


# COLONIAL HEIGHTS

PLAN 1504  
1,504 SQ.FT.

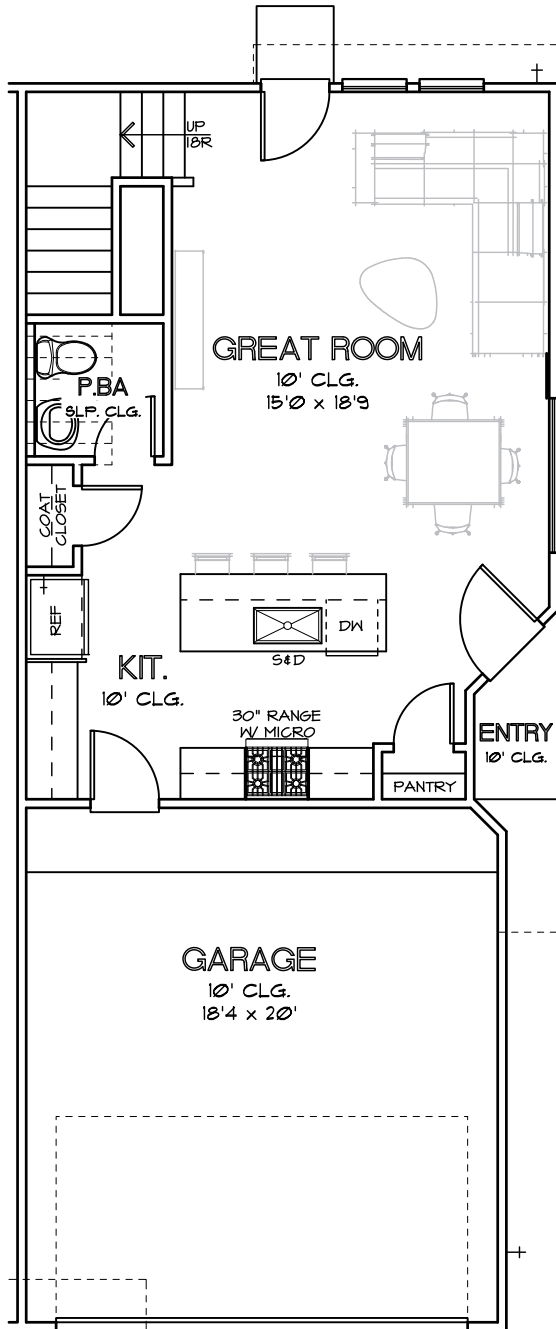


FIRST FLOOR

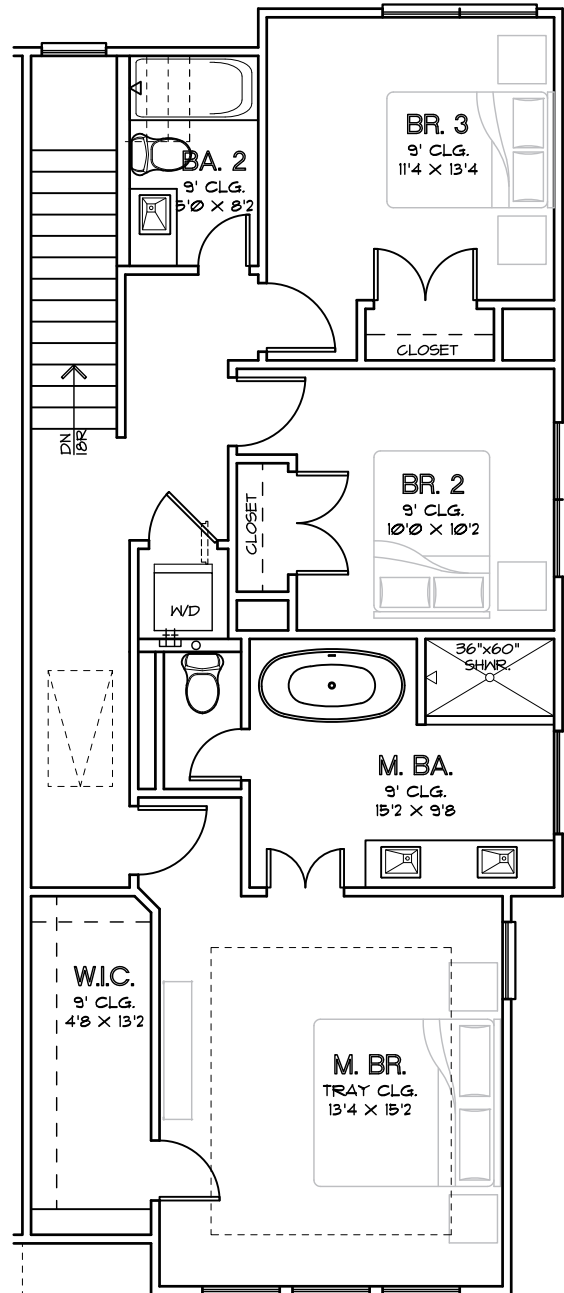


SECOND FLOOR

CHOICE IS THE ULTIMATE LUXURY



FIRST FLOOR



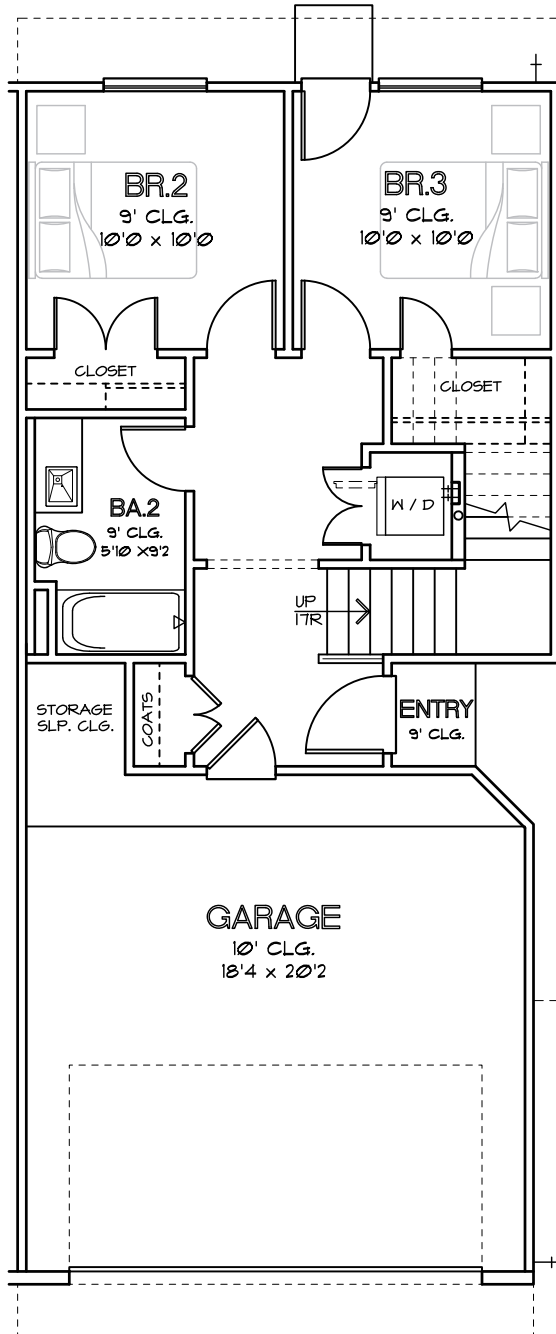
SECOND FLOOR

CHOICE IS THE ULTIMATE LUXURY

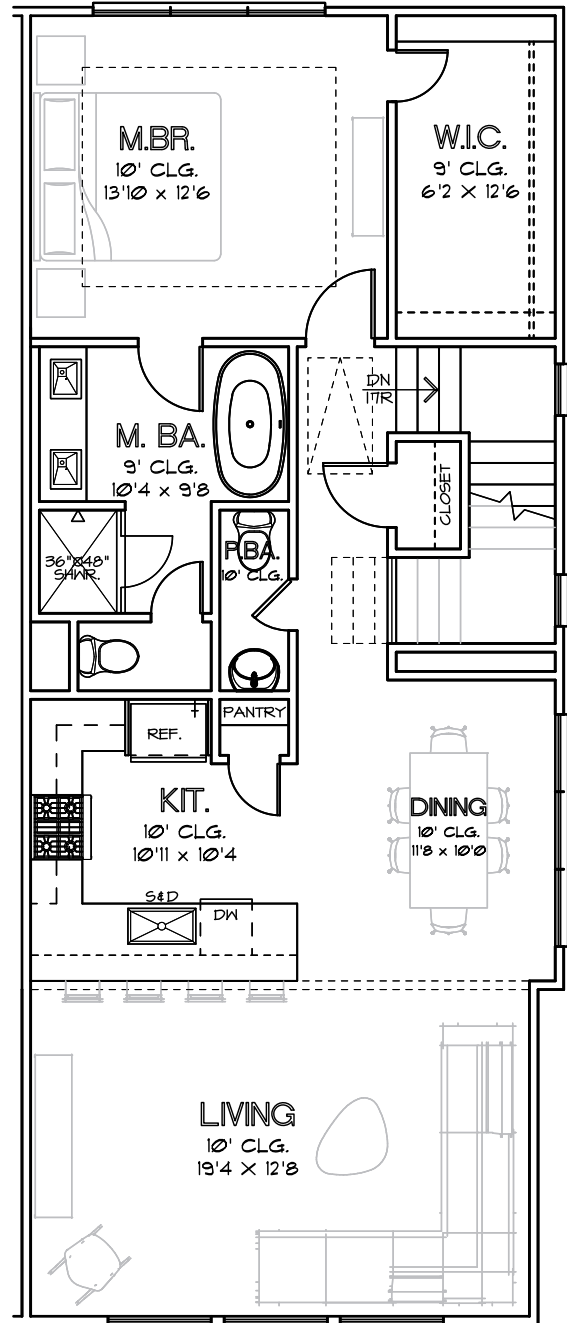
# COLONIAL HEIGHTS

## PLAN 1516

1,516 SQ.FT.



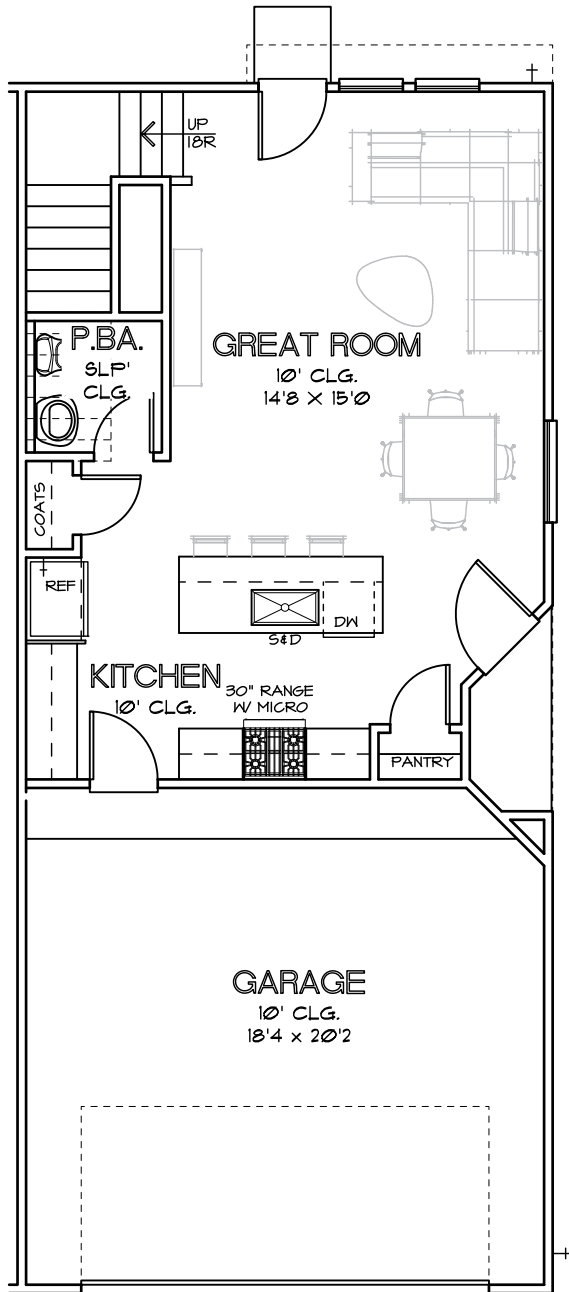
FIRST FLOOR



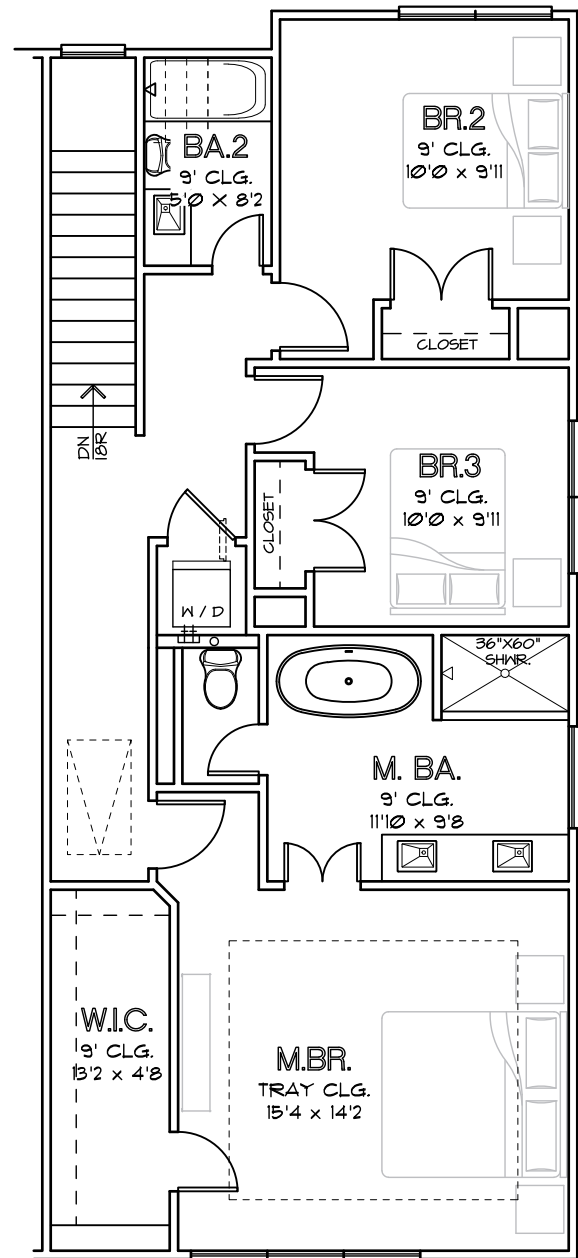
SECOND FLOOR

CHOICE IS THE ULTIMATE LUXURY





FIRST FLOOR



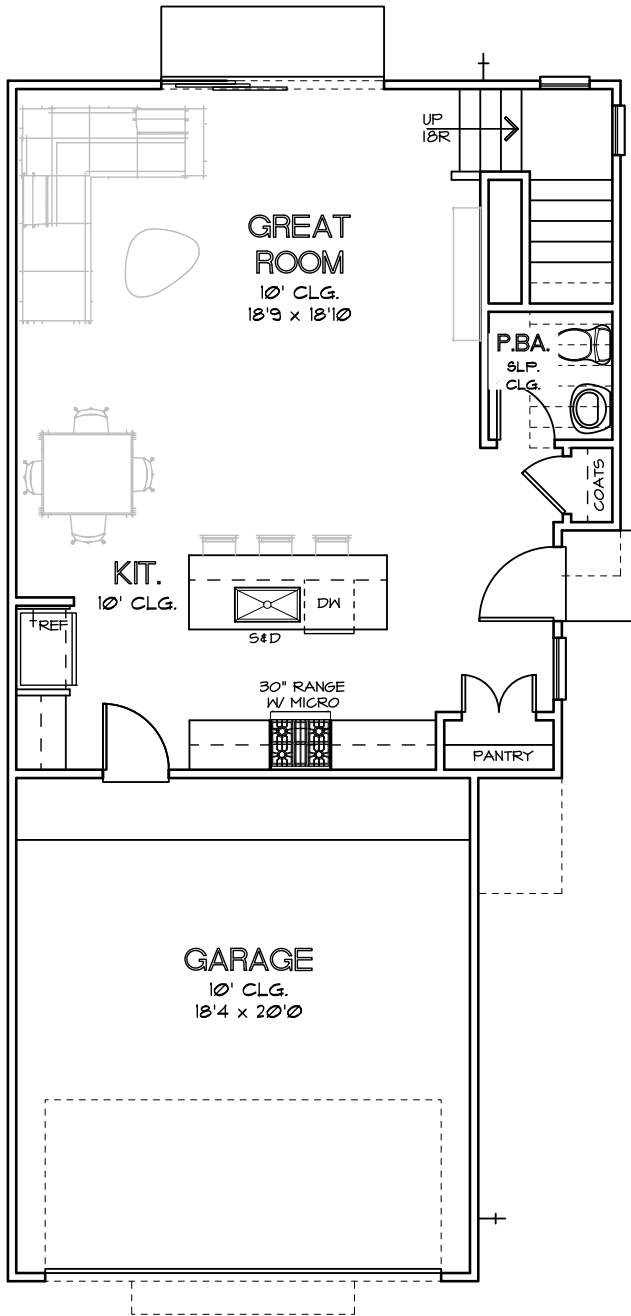
SECOND FLOOR

CHOICE IS THE ULTIMATE LUXURY

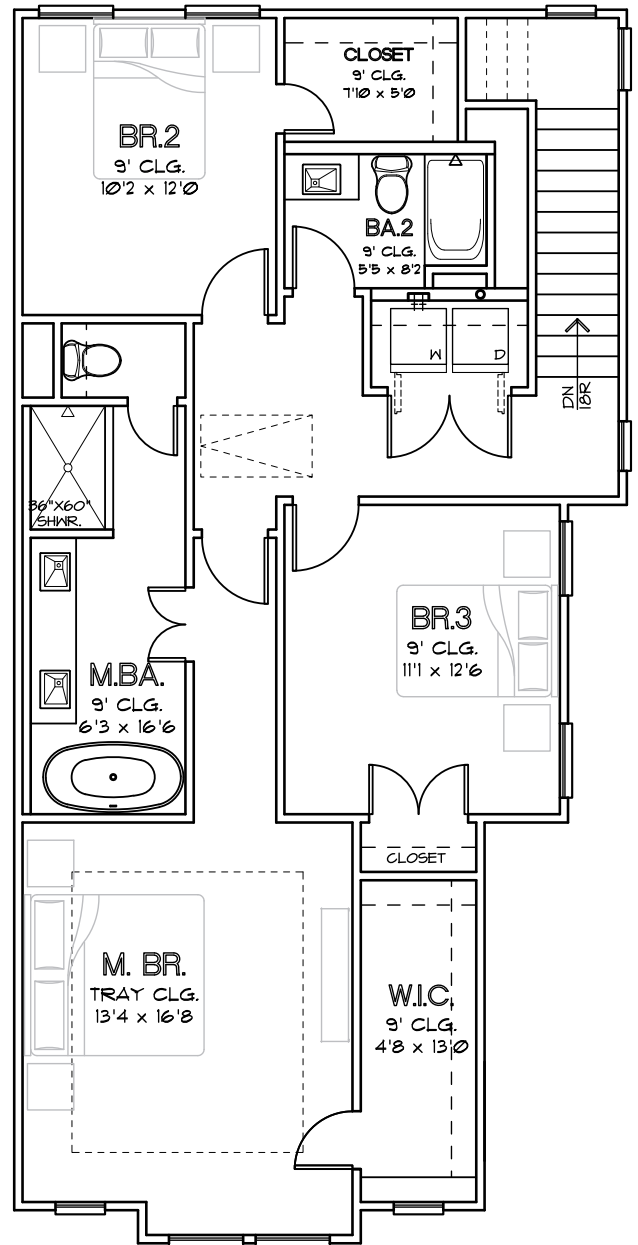
# COLONIAL HEIGHTS

## PLAN 1700

1,700 SQ.FT.



FIRST FLOOR



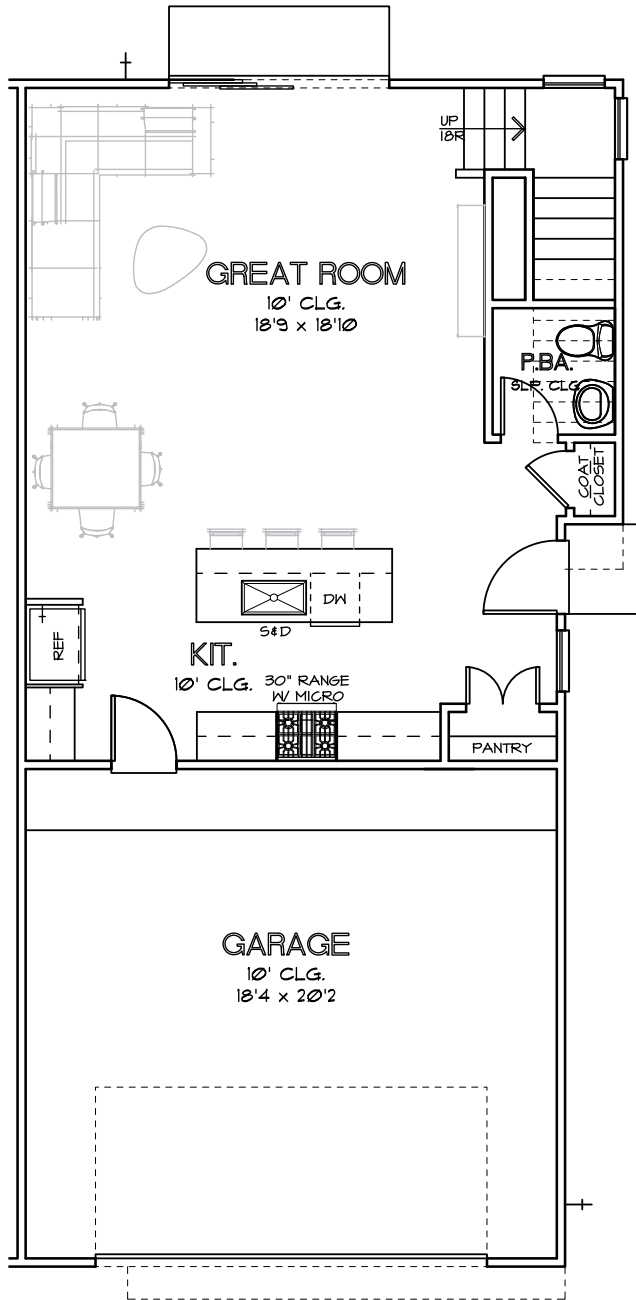
SECOND FLOOR

CHOICE IS THE ULTIMATE LUXURY

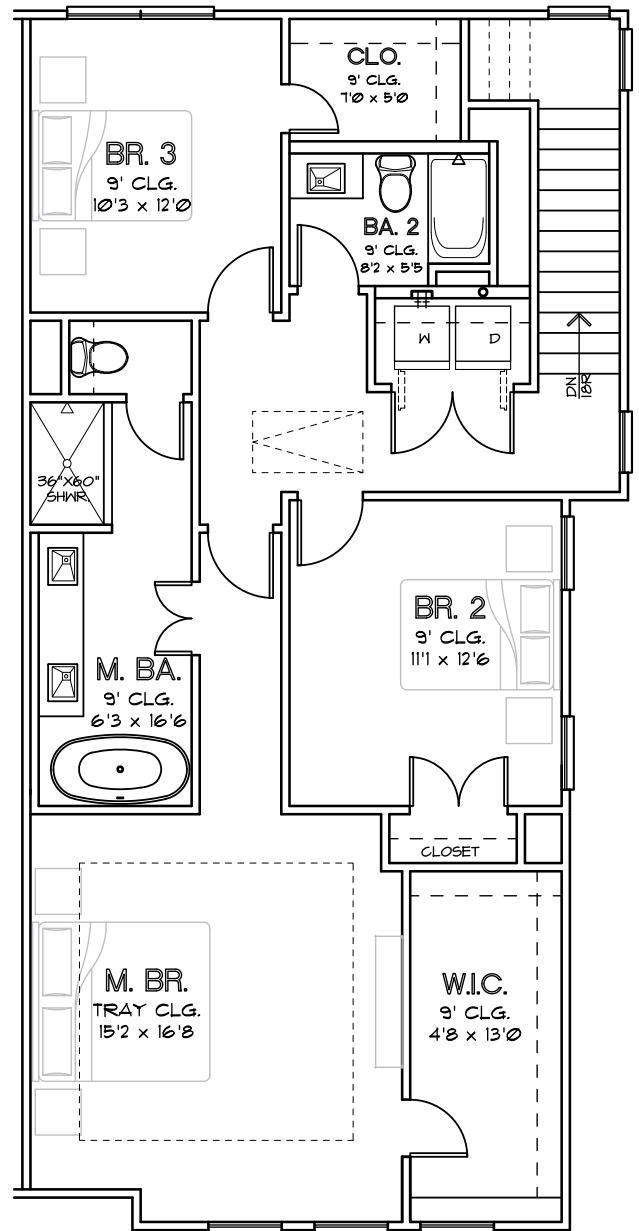
# COLONIAL HEIGHTS

## PLAN 1765

1,765 SQ.FT.

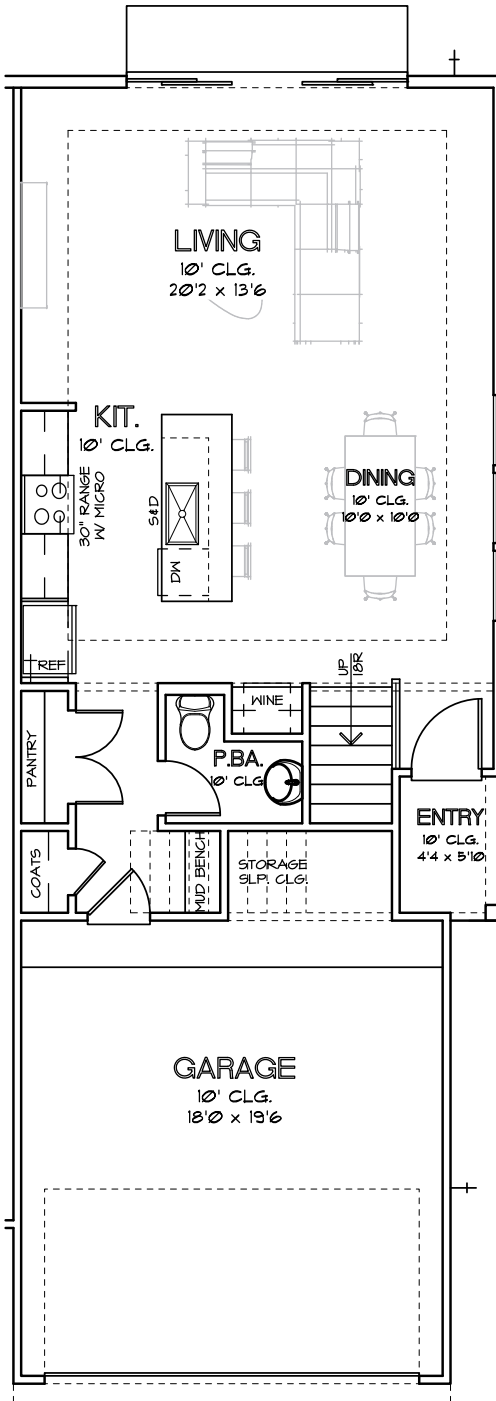


FIRST FLOOR

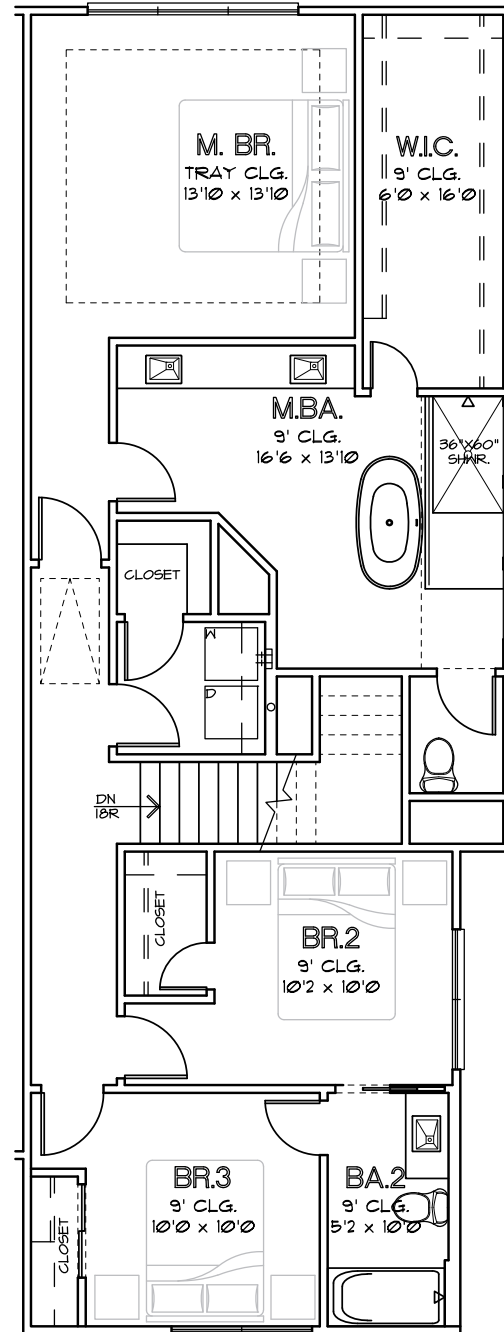


SECOND FLOOR

CHOICE IS THE ULTIMATE LUXURY

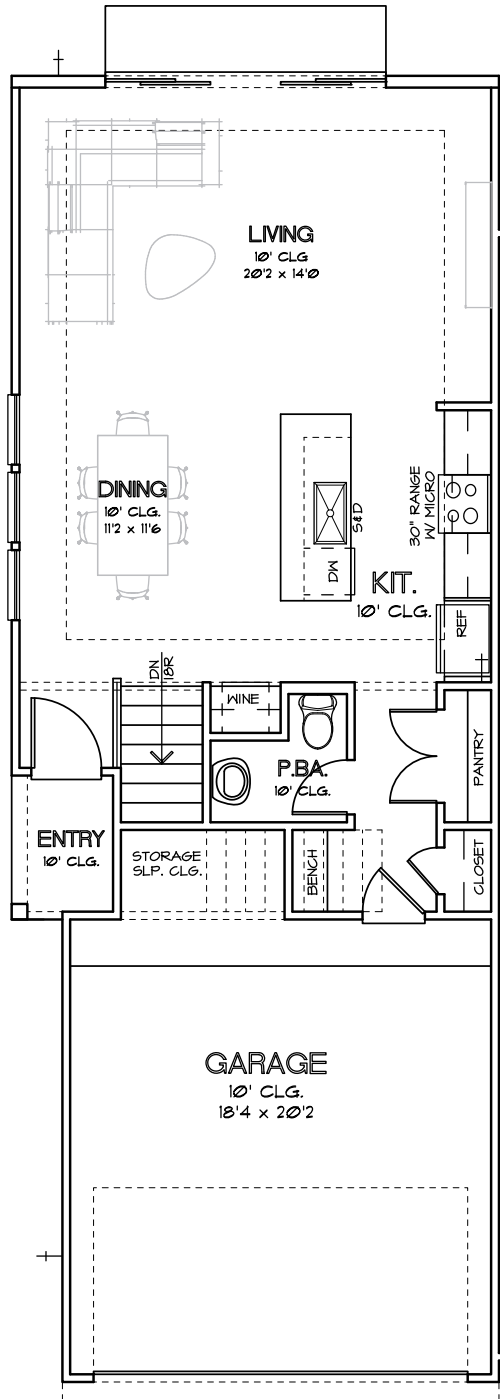


FIRST FLOOR

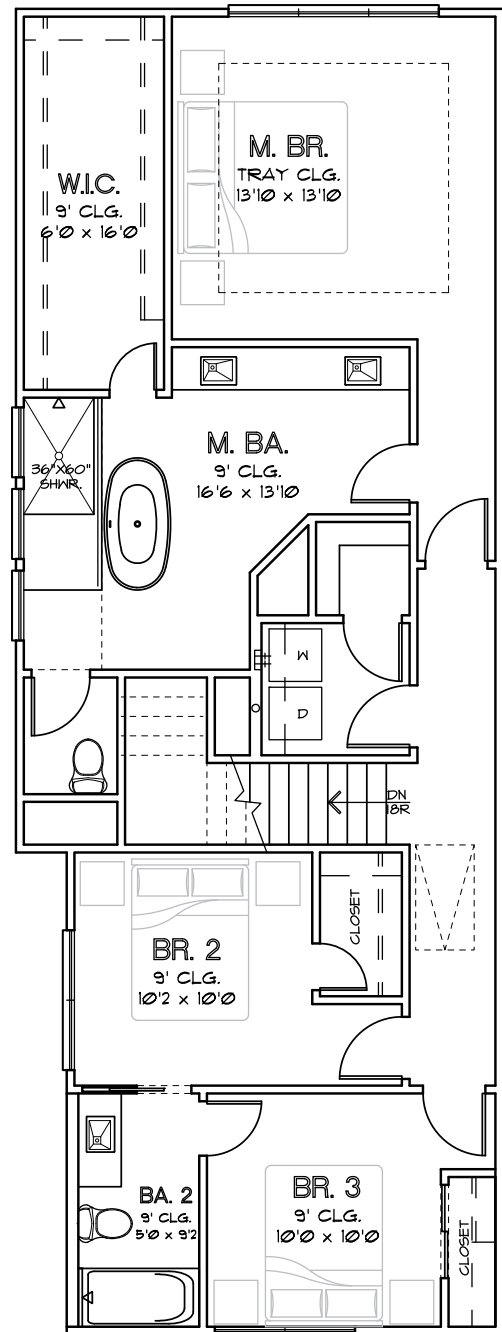


SECOND FLOOR

CHOICE IS THE ULTIMATE LUXURY



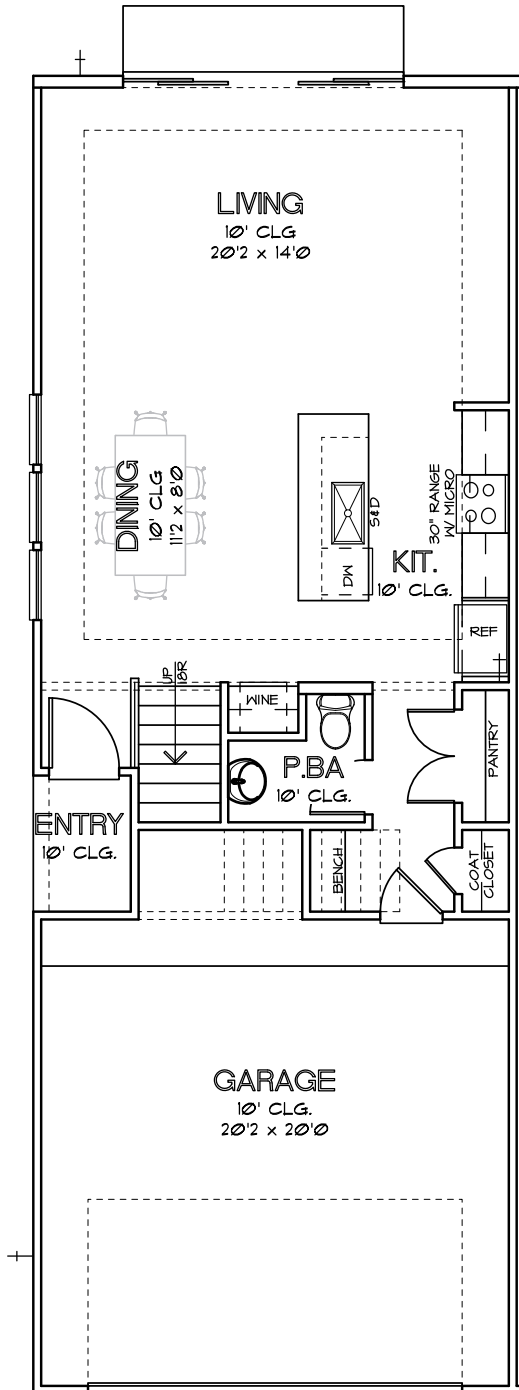
FIRST FLOOR



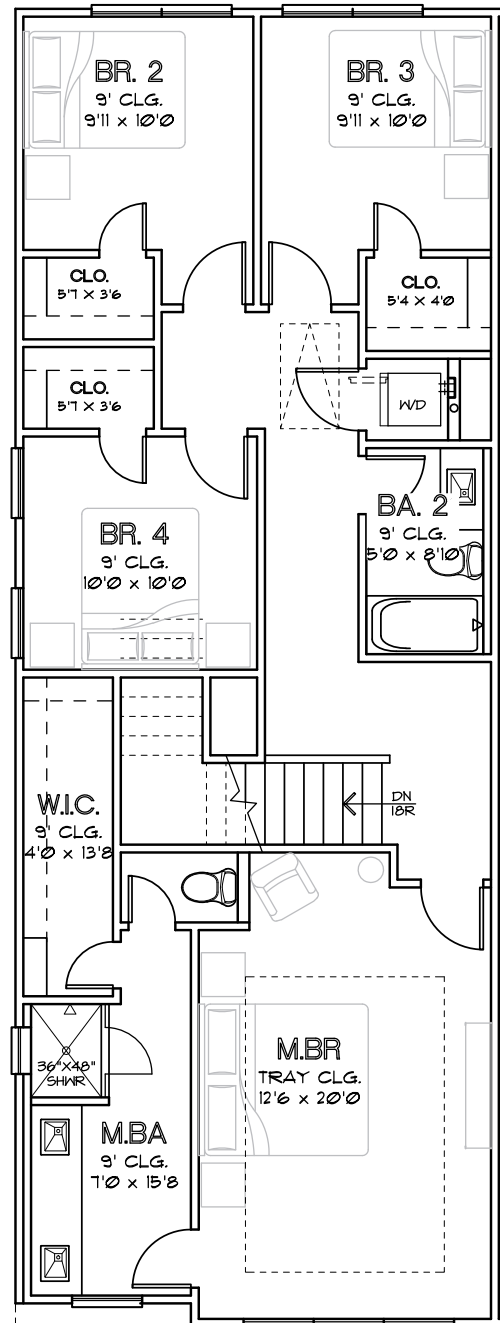
SECOND FLOOR

CHOICE IS THE ULTIMATE LUXURY



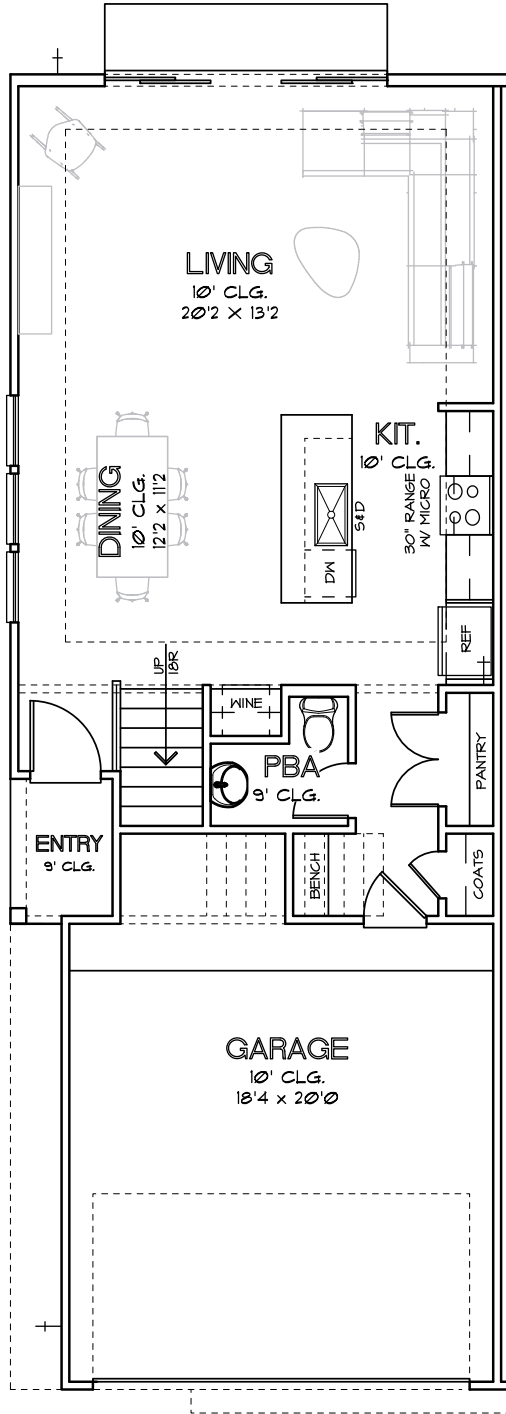


FIRST FLOOR

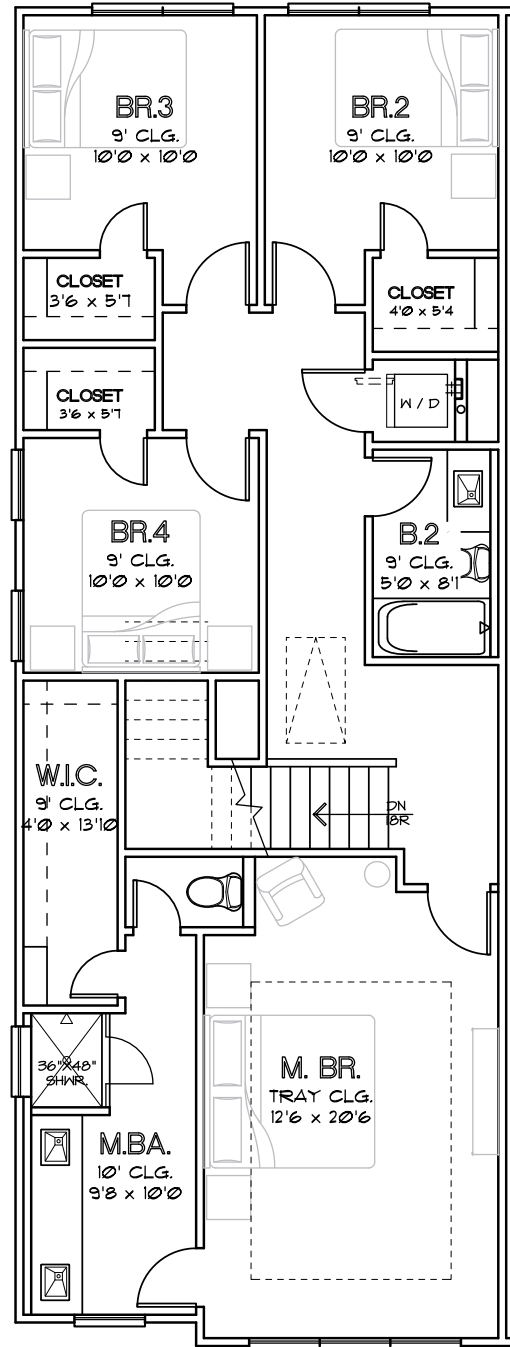


SECOND FLOOR

CHOICE IS THE ULTIMATE LUXURY



FIRST FLOOR

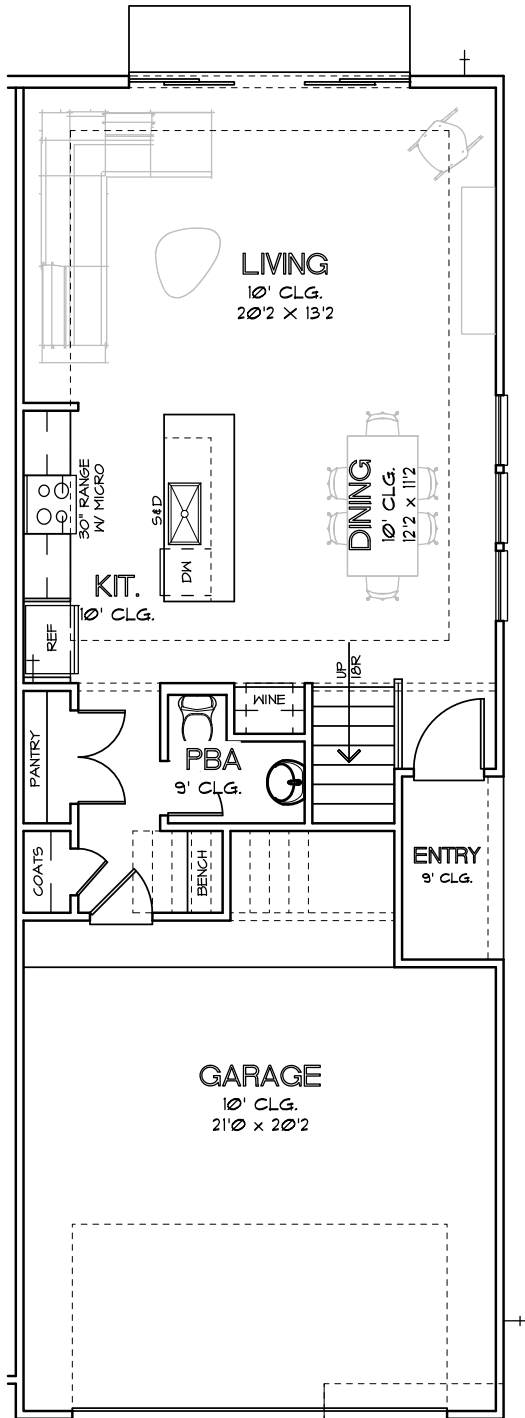


SECOND FLOOR

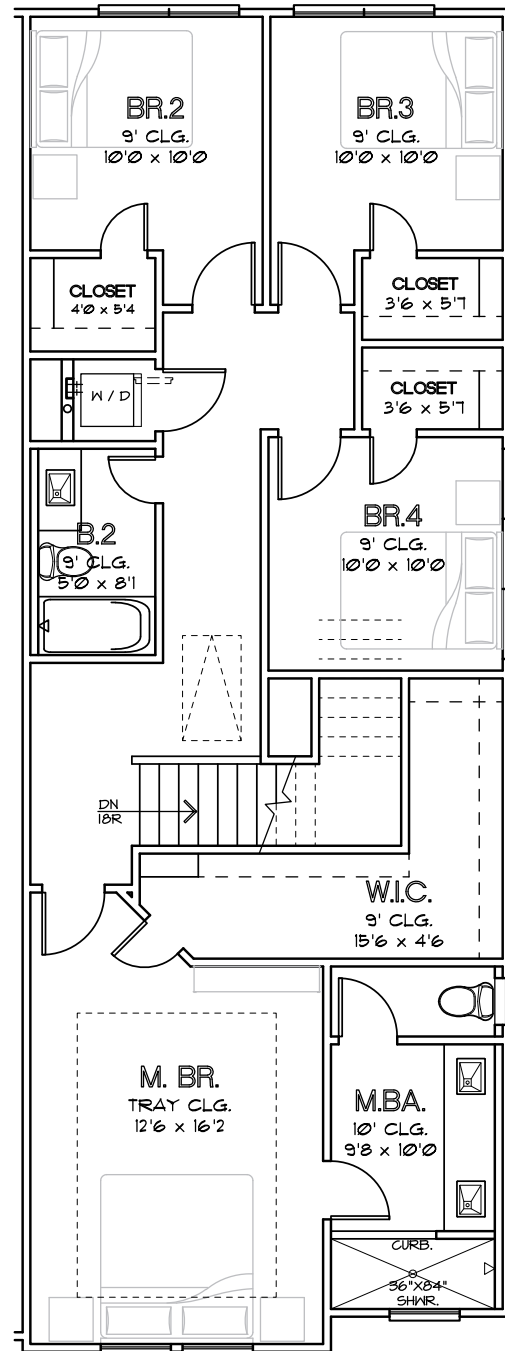
CHOICE IS THE ULTIMATE LUXURY

# COLONIAL HEIGHTS

PLAN 1861  
1,861 SQ.FT.

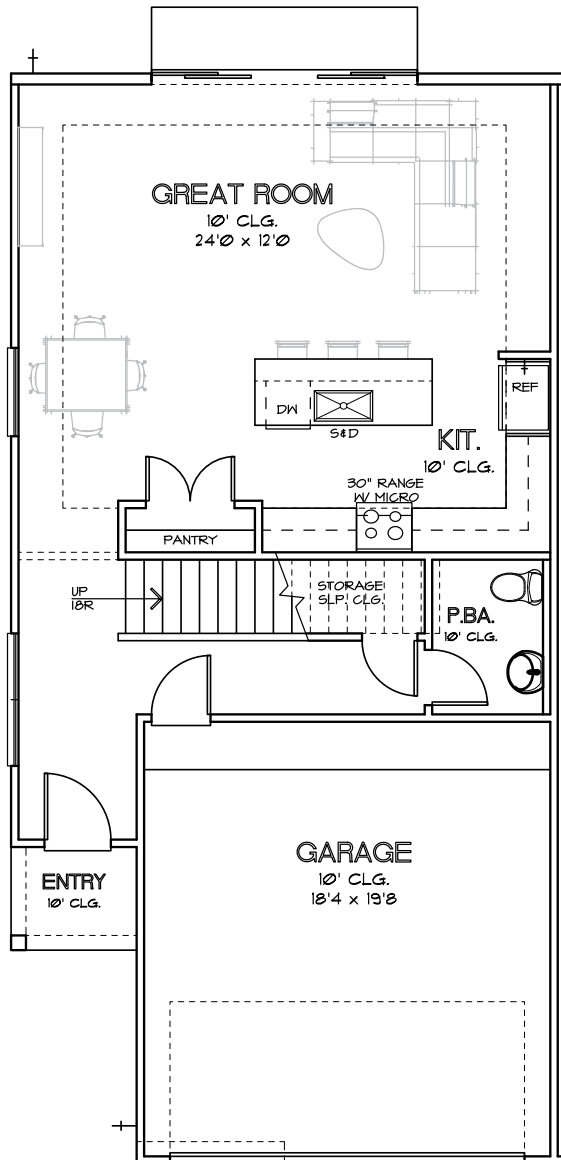


FIRST FLOOR

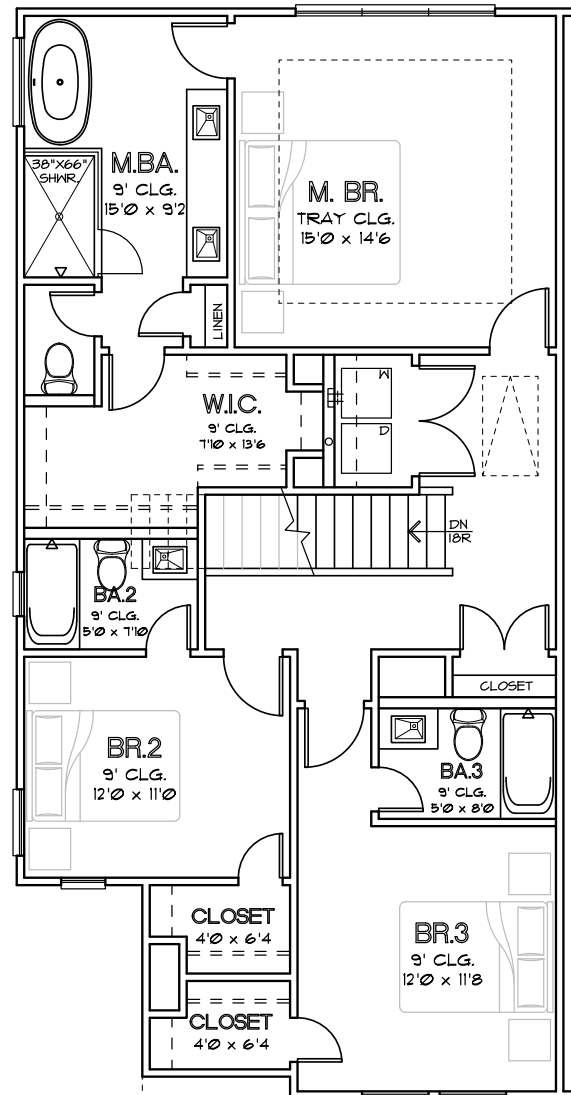


SECOND FLOOR

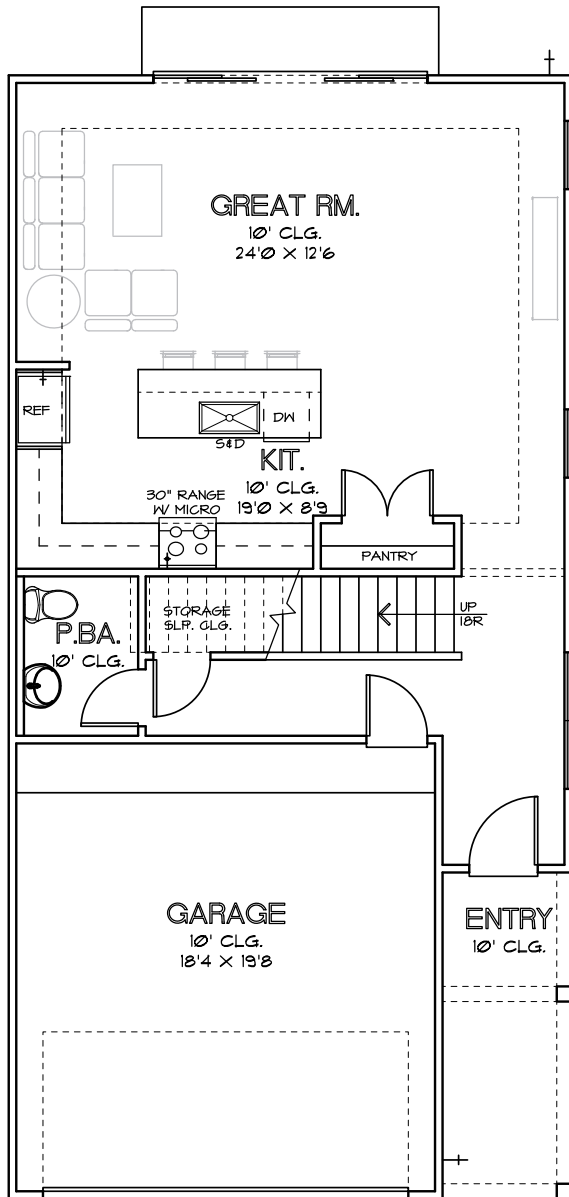
CHOICE IS THE ULTIMATE LUXURY



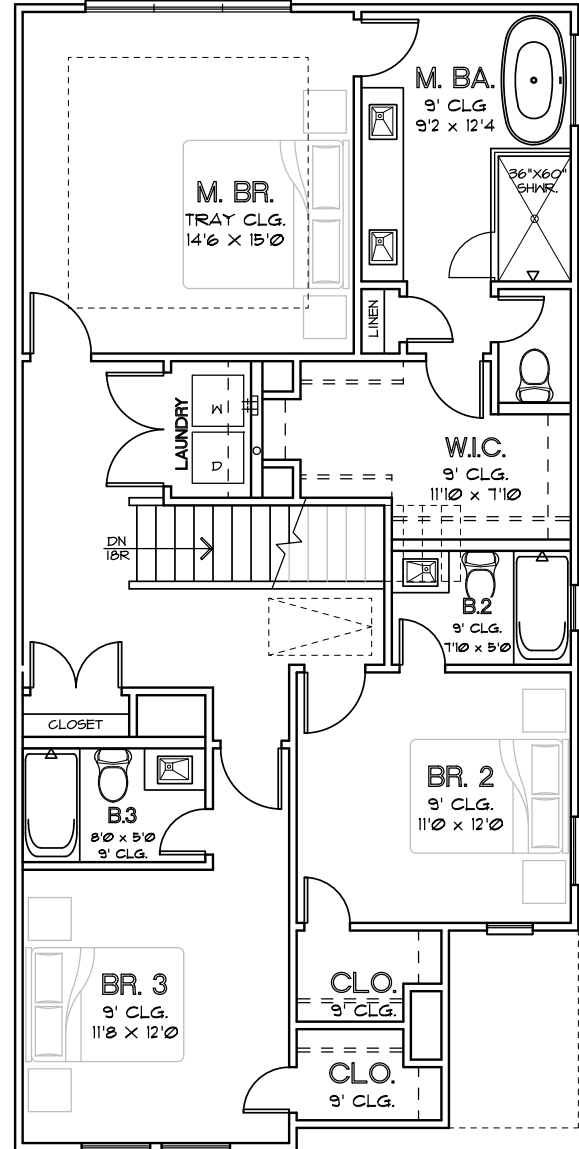
FIRST FLOOR



SECOND FLOOR



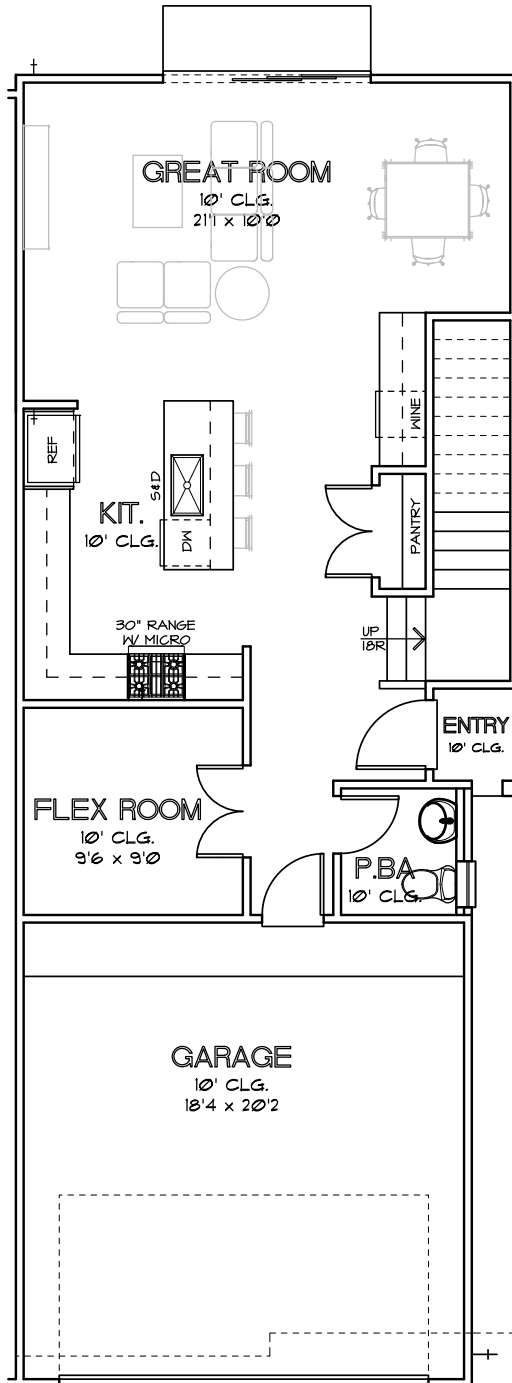
FIRST FLOOR



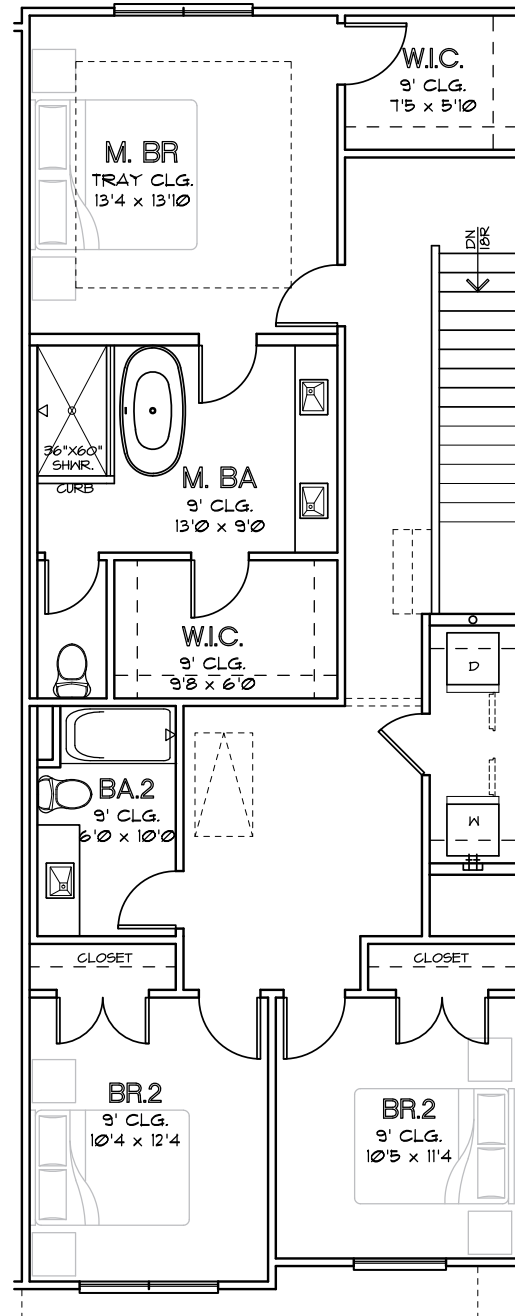
SECOND FLOOR

CHOICE IS THE ULTIMATE LUXURY



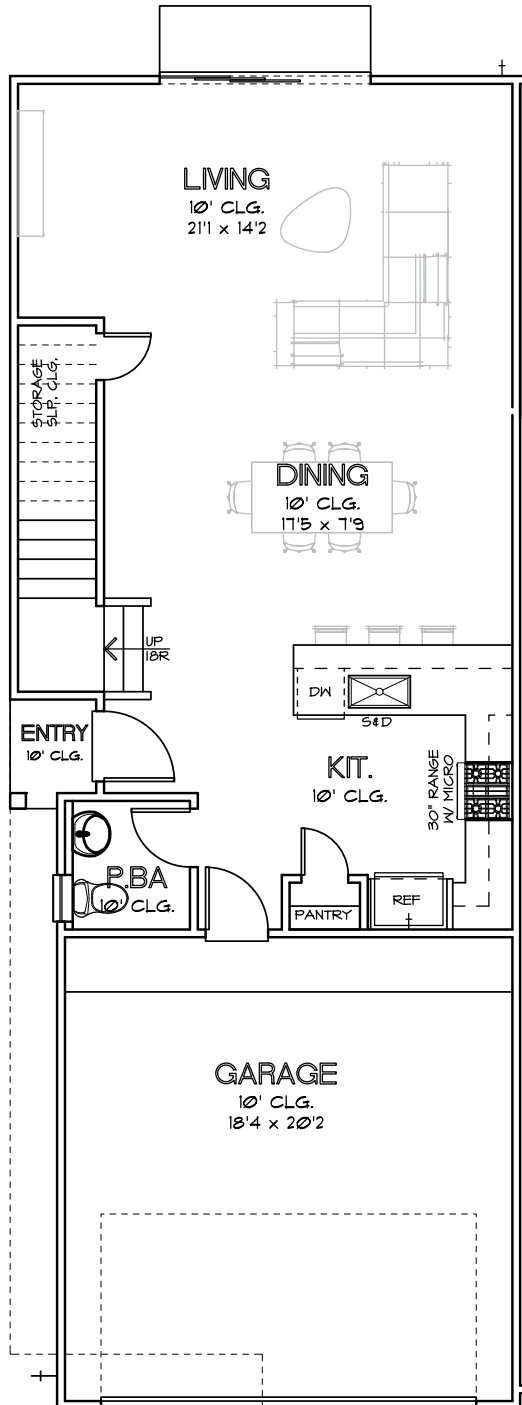


FIRST FLOOR

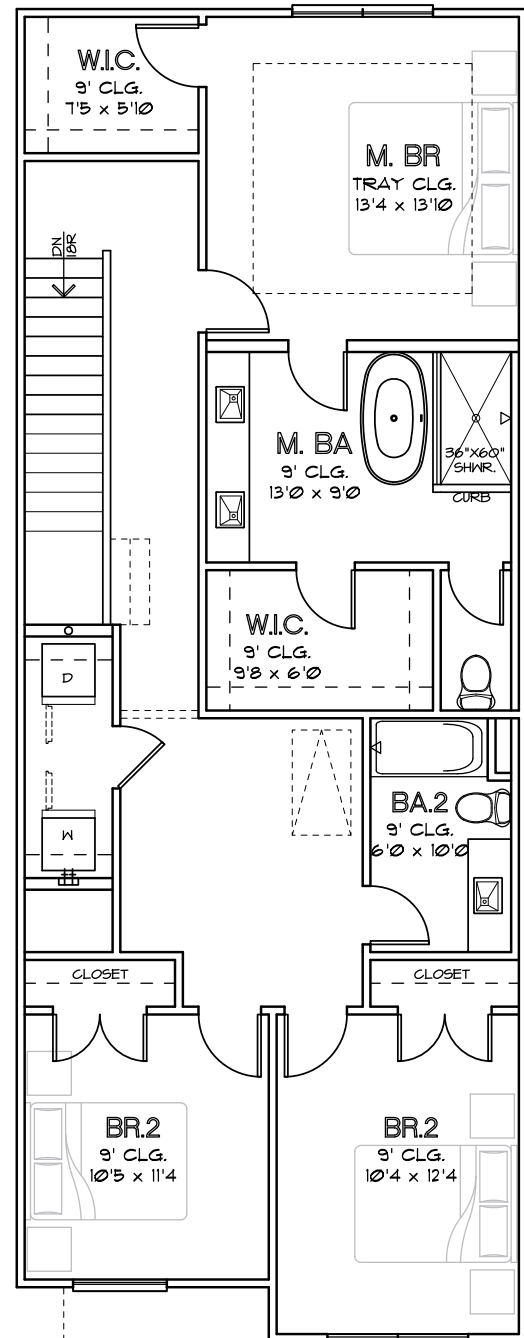


SECOND FLOOR

CHOICE IS THE ULTIMATE LUXURY

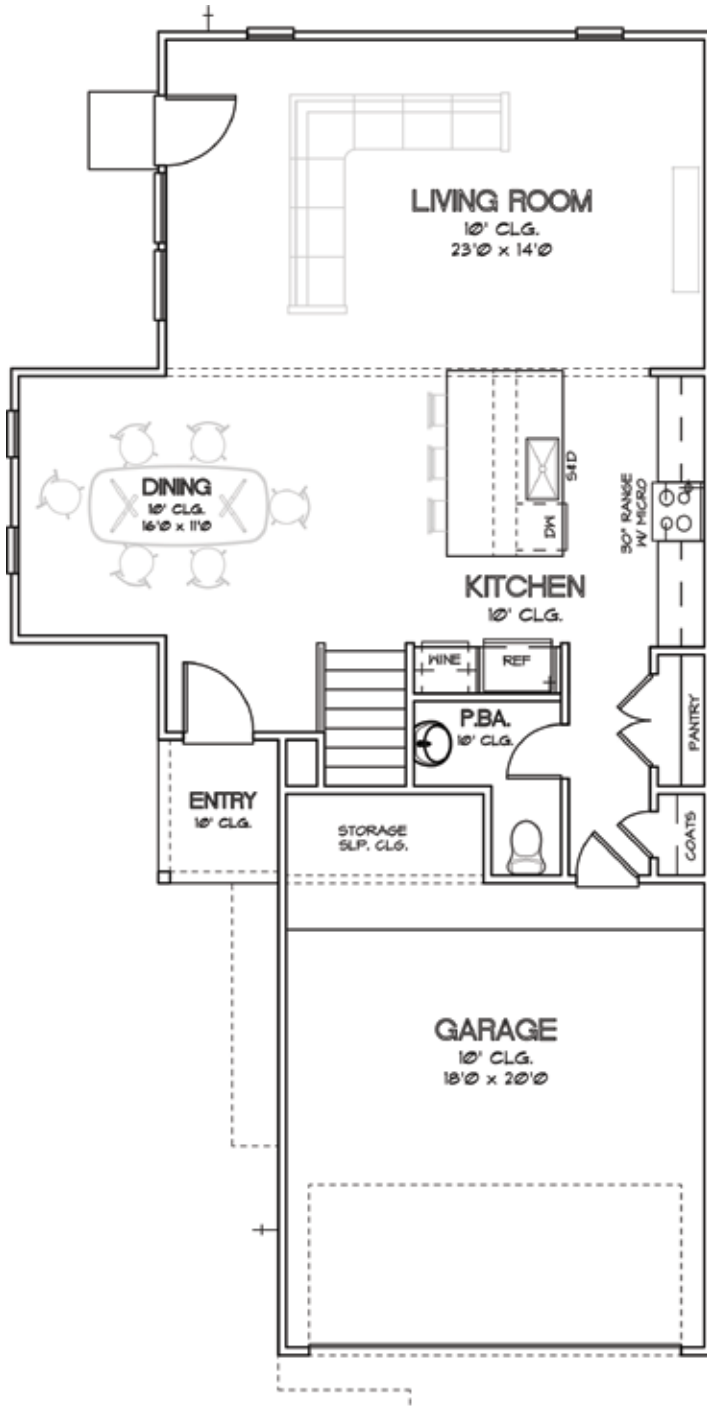


FIRST FLOOR

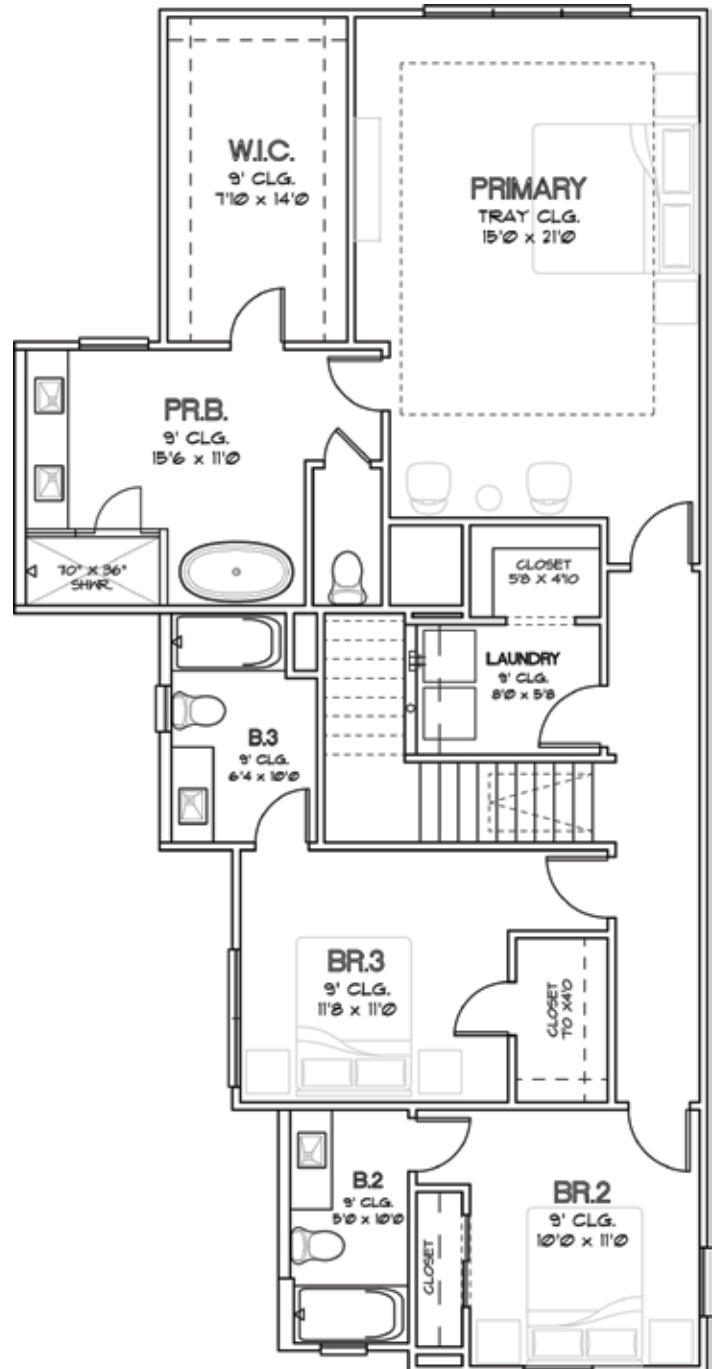


SECOND FLOOR

CHOICE IS THE ULTIMATE LUXURY



FIRST FLOOR



SECOND FLOOR



# COLONIAL HEIGHTS

## FEATURES & SPECIFICATIONS

### FIRST FLOOR (KITCHEN, DINING, LIVING ROOM):

- Engineered Swiss Flooring throughout First Floor
- Engineered Swiss Treads on Stairs
- Quartz Countertops
- Backsplash, White Subway Tile Backsplash
- Shaker Cabinets
- Powder Room with Pedestal Sink

### SECOND FLOOR (BEDROOMS):

- Designer Plush Carpet with Padding

#### Master Bathroom:

- Tile, Bath & Shower Tile
- Freestanding Soaking Tub in All Units
- Glass Enclosed Shower
- Modern Chrome Plumbing Fixtures
- Undermount Dual Sink
- Quartz Countertops
- Shaker Cabinets

#### Secondary Bathroom:

- Tile Flooring in Shower
- Quartz Countertops
- Undermount Sink
- Modern Chrome Plumbing Fixtures
- Shaker-Style Cabinets
- Tub/Shower Combo

### MECHANICAL SPECIFICATIONS:

#### Foundation:

- Engineered Post Tension Foundation
- 3,000 PSI Concrete
- Engineered Building Pads

#### Frame and Cornice:

- Engineered Structural Framing
- 2"x4" Stud Grade Fire Walls, Every 16" (+or-) O.C.
- Yellow Pine Ceiling Joints 16" (+or-) O.C.
- Yellow Pine Rafters, 16" (+or-) O.C.
- 7/16" OSB Roof Decking with TechShield Radiant Barrier
- 7/16" OSB Sheathing
- Engineered Wood Trusses per Floor
- 3/4" Tongue and Groove Subfloor
- Cem Plank Siding
- All Subfloor is Glued, Nailed and Screwed
- Windstorm per Plans and Codes

#### Windows:

- Vinyl/Aluminum Frame, Insulated (Double Pane), Clear Glass with Low-E

#### Ceiling Heights:

- Varies by Floor Plan

#### Roofing:

- 25 Year Roof Shingle

#### Air Conditioning and Heating:

- 3 Ton A/C on Smaller Plans (<1600 sf)
- 3.5 Ton A/C on Larger Plans (>1700 sf)
- High-efficiency Condensing Unit
- High-efficiency Furnace
- R-8/6 Silver Flex Duct in Attic
- Programmable Thermostats

#### Electrical:

- All Copper Wiring throughout the House
- GFI Safety Switches where Required by Codes
- 125 AMP Main Electric Panel
- All Other Electrical Wiring as per Floor Plans
- Recessed Can Lighting

#### Plumbing:

- CPVC Vents and Drain Pipes
- Insulated Exposed Water Lines
- (1) Water Heater
- Modern Chrome Plumbing Fixtures

#### Insulation:

Area:	Material:	R-Value:
Exterior Walls	Batt	R-13
Ceilings	Batt	R-38
Attic	Blown	R-8

#### Appliances:

- Dishwasher: Samsung
- Cooktop: Samsung
- Microwave: Samsung

CHOICE IS THE ULTIMATE LUXURY





# COLONIAL HEIGHTS

## COMMUNITY INFORMATION

### Katy Independent School District

#### Robert King Elementary School

1901 Charlton House Ln, Katy, TX 77493  
(281) 237-6850

#### Katy Junior High School

5350 Franz Rd, Katy, TX 77493  
(281) 237-6800

#### Morton Ranch High School

21000 Franz Rd, Katy, TX 77449  
(281) 237-7800

### Tax Information

**Total Tax Rate: 2.61% (2024)**

### HOA Information

**Management Company:** Beacon Residential Management

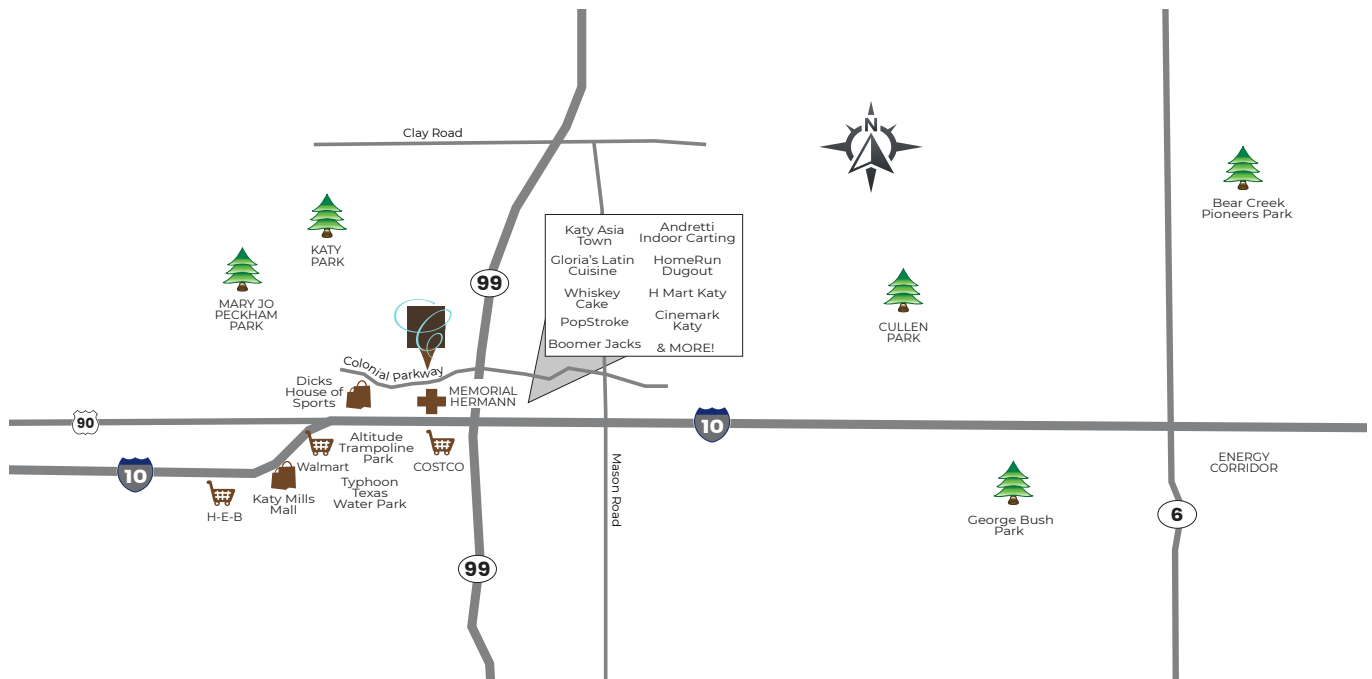
**Annual Dues:** \$1,100

**Capital Reserve Contribution:** \$1,155 (one-time payment)

Includes: Front yard maintenance, community area maintenance including the gate, private trash, and water.

### Points of Interest

- Katy Asiatown, H-E-B, Katy Mills Mall, Costco, and Memorial Hermann Katy Hospital all less than 10 minutes away
- Proximity to Grand Parkway (99) & I-10 for easy commuting



CHOICE IS THE ULTIMATE LUXURY